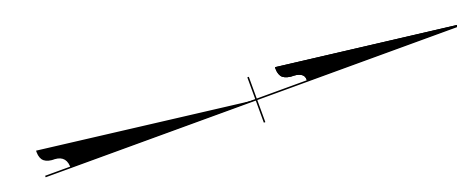


PLANS PREPARED FOR THE NCDOT BY:
M MOTT MACDONALD I & E, LLC
 1101 HAYNES STREET, SUITE 101
 RALEIGH, NC 27604
 NC LICENSE NO. F-0669



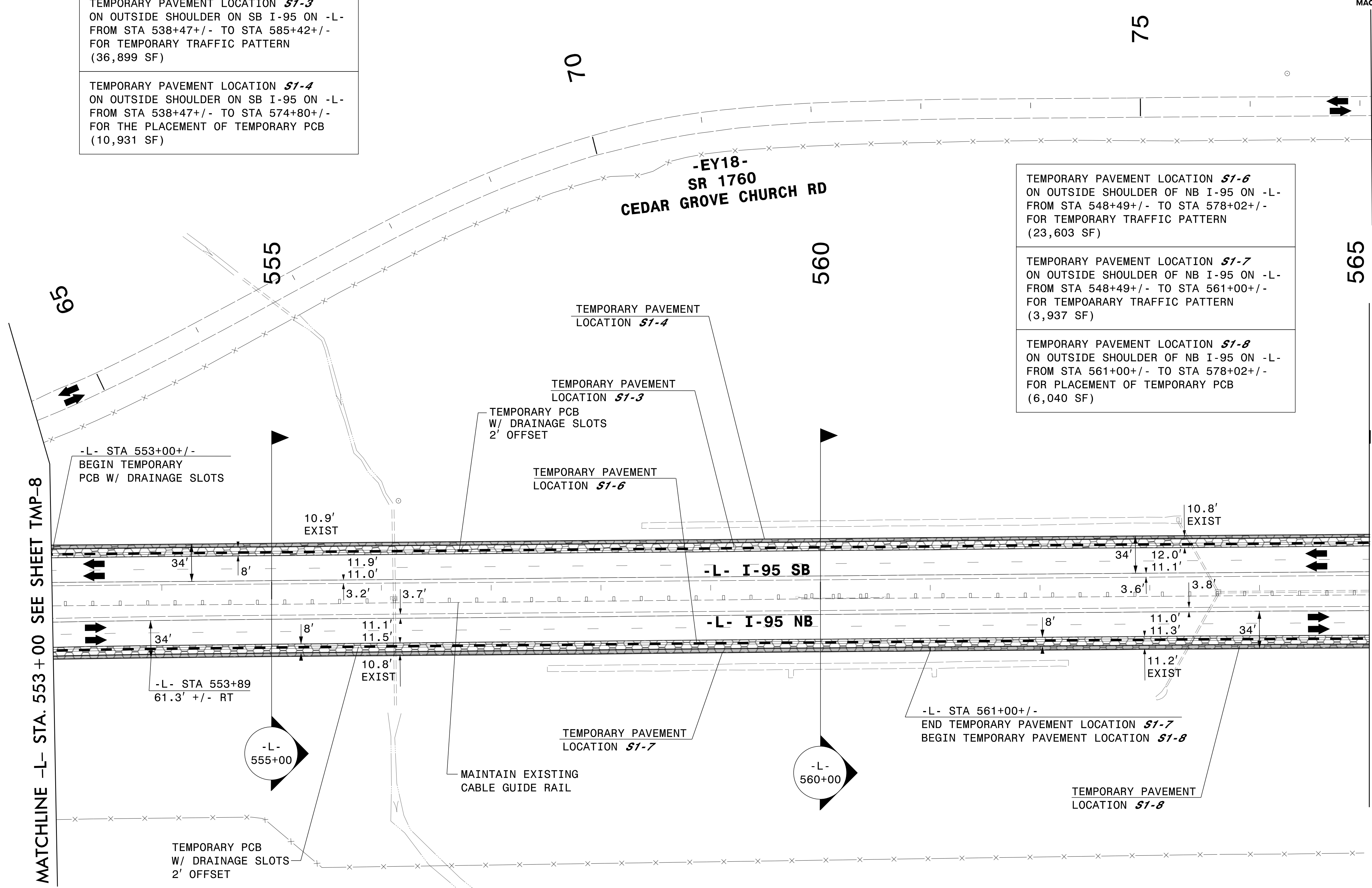
TEMPORARY PAVEMENT LOCATION **S1-3**
 ON OUTSIDE SHOULDER ON SB I-95 ON -L-
 FROM STA 538+47+/- TO STA 585+42+/-
 FOR TEMPORARY TRAFFIC PATTERN
 (36,899 SF)

TEMPORARY PAVEMENT LOCATION **S1-4**
 ON OUTSIDE SHOULDER ON SB I-95 ON -L-
 FROM STA 538+47+/- TO STA 574+80+/-
 FOR THE PLACEMENT OF TEMPORARY PCB
 (10,931 SF)

TEMPORARY PAVEMENT LOCATION **S1-6**
 ON OUTSIDE SHOULDER OF NB I-95 ON -L-
 FROM STA 548+49+/- TO STA 578+02+/-
 FOR TEMPORARY TRAFFIC PATTERN
 (23,603 SF)

TEMPORARY PAVEMENT LOCATION **S1-7**
 ON OUTSIDE SHOULDER OF NB I-95 ON -L-
 FROM STA 548+49+/- TO STA 561+00+/-
 FOR TEMPORARY TRAFFIC PATTERN
 (3,937 SF)

TEMPORARY PAVEMENT LOCATION **S1-8**
 ON OUTSIDE SHOULDER OF NB I-95 ON -L-
 FROM STA 561+00+/- TO STA 578+02+/-
 FOR PLACEMENT OF TEMPORARY PCB
 (6,040 SF)



MATCHLINE -L- STA. 553 + 00 SEE SHEET TMP-8

MATCHLINE -SR4- STA. 73 + 53.4 SEE SHEET TMP-18

MATCHLINE -L- STA. 565 + 00 SEE SHEET TMP-10

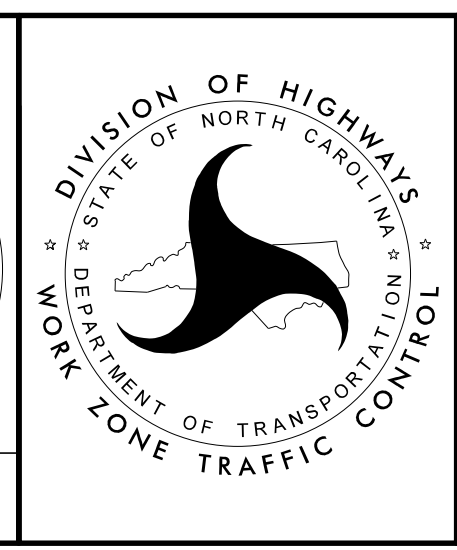
SEE SHEET TMP-9A FOR SECTIONS

DocuSigned by:
 APPROVED *Lori D. Stouchko*
 AF571AAAF6411

DATE: _____

SEAL
 034437
 ENGINEER
 LORI D. STOUCHKO

DOCUMENT NOT CONSIDERED FINAL
 UNLESS ALL SIGNATURES COMPLETED



SECTION 1

TEMPORARY TRAFFIC CONTROL
 PHASE I

3/28/2022
 G:\50100191\NV5_1-5987B\TrafficControl\Tcpl\200_III_1-5987B_TMP-9_Phase I.dgn
 User:ST086227