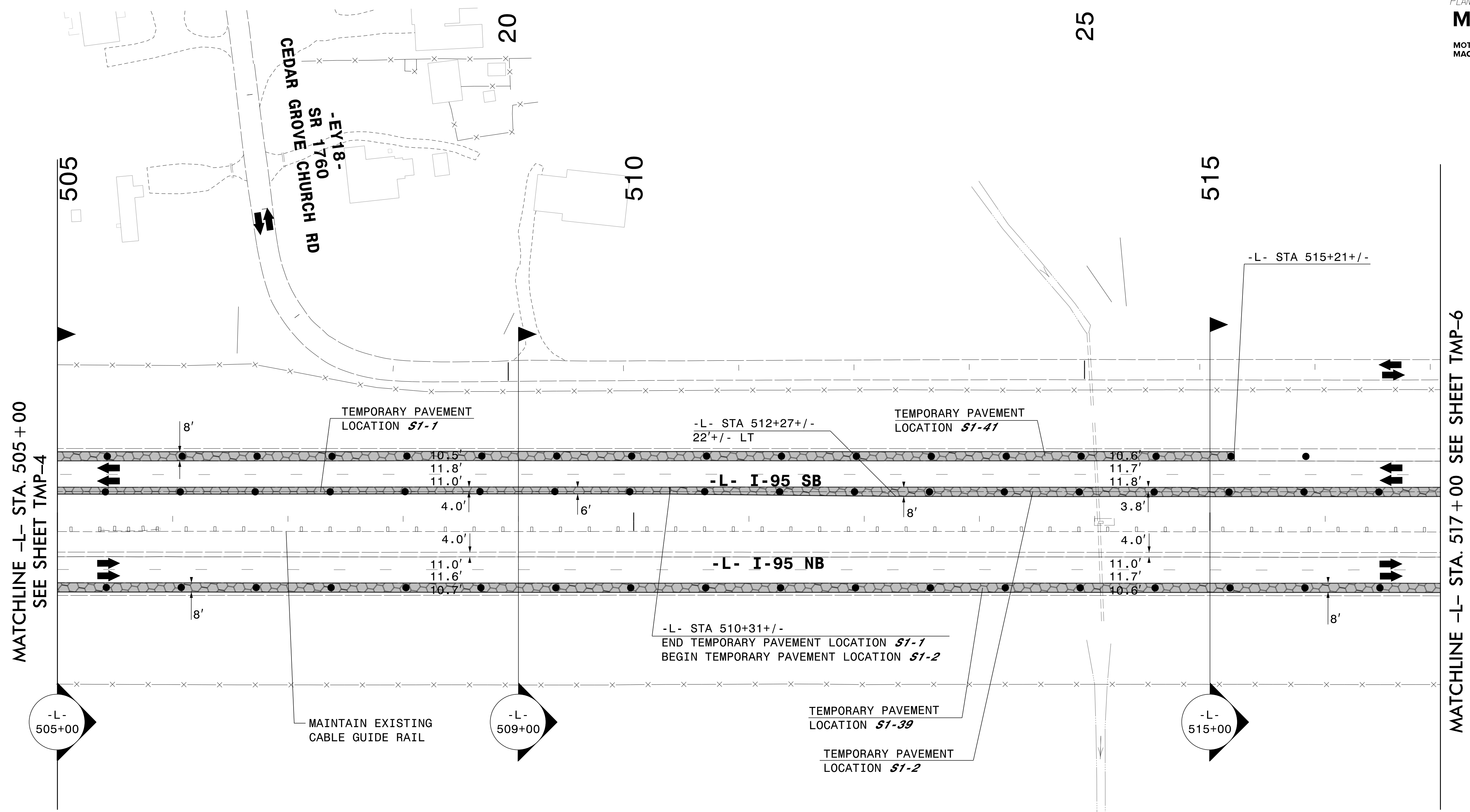


PLANS PREPARED FOR THE NCDOT BY:

M MOTT MACDONALD I & E, LLC
 1101 HAYNES STREET, SUITE 101
 RALEIGH, NC 27604
M MOTT MACDONALD NC LICENSE NO. F-0669



MATCHLINE -L- STA. 505+00
SEE SHEET TMP-4

MATCHLINE -L- STA. 517+00 SEE SHEET TMP-6

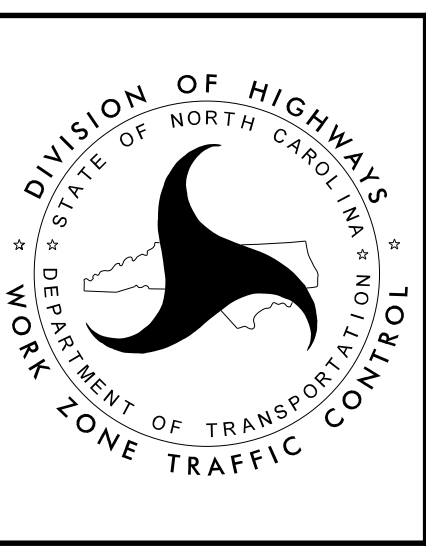
TEMPORARY PAVEMENT LOCATION S1-1 ON INSIDE SHOULDER OF SB I-95 ON -L- FROM STA 495+00+/- TO STA 510+31+/- FOR THE PLACEMENT OF TEMPORARY PCB (9,178 SF)	TEMPORARY PAVEMENT LOCATION S1-39 ON OUTSIDE SHOULDER OF NB I-95 ON -L- FROM STA 495+00+/- TO STA 548+49+/- FOR TEMPORARY TRAFFIC PATTERN (42,728 SF)
TEMPORARY PAVEMENT LOCATION S1-2 ON INSIDE SHOULDER OF SB I-95 ON -L- FROM STA 510+31+/- TO STA 542+95+/- FOR TEMPORARY TRAFFIC PATTERN (25,980 SF)	TEMPORARY PAVEMENT LOCATION S1-41 ON OUTSIDE SHOULDER OF SB I-95 ON -L- FROM STA 495+00+/- TO STA 515+21+/- FOR TEMPORARY TRAFFIC PATTERN (16,117 SF)

SEE SHEET TMP-5A
FOR SECTIONS

APPROVED: *Lori D. Stouchko*
AF571AAAF6411

DATE: _____

**DOCUMENT NOT CONSIDERED FINAL
UNLESS ALL SIGNATURES COMPLETED**



SECTION 1

**TEMPORARY TRAFFIC CONTROL
PHASE I**

3/28/2022
 G:\50100191\NV5_1-5987B\TrafficControl\Twp\200_097_1-5987B-TMP-5_Phase 1.dgn
 User:ST086227