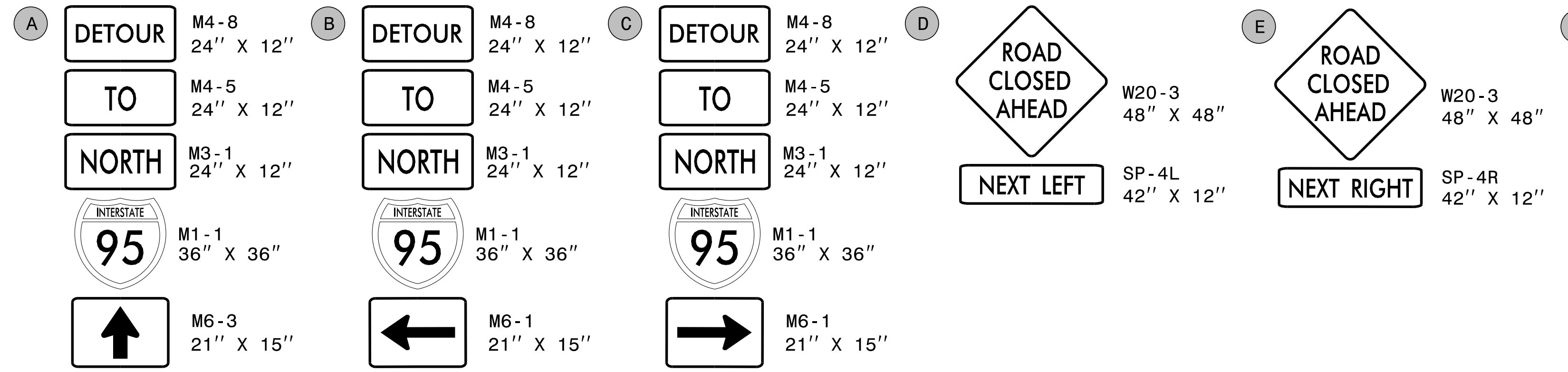
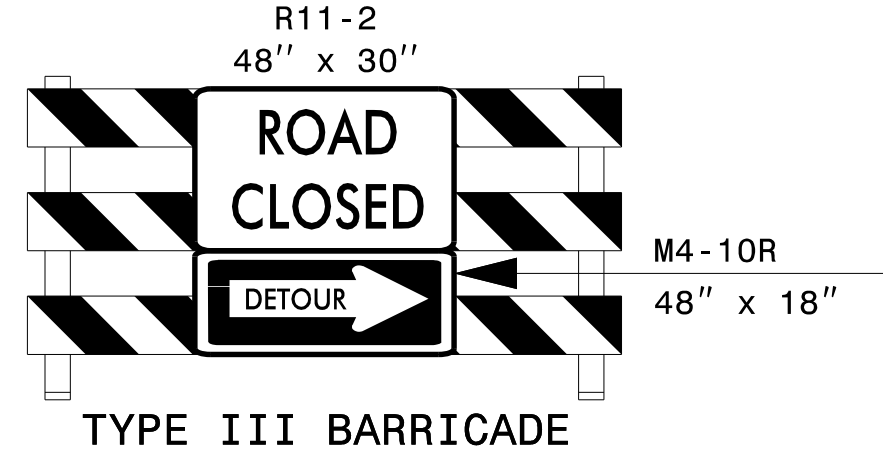


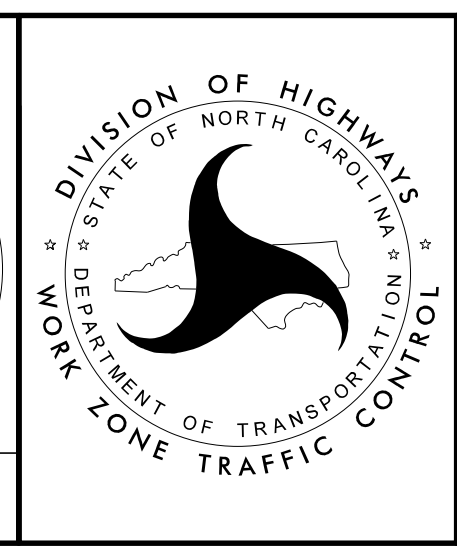
2	BEGINNING 10 DAYS PRIOR TO ROAD CLOSURE	MESSAGE NO. 1 I-95 N RAMP CLOSURE	MESSAGE NO. 2 (DAY) MNTH/DAY MIDNIGHT	BEGINNING AT AM THE DAY OF ROAD CLOSURE UNTIL MIDNIGHT	MESSAGE NO. 1 I-95 N RAMP CLOSURE	MESSAGE NO. 2 (DAY) MIDNIGHT
	BEGINNING 5 DAYS PRIOR TO ROAD CLOSURE	MESSAGE NO. 1 I-95 N RAMP CLOSURE	MESSAGE NO. 2 (DAY) AT MIDNIGHT	DURING ROAD CLOSURE	MESSAGE NO. 1 I-95 N RAMP CLOSED	MESSAGE NO. 2 FOLLOW DETOUR ROUTE



NOTE: CLOSE -Y5- RAMP D ONLY AS DIRECTED BY ENGINEER

APPROVED: *Lois D. Stouchko*  
DATE: 4/29/2022

DOCUMENT NOT CONSIDERED FINAL UNLESS ALL SIGNATURES COMPLETED



SECTION 1

DETOUR  
-Y5- RAMP D CLOSURE

3/15/2022 G:\50100191\NV5\_1-5987B\TrafficControl\Top\1-5987B\_TC\_TMP-02D10\_Y5\_Ramp\_D\_Detour.dgn User:ST086227