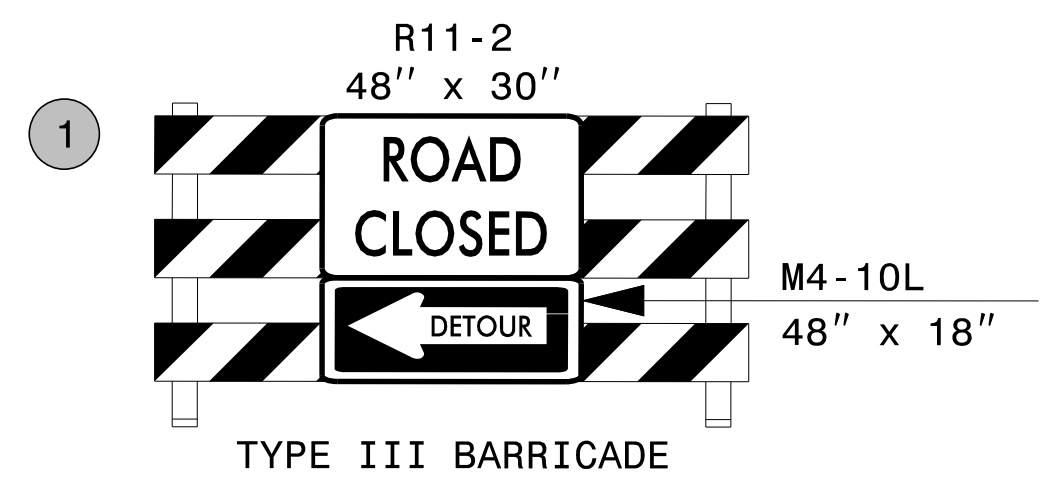


2	BEGINNING 10 DAYS PRIOR TO ROAD CLOSURE	MESSAGE NO. 1 I-95 S RAMP CLOSURE	MESSAGE NO. 2 (DAY) MNTH/DAY AT MIDNIGHT	BEGINNING AT AM THE DAY OF ROAD CLOSURE UNTIL MIDNIGHT	MESSAGE NO. 1 I-95 S RAMP CLOSURE	MESSAGE NO. 2 (DAY) AT MIDNIGHT
	BEGINNING 5 DAYS PRIOR TO ROAD CLOSURE	CHANGEABLE MESSAGE SIGN	CHANGEABLE MESSAGE SIGN	DURING ROAD CLOSURE	MESSAGE NO. 1 I-95 S RAMP CLOSED	MESSAGE NO. 2 FOLLOW DETOUR ROUTE

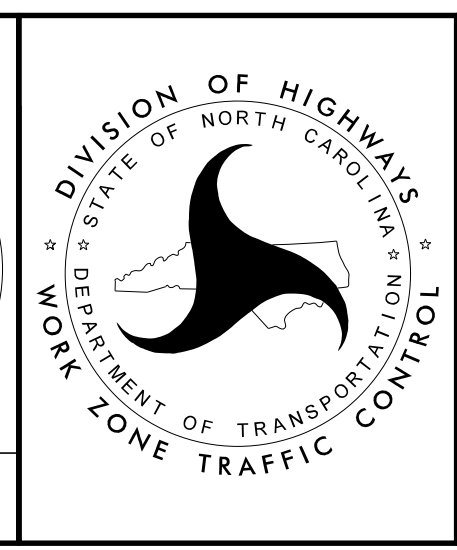


A	DETOUR M4-8 24" X 12"	B	DETOUR M4-8 24" X 12"	C	DETOUR M4-8 24" X 12"	D	ROAD CLOSED AHEAD W20-3 48" X 48"
	TO M4-5 24" X 12"		TO M4-5 24" X 12"		TO M4-5 24" X 12"		ROAD CLOSED AHEAD W20-3 48" X 48"
	SOUTH M3-3 24" X 12"		SOUTH M3-3 24" X 12"		SOUTH M3-3 24" X 12"		NEXT LEFT SP-4L 42" X 12"
	95 M1-1 36" X 36"		95 M1-1 36" X 36"		95 M1-1 36" X 36"		NEXT RIGHT SP-4R 42" X 12"
	↑ M6-3 21" X 15"		← M6-1 21" X 15"		→ M6-1 21" X 15"		

NOTE: CLOSE -Y5- RAMP B ONLY AS DIRECTED BY ENGINEER

APPROVED: *Lori D. Stouchko*
DATE: 4/29/2022

DOCUMENT NOT CONSIDERED FINAL UNLESS ALL SIGNATURES COMPLETED



SECTION 1

DETOUR
-Y5- RAMP B CLOSURE

3/15/2022
G:\50100191\NV5_1-5987B\TrafficControl\Top\I-5987B_Y5_Ramp_B_Detour.dgn
User:ST086227