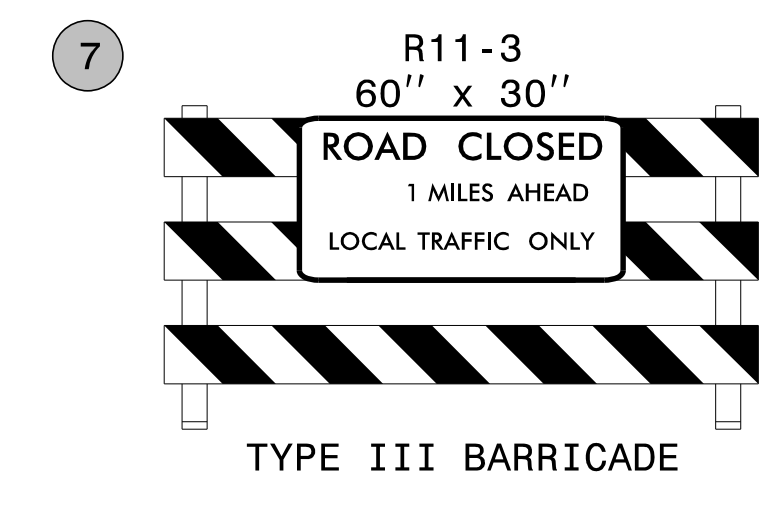
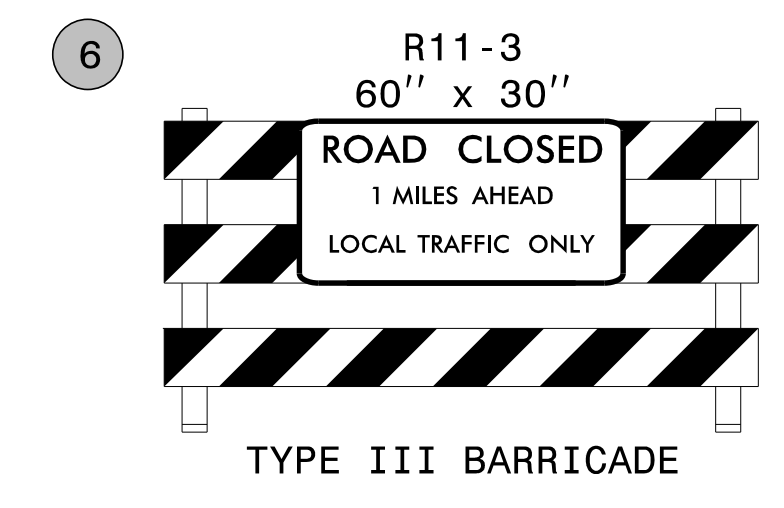
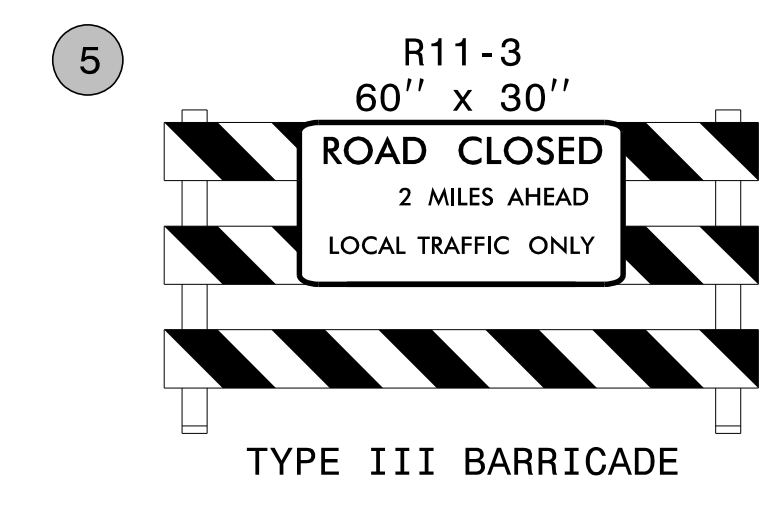
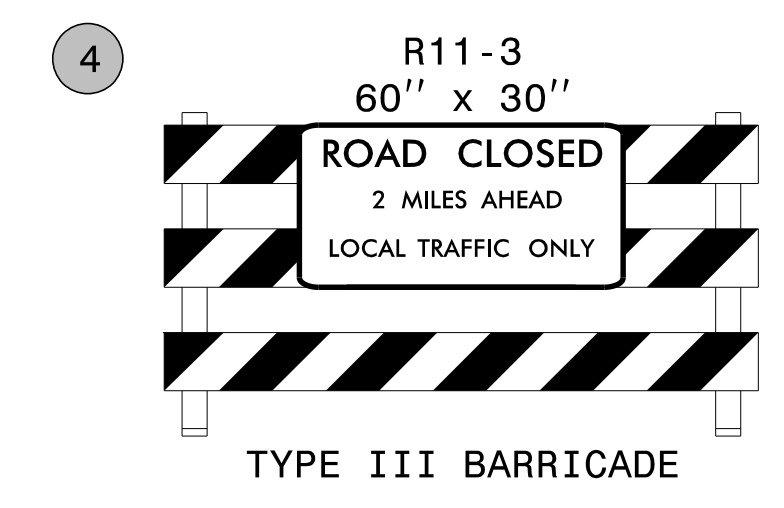
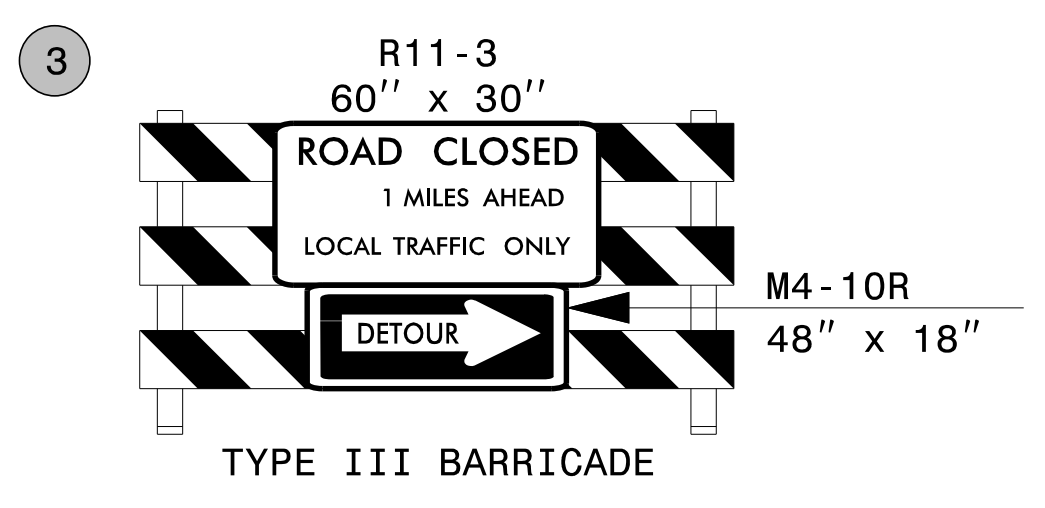
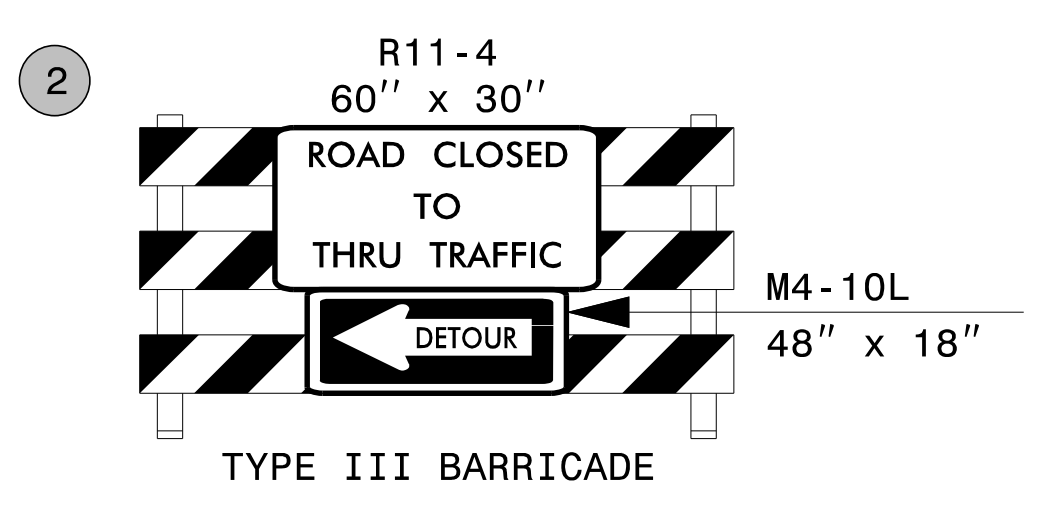
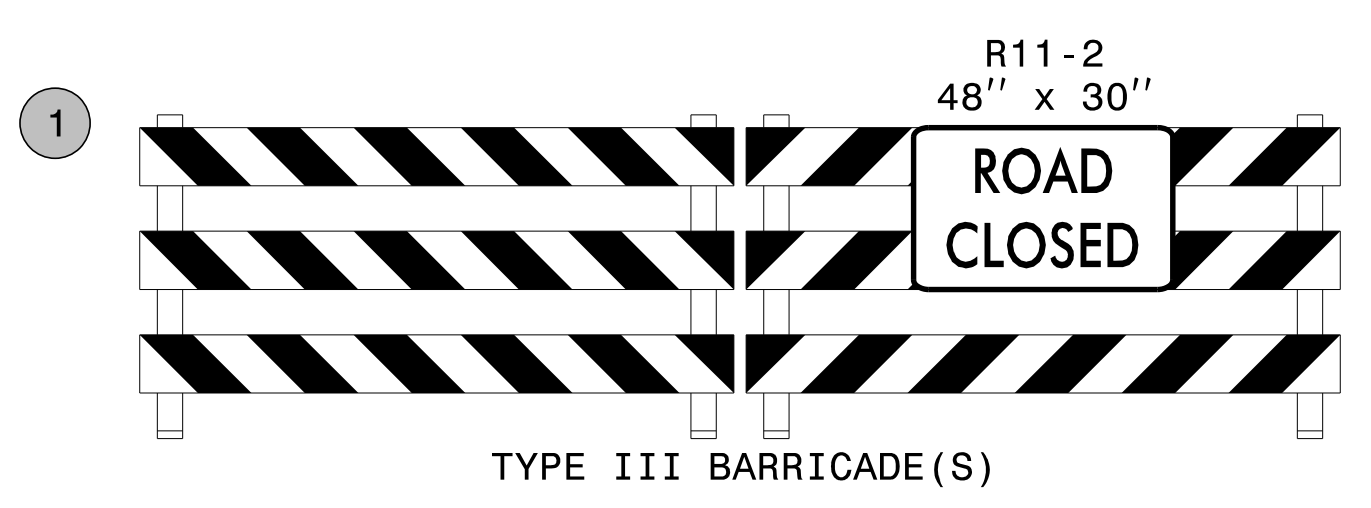
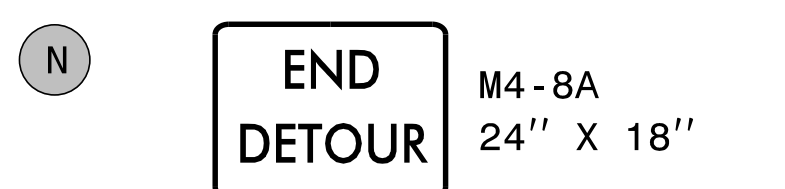
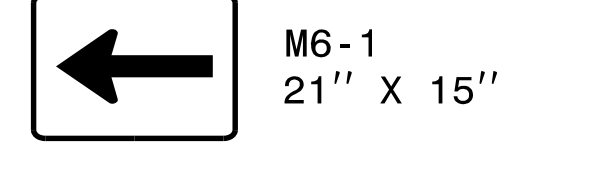
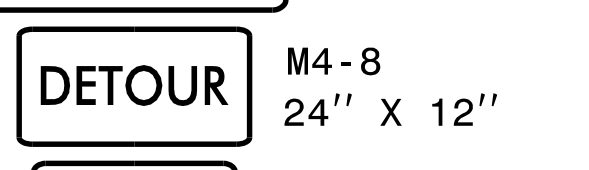
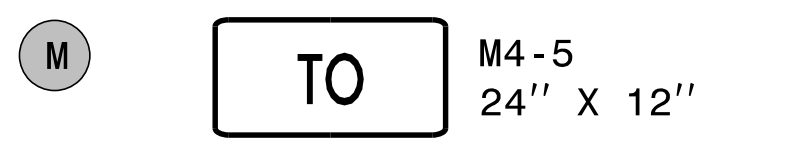
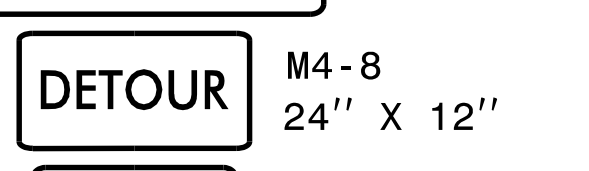
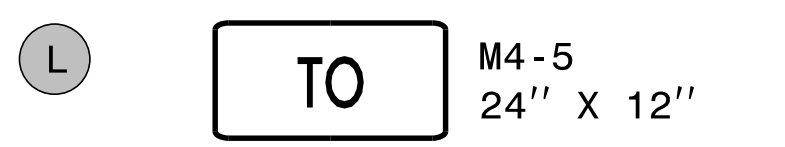
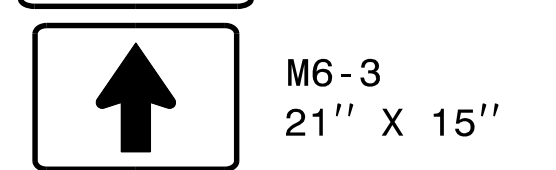
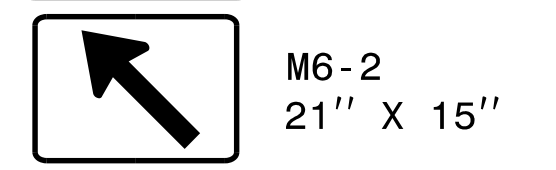
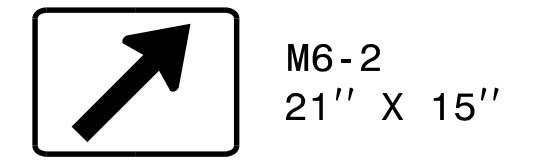
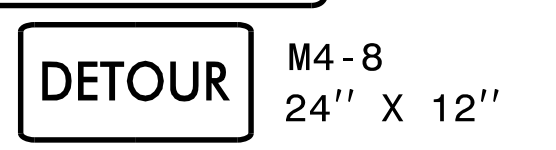
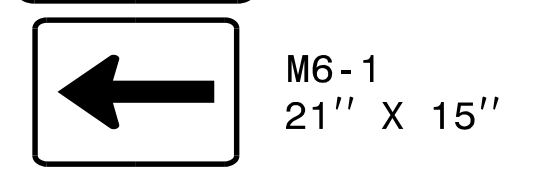
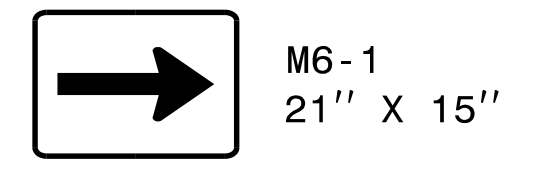
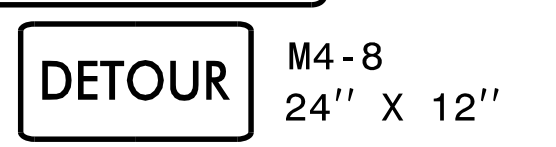
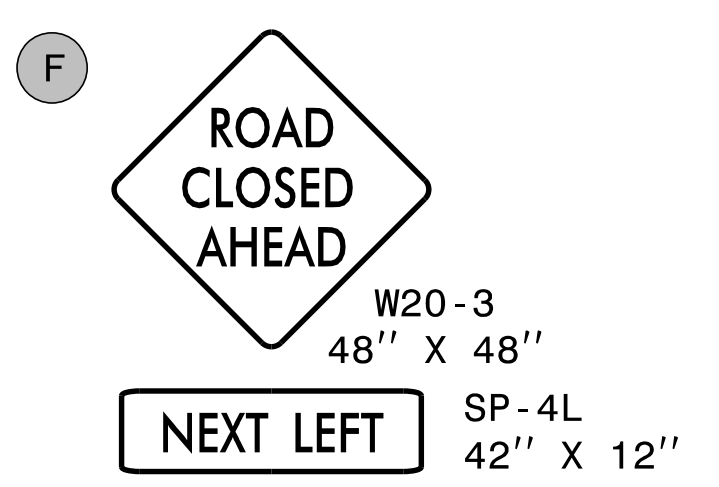
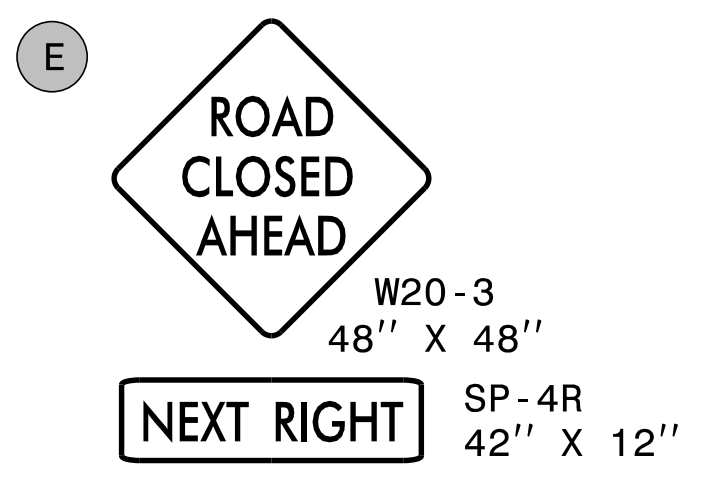
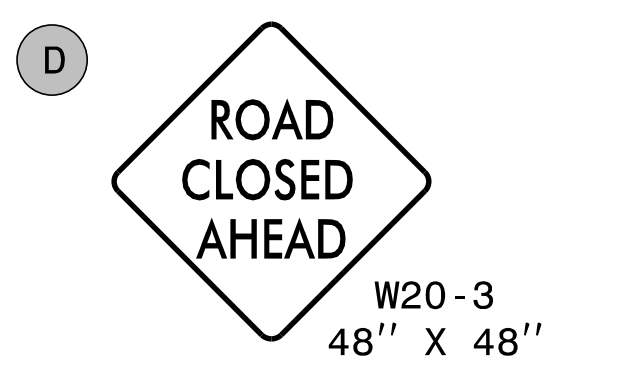
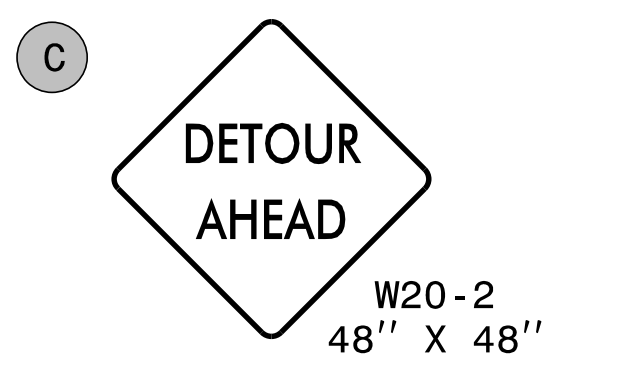
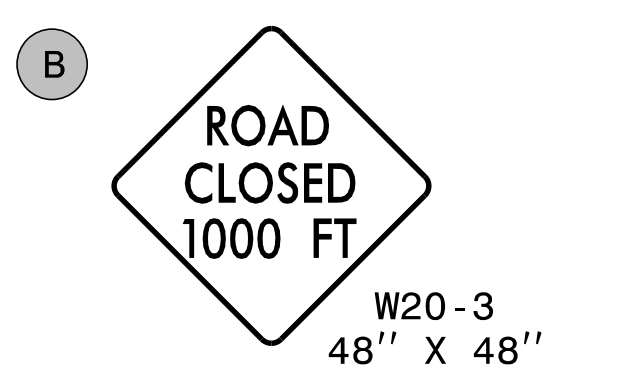
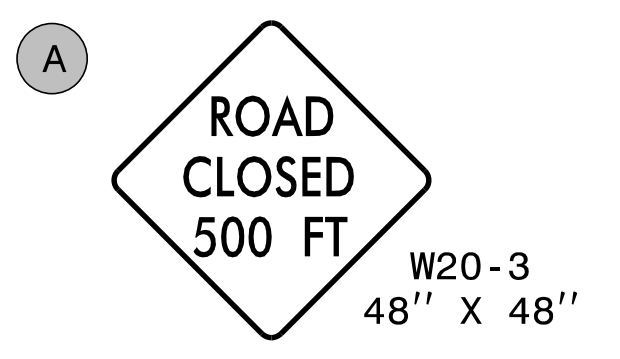


PLANS PREPARED FOR THE NCDOT BY:

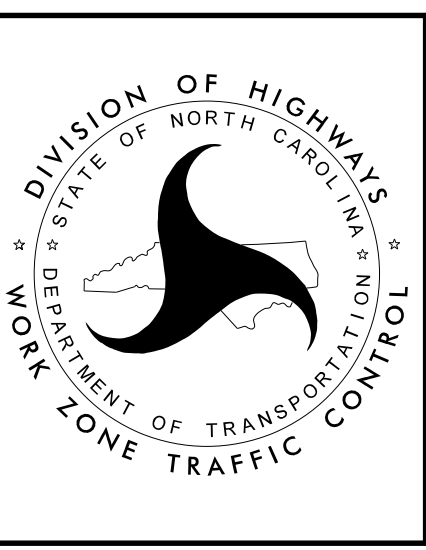
**M** MOTT MACDONALD I & E, LLC  
 1101 HAYNES STREET, SUITE 101  
 RALEIGH, NC 27604  
 NC LICENSE NO. F-0669



SEE SHEET TMP-2D6  
FOR DETOUR

APPROVED: *Lori D. Stouchko*  
 DATE: 4/29/2022

DOCUMENT NOT CONSIDERED FINAL  
UNLESS ALL SIGNATURES COMPLETED



SECTION 1

DETOUR  
-Y4- / -SR4- / -SR5-  
ROAD CLOSURES  
TEMPORARY TRAFFIC  
CONTROL DEVICES

3/15/2022  
 G:\50100191\NV5\_1-5987B\TrafficControl\Top\1-5987B\_TC\_TMP-02D06A\_Y4\_SR4\_SR5\_Detour\_Signs.dgn  
 User:ST086227