


PROJECT REFERENCE NO.	SHEET NO.
L-5987B	RW47
Location and Surveys	
JoynerKeeny, PLLC 1051 N. Winstead Avenue Rocky Mount, NC 27804 252-977-3124 North Carolina Firm Number P-0551	
PROJECT SURVEYOR	
	
DOCUMENT NOT CONSIDERED FINAL UNLESS ALL SIGNATURES COMPLETED	

I, Stephen R. Wolfe, certify that the right of way and permanent easement monumentation for this project shown herein was completed under my direct and responsible charge from an actual survey made under my supervision; that all horizontal closures had a minimum ratio of precision of 1:10,000 (Class A). Field work was performed from 12JUL2021 to 23AUG2021, and all coordinates are based on NAD83/2011; That this survey was performed to meet the requirements of 21NCAC 56.1600 as applicable.

This 23rd day of March, 2022.

DocuSigned by:

 3068875F3940448...
 Professional Land Surveyor L-3259

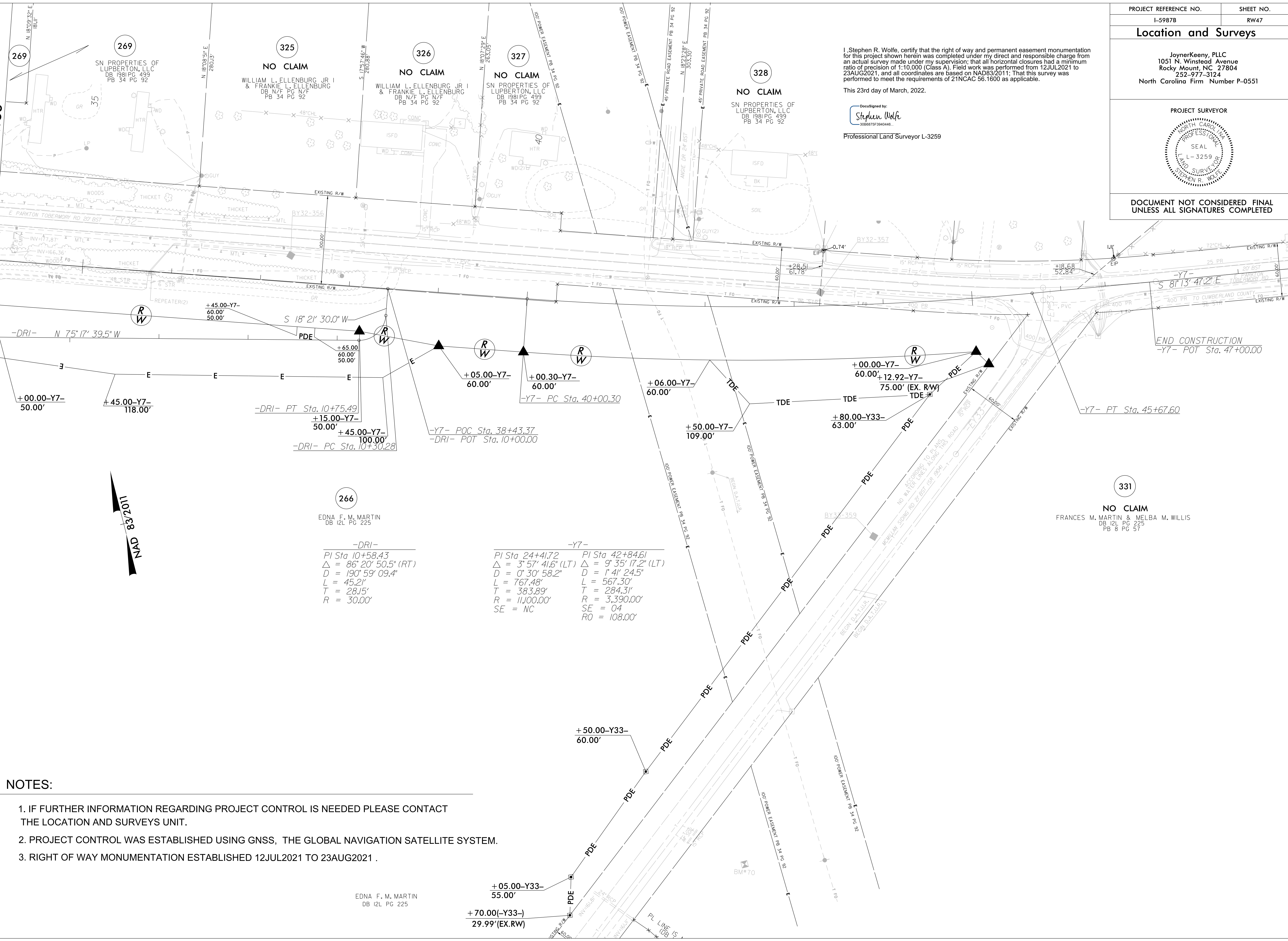
MATCHLINE -Y7- STA. 34+00.00 SEE SHEET NO. RW36

REVISIONS

25-MAR-2022 16:56 350_NCDOT_L-5987B_RW_SURVEY.DGN\WORK\RW\RW SERIES SHEETS\5987b_1s_rw47.dgn
 jmatthews AT JK-A-042

NOTES:

1. IF FURTHER INFORMATION REGARDING PROJECT CONTROL IS NEEDED PLEASE CONTACT THE LOCATION AND SURVEYS UNIT.
2. PROJECT CONTROL WAS ESTABLISHED USING GNSS, THE GLOBAL NAVIGATION SATELLITE SYSTEM.
3. RIGHT OF WAY MONUMENTATION ESTABLISHED 12JUL2021 TO 23AUG2021 .



266
 EDNA F. M. MARTIN
 DB 12L PG 225

-DRI-
 PI Sta 10+58.43
 $\Delta = 86^\circ 20' 50.5''$ (RT)
 $D = 190' 59' 09.4''$
 $L = 45.21'$
 $T = 28.15'$
 $R = 30.00'$

-Y7-
 PI Sta 24+41.72
 $\Delta = 3^\circ 57' 41.6''$ (LT)
 $D = 0' 30' 58.2''$
 $L = 767.48'$
 $T = 383.89'$
 $R = 11,100.00'$
 $SE = NC$

PI Sta 42+84.61
 $\Delta = 9^\circ 35' 17.2''$ (LT)
 $D = 1' 41' 24.5''$
 $L = 567.30'$
 $T = 284.31'$
 $R = 3,390.00'$
 $SE = 04$
 $RO = 108.00'$

EDNA F. M. MARTIN
 DB 12L PG 225

+70.00(-Y33-)
 29.99'(EX.RW)

+50.00-Y33-
 60.00'

+00.00-Y7-
 60.00'
 +12.92-Y7-
 75.00' (EX. R/W)
 TDE

+80.00-Y33-
 63.00'

+50.00-Y7-
 109.00'

+00.30-Y7-
 60.00'

+05.00-Y7-
 60.00'

S 18° 21' 30.0" W
 PDE

+45.00-Y7-
 118.00'

+00.00-Y7-
 50.00'

331
 NO CLAIM
 FRANCES M. MARTIN & MELBA M. WILLIS
 DB 12L PG 225
 PB 8 PG 57

END CONSTRUCTION
 -Y7- POT Sta. 47+00.00

-Y7- PT Sta. 45+67.60

S 81° 13' 47.2" E

BM#70