


NOTES:

- 1. IF FURTHER INFORMATION REGARDING PROJECT CONTROL IS NEEDED PLEASE CONTACT THE LOCATION AND SURVEYS UNIT.
- 2. PROJECT CONTROL WAS ESTABLISHED USING GNSS, THE GLOBAL NAVIGATION SATELLITE SYSTEM.
- 3. RIGHT OF WAY MONUMENTATION ESTABLISHED 12JUL2021 TO 04JAN2022.

PROJECT REFERENCE NO. I-5987B	SHEET NO. RW40
<b>Location and Surveys</b>	
JoynerKeeny, PLLC 1051 N. Winstead Avenue Rocky Mount, NC 27804 252-977-3124 North Carolina Firm Number P-0551	
PROJECT SURVEYOR	
	
DOCUMENT NOT CONSIDERED FINAL UNLESS ALL SIGNATURES COMPLETED	

I, Stephen R. Wolfe, certify that the right of way and permanent easement monumentation for this project shown herein was completed under my direct and responsible charge from an actual survey made under my supervision, that all horizontal closures had a minimum ratio of precision of 1:10,000 (Class A). Field work was performed from 12JUL2021 to 04JAN2022, and all coordinates are based on NAD83/2011; That this survey was performed to meet the requirements of 21NCAC 56.1600 as applicable.

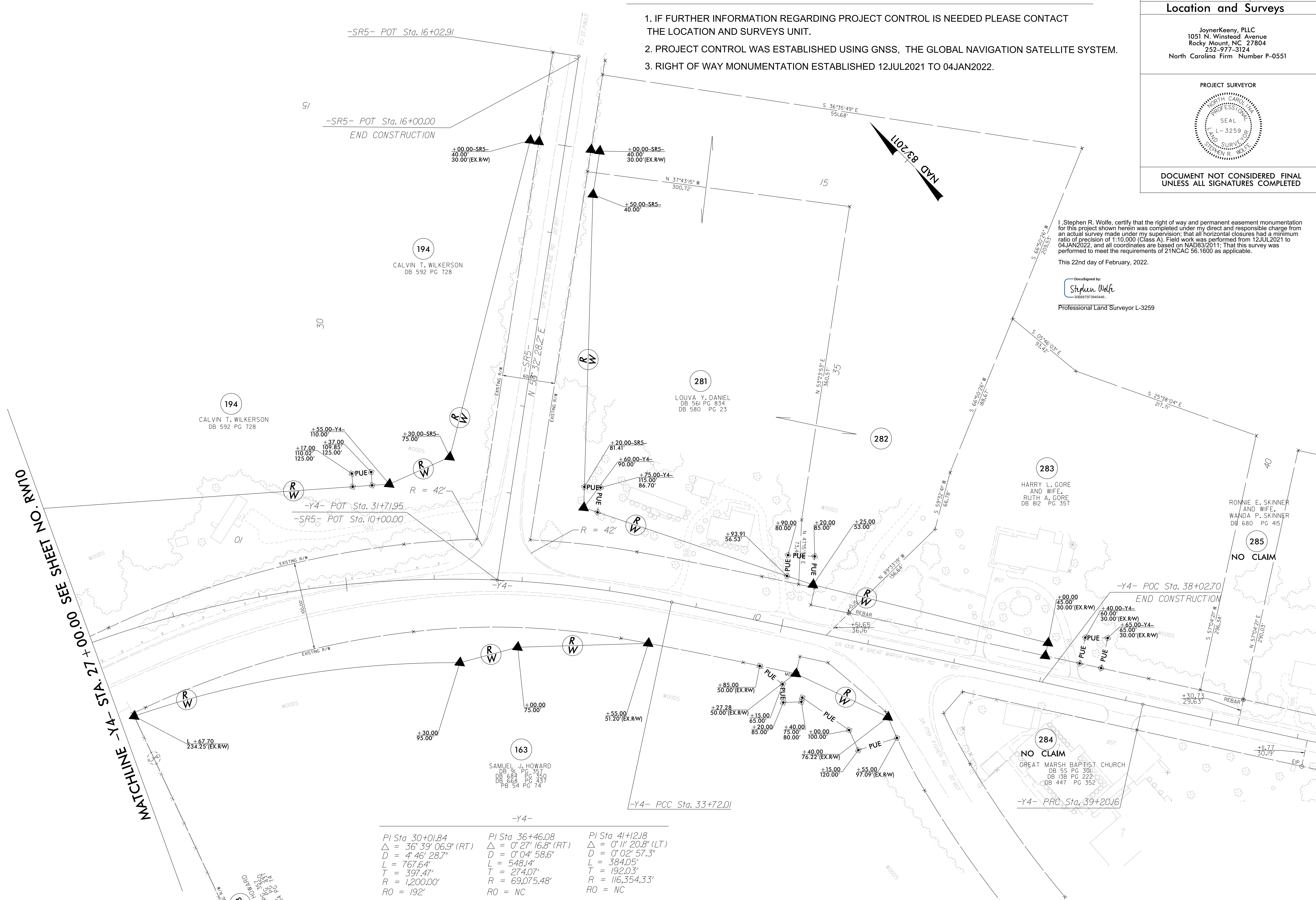
This 22nd day of February, 2022.

DocuSigned by:  
  
 3026675F39404446  
 Professional Land Surveyor L-3259

REVISIONS

MATCHLINE - Y4 - STA. 27+00.00 SEE SHEET NO. RW10

22-FEB-2022 15:20:35D INCDOT\_I5987B\_RW\_SURVEY.DGN WORK\RM\RW SERIES SHEETS 220214\I5987B\I5987B\I5987B.dgn  
 25-FEB-2019 15:20:35D INCDOT\_I5987B\_RW\_SURVEY.DGN WORK\RM\RW SERIES SHEETS 220214\I5987B\I5987B\I5987B.dgn  
 jmatthews AT JK-A-042



PI Sta 30+01.84 Δ = 36° 39' 06.9" (RT) D = 4' 46" 28.7" L = 767.64' T = 397.47' R = 1,200.00' RO = 192'	PI Sta 36+46.08 Δ = 0° 27' 16.8" (RT) D = 0' 04" 58.6" L = 548.14' T = 274.07' R = 69,075.48' RO = NC	PI Sta 41+21.8 Δ = 0° 11' 20.8" (LT) D = 0' 02" 57.3" L = 384.05' T = 192.03' R = 116,354.33' RO = NC
---	---	---