


NAD 83/2011

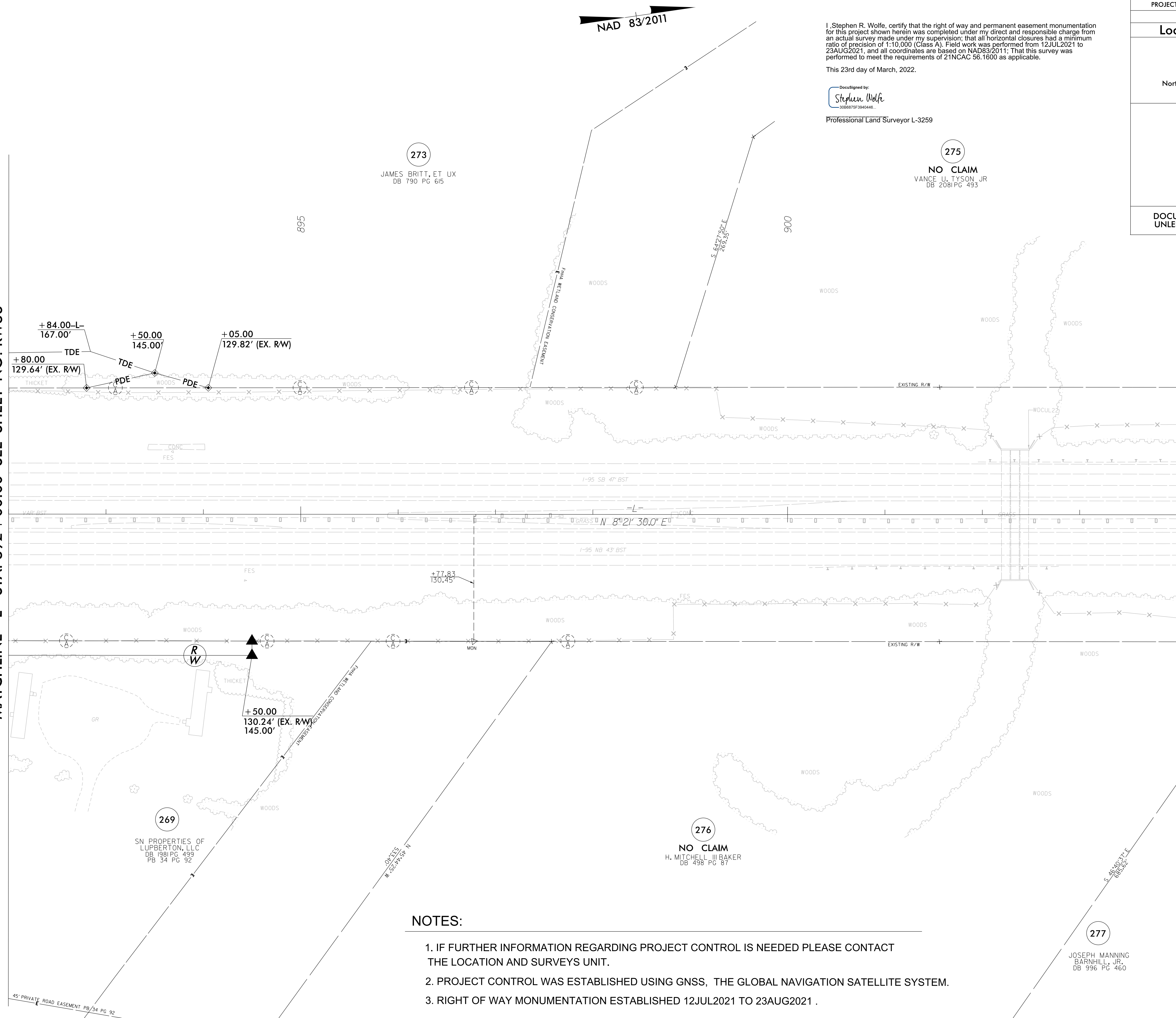
I, Stephen R. Wolfe, certify that the right of way and permanent easement monumentation for this project shown herein was completed under my direct and responsible charge from an actual survey made under my supervision; that all horizontal closures had a minimum ratio of precision of 1:10,000 (Class A). Field work was performed from 12JUL2021 to 23AUG2021, and all coordinates are based on NAD83/2011. That this survey was performed to meet the requirements of 21NCAC 56.1600 as applicable.
This 23rd day of March, 2022.

DocuSigned by:
Stephen Wolfe
-3068875F394044E...
Professional Land Surveyor L-3259

PROJECT REFERENCE NO.	SHEET NO.
L-5987B	RW37
Location and Surveys	
JoynerKeeny, PLLC 1051 N. Winstead Avenue Rocky Mount, NC 27804 252-977-3124 North Carolina Firm Number P-0551	
PROJECT SURVEYOR	
	
DOCUMENT NOT CONSIDERED FINAL UNLESS ALL SIGNATURES COMPLETED	

MATCHLINE -L- STA. 892 + 00.00 SEE SHEET NO. RW36

MATCHLINE -L- STA. 904 + 00 SEE SHEET NO. RW38



NOTES:

1. IF FURTHER INFORMATION REGARDING PROJECT CONTROL IS NEEDED PLEASE CONTACT THE LOCATION AND SURVEYS UNIT.
2. PROJECT CONTROL WAS ESTABLISHED USING GNSS, THE GLOBAL NAVIGATION SATELLITE SYSTEM.
3. RIGHT OF WAY MONUMENTATION ESTABLISHED 12JUL2021 TO 23AUG2021 .

REVISIONS

23 MAR 2022 15:51 1600350 NCDOT_L-5987B_RW_SURVEY.DGN\WORK\RW\RW SERIES SHEETS\5987b_1s_rw37.dgn
23 MAR 2019 16:00 1600350 NCDOT_L-5987B_RW_SURVEY.DGN\WORK\RW\RW SERIES SHEETS\5987b_1s_rw37.dgn
jmatthews AT JKA-042

45' PRIVATE ROAD EASEMENT PB/14 PG 92

277
JOSEPH MANNING
BARNHILL, JR.
DB 996 PG 460