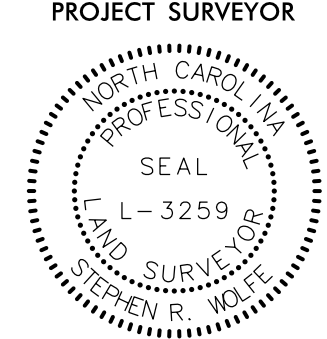
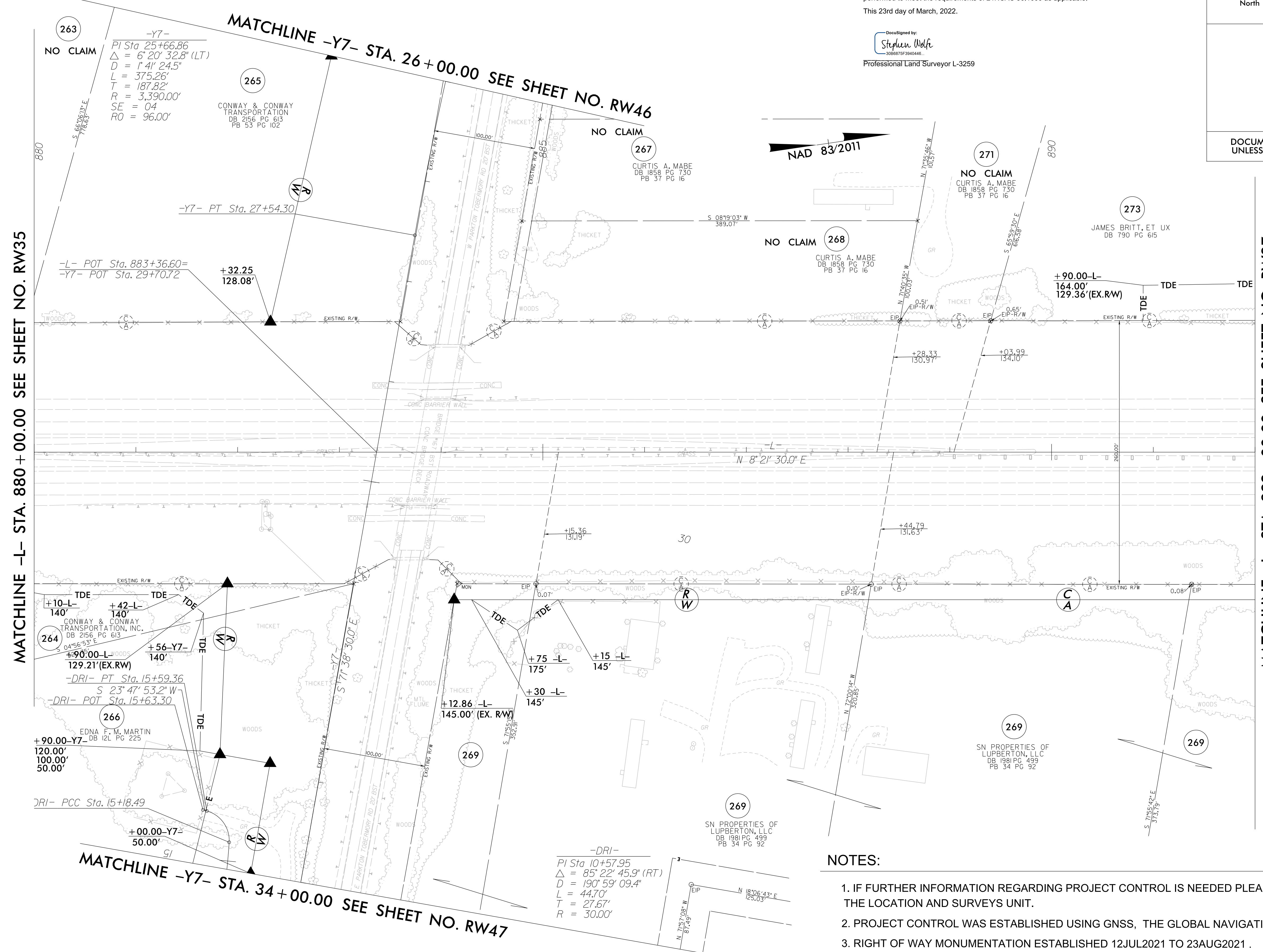


PROJECT REFERENCE NO.	SHEET NO.
L-5987B	RW36
Location and Surveys	
JoynerKeeny, PLLC 1051 N. Winstead Avenue Rocky Mount, NC 27804 252-977-3124 North Carolina Firm Number P-0551	
PROJECT SURVEYOR	
	
DOCUMENT NOT CONSIDERED FINAL UNLESS ALL SIGNATURES COMPLETED	

I, Stephen R. Wolfe, certify that the right of way and permanent easement monumentation for this project shown herein was completed under my direct and responsible charge from an actual survey made under my supervision; that all horizontal closures had a minimum ratio of precision of 1:10,000 (Class A). Field work was performed from 12 JUL 2021 to 23 AUG 2021, and all coordinates are based on NAD83/2011; That this survey was performed to meet the requirements of 21NCAC 56.1600 as applicable.

This 23rd day of March, 2022.

DocuSigned by:
Stephen Wolfe
 3068875F3840446...
 Professional Land Surveyor L-3259



MATCHLINE -L- STA. 880 + 00.00 SEE SHEET NO. RW35

MATCHLINE -L- STA. 892 + 00.00 SEE SHEET NO. RW37

MATCHLINE -Y7- STA. 34+00.00 SEE SHEET NO. RW47

MATCHLINE -Y7- STA. 26+00.00 SEE SHEET NO. RW46

NOTES:

1. IF FURTHER INFORMATION REGARDING PROJECT CONTROL IS NEEDED PLEASE CONTACT THE LOCATION AND SURVEYS UNIT.
2. PROJECT CONTROL WAS ESTABLISHED USING GNSS, THE GLOBAL NAVIGATION SATELLITE SYSTEM.
3. RIGHT OF WAY MONUMENTATION ESTABLISHED 12JUL2021 TO 23AUG2021 .

REVISIONS

23-MAR-2022 10:00:35D_NCDOT_L-5987B_RW_SURVEY.DGN\WORK\RW\RW SERIES SHEETS\15987b_1s_rw_36.dgn
 jmatthews AT JKA-042