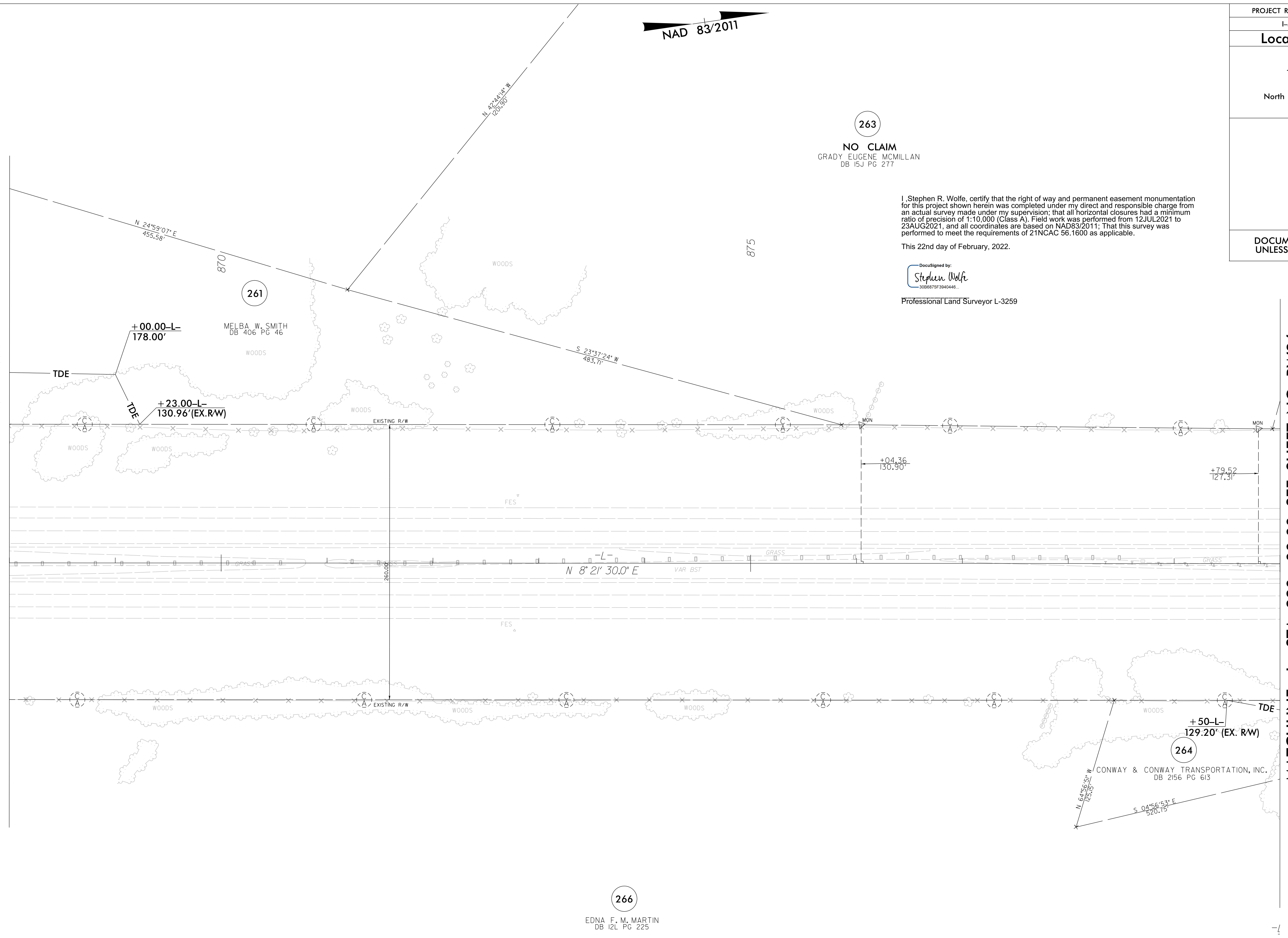


REVISIONS

22-FEB-2022 15:05  
25-FEB-2022 15:05  
15-FEB-2021 15:05  
jmatthews AT jk4-042

MATCHLINE -L- STA. 868 + 00.00 SEE SHEET NO. RW34

MATCHLINE -L- STA. 880 + 00.00 SEE SHEET NO. RW36



NAD 83/2011

263

**NO CLAIM**  
GRADY EUGENE MCMILLAN  
DB 15J PG 277

I, Stephen R. Wolfe, certify that the right of way and permanent easement monumentation for this project shown herein was completed under my direct and responsible charge from an actual survey made under my supervision; that all horizontal closures had a minimum ratio of precision of 1:10,000 (Class A). Field work was performed from 12JUL2021 to 23AUG2021, and all coordinates are based on NAD83/2011; That this survey was performed to meet the requirements of 21NCAC 56.1600 as applicable.

This 22nd day of February, 2022.

DocuSigned by:  
*Stephen Wolfe*  
3066875F3840448

Professional Land Surveyor L-3259



DOCUMENT NOT CONSIDERED FINAL  
UNLESS ALL SIGNATURES COMPLETED

266

EDNA F. M. MARTIN  
DB 12L PG 225

**NOTES:**

1. IF FURTHER INFORMATION REGARDING PROJECT CONTROL IS NEEDED PLEASE CONTACT THE LOCATION AND SURVEYS UNIT.
2. PROJECT CONTROL WAS ESTABLISHED USING GNSS, THE GLOBAL NAVIGATION SATELLITE SYSTEM.
3. RIGHT OF WAY MONUMENTATION ESTABLISHED 12JUL2021 TO 23AUG2021 .