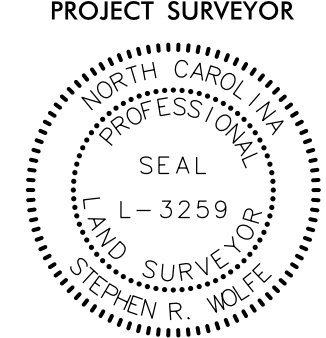


6/2/19

ETLAND CONSERVATION EASEMENT TRACT (3C3) PER DB 701 PG 285-290

NAD 83/2011

PROJECT REFERENCE NO.	SHEET NO.
L-5987B	RW32
Location and Surveys	
JoynerKeeny, PLLC 1051 N. Winstead Avenue Rocky Mount, NC 27804 252-977-3124 North Carolina Firm Number P-0551	
PROJECT SURVEYOR	
	
DOCUMENT NOT CONSIDERED FINAL UNLESS ALL SIGNATURES COMPLETED	

259

FREEHOLD PROPERTIES INC
DB 1379 PG 790

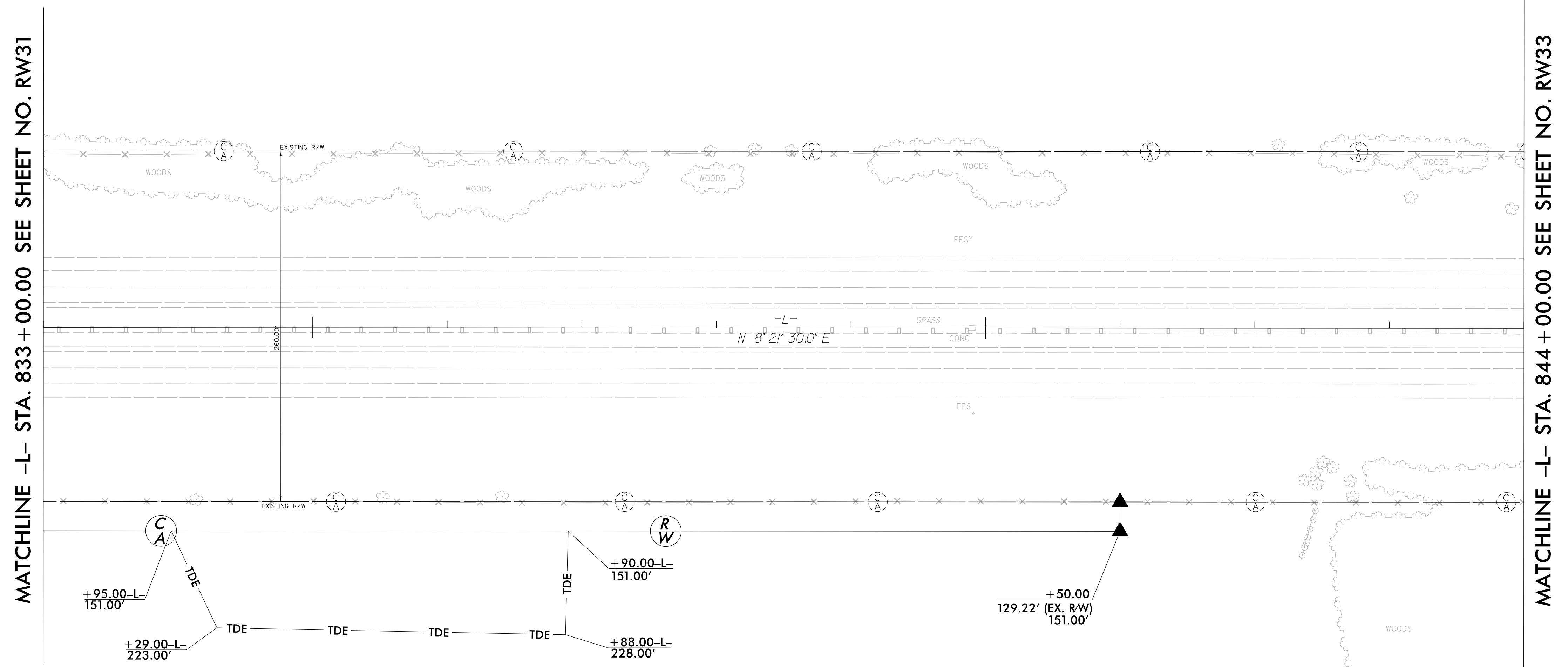
I, Stephen R. Wolfe, certify that the right of way and permanent easement monumentation for this project shown herein was completed under my direct and responsible charge from an actual survey made under my supervision; that all horizontal closures had a minimum ratio of precision of 1:10,000 (Class A). Field work was performed from 12JUL2021 to 23AUG2021, and all coordinates are based on NAD83/2011; That this survey was performed to meet the requirements of 21NCAC 58.1600 as applicable.
This 22nd day of February, 2022.

DocuSigned by:
Stephen Wolfe
3026875F3840448
Professional Land Surveyor L-3259

835

840

REVISIONS



MATCHLINE -L- STA. 833 + 00.00 SEE SHEET NO. RW31

MATCHLINE -L- STA. 844 + 00.00 SEE SHEET NO. RW33

258

JAMES BRITT & RUTH
DB 710 PG 196

NOTES:

1. IF FURTHER INFORMATION REGARDING PROJECT CONTROL IS NEEDED PLEASE CONTACT THE LOCATION AND SURVEYS UNIT.
2. PROJECT CONTROL WAS ESTABLISHED USING GNSS, THE GLOBAL NAVIGATION SATELLITE SYSTEM.
3. RIGHT OF WAY MONUMENTATION ESTABLISHED 12JUL2021 TO 23AUG2021 .

22-FEB-2022 15:54
25-FEB-2022 15:54
25-FEB-2022 15:54
jmatthews AT JKA-042
C:\FAB\2019\15000350_NCDOT_L-5987B_RW_SURVEY\DDGN\WORK\RM\RW SERIES SHEETS_220214\15987b.lis.rw32.dgn