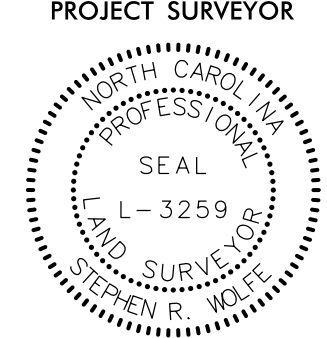


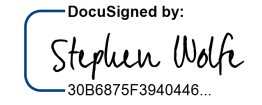
REVISIONS

NAD 83/2011

PROJECT REFERENCE NO.	SHEET NO.
I-5987B	RW29
<b>Location and Surveys</b>	
JoynerKeeny, PLLC 1051 N. Winstead Avenue Rocky Mount, NC 27804 252-977-3124 North Carolina Firm Number P-0551	
PROJECT SURVEYOR	
	
DOCUMENT NOT CONSIDERED FINAL UNLESS ALL SIGNATURES COMPLETED	

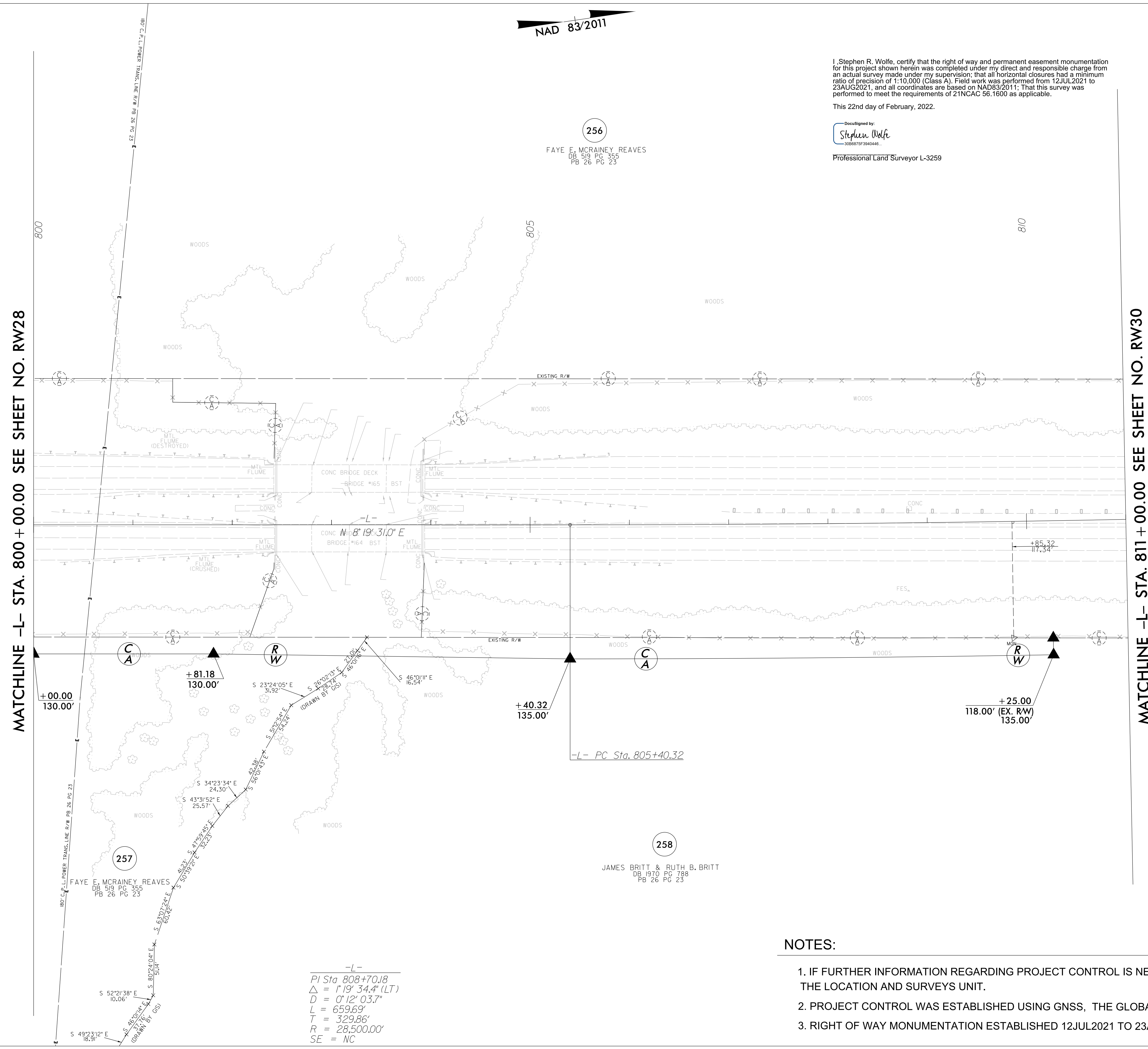
I, Stephen R. Wolfe, certify that the right of way and permanent easement monumentation for this project shown herein was completed under my direct and responsible charge from an actual survey made under my supervision, that all horizontal closures had a minimum ratio of precision of 1:10,000 (Class A). Field work was performed from 12JUL2021 to 23AUG2021, and all coordinates are based on NAD83/2011; That this survey was performed to meet the requirements of 21NCAC 56.1600 as applicable.

This 22nd day of February, 2022.

DocuSigned by:  
  
 Professional Land Surveyor L-3259

256  
 FAYE E. MCRAINEY REAVES  
 DB 5/9 PG 355  
 PB 26 PG 23

258  
 JAMES BRITT & RUTH B. BRITT  
 DB 1970 PG 788  
 PB 26 PG 23



MATCHLINE -L- STA. 800 + 00.00 SEE SHEET NO. RW28

MATCHLINE -L- STA. 811 + 00.00 SEE SHEET NO. RW30

+00.00  
130.00'

+81.18  
130.00'

+40.32  
135.00'

+25.00  
118.00' (EX. RW)  
135.00'

-L- PC Sta. 805+40.32

-L-  
 PI Sta 808+70.18  
 $\Delta = 1' 19" 34.4" (LT)$   
 $D = 0' 12" 03.7"$   
 $L = 659.69'$   
 $T = 329.86'$   
 $R = 28,500.00'$   
 SE = NC

**NOTES:**

1. IF FURTHER INFORMATION REGARDING PROJECT CONTROL IS NEEDED PLEASE CONTACT THE LOCATION AND SURVEYS UNIT.
2. PROJECT CONTROL WAS ESTABLISHED USING GNSS, THE GLOBAL NAVIGATION SATELLITE SYSTEM.
3. RIGHT OF WAY MONUMENTATION ESTABLISHED 12JUL2021 TO 23AUG2021 .