

NOTES:

- 1. IF FURTHER INFORMATION REGARDING PROJECT CONTROL IS NEEDED PLEASE CONTACT THE LOCATION AND SURVEYS UNIT.
- 2. PROJECT CONTROL WAS ESTABLISHED USING GNSS, THE GLOBAL NAVIGATION SATELLITE SYSTEM.
- 3. RIGHT OF WAY MONUMENTATION ESTABLISHED 12JUL2021 TO 23AUG2021 .

FAYE E. MCRAINEY REAVES
DB 519 PG 355
PB 26 PG 23

(252)

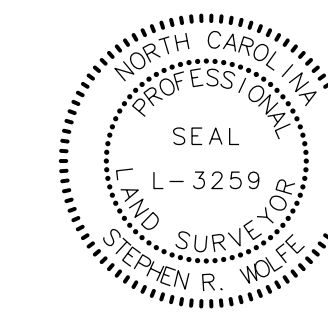


PROJECT REFERENCE NO.	SHEET NO.
I-5987B	RW24

Location and Surveys

JoynerKeeny, PLLC
1051 N. Winstead Avenue
Rocky Mount, NC 27804
252-977-3124
North Carolina Firm Number P-0551

PROJECT SURVEYOR



DOCUMENT NOT CONSIDERED FINAL
UNLESS ALL SIGNATURES COMPLETED

I, Stephen R. Wolfe, certify that the right of way and permanent easement monumentation for this project shown herein was completed under my direct and responsible charge from an actual survey made under my supervision; that all horizontal closures had a minimum ratio of precision of 1:10,000 (Class A). Field work was performed from 12JUL2021 to 23AUG2021, and all coordinates are based on NAD83/2011; That this survey was performed to meet the requirements of 21NCAC 56.1600 as applicable.

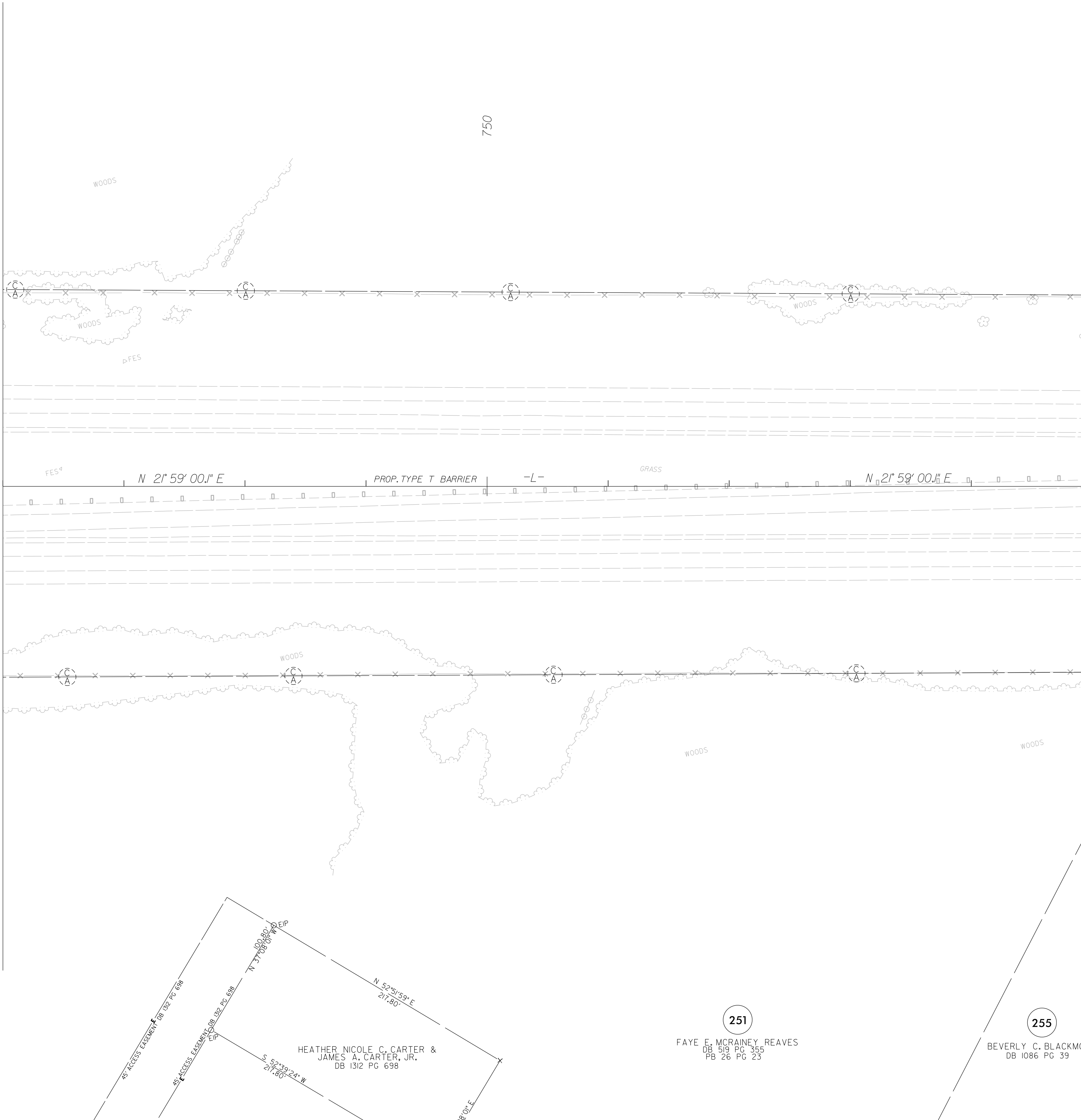
This 2nd day of September, 2021.

DocuSigned by:
Stephen Wolfe
302837272840448 02 November 2021
Professional Land Surveyor L-3259

REVISIONS

21OCT_202115:FC
21OCT_202115:0035C_NGDDOT_I5987B_RW_Robeson\SURVEY\DCNN\WORK\RW_series_sheets\I5987B_1s_rw24.dgn
jmatthews AT JK-A-042

MATCHLINE -L- STA. 746 + 00.00 SEE SHEET NO. RW23



MATCHLINE -L- STA. 755 + 00.00 SEE SHEET NO. RW25

(251)

FAYE E. MCRAINEY REAVES
DB 519 PG 355
PB 26 PG 23

(255)

BEVERLY C. BLACKMON
DB 1086 PG 39