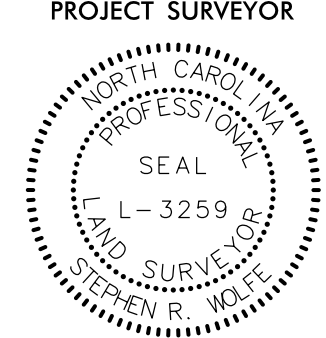


PROJECT REFERENCE NO.	SHEET NO.
I-5987B	RW21
Location and Surveys	
JoynerKeeny, PLLC 1051 N. Winstead Avenue Rocky Mount, NC 27804 252-977-3124 North Carolina Firm Number P-0551	
PROJECT SURVEYOR	
	
DOCUMENT NOT CONSIDERED FINAL UNLESS ALL SIGNATURES COMPLETED	

NOTES:

1. IF FURTHER INFORMATION REGARDING PROJECT CONTROL IS NEEDED PLEASE CONTACT THE LOCATION AND SURVEYS UNIT.
2. PROJECT CONTROL WAS ESTABLISHED USING GNSS, THE GLOBAL NAVIGATION SATELLITE SYSTEM.
3. RIGHT OF WAY MONUMENTATION ESTABLISHED 12JUL2021 TO 23AUG2021 .

I, Stephen R. Wolfe, certify that the right of way and permanent easement monumentation for this project shown herein was completed under my direct and responsible charge from an actual survey made under my supervision; that all horizontal closures had a minimum ratio of precision of 1:10,000 (Class A). Field work was performed from 12JUL2021 to 04JAN2022, and all coordinates are based on NAD83/2011; That this survey was performed to meet the requirements of 21NCAC 56.1600 as applicable.

This 22nd day of February, 2022.

Designed by:

 Stephen Wolfe
 3086875F3040446
 Professional Land Surveyor L-3259

-YIBRPA-
 PIs Sta 11+00.00 PI STA.15+53.89
 $\Theta_s = 0^\circ 42' 58.3''$ $\Delta = 7^\circ 42' 07.7''$ (RT)
 $L_s = 150.00'$ $D = 0^\circ 57' 17.7''$
 $LT = 100.00'$ $L = 806.56'$
 $ST = 50.00'$ $T = 403.89'$
 $R = 6,000.00'$
 $SE = 0.04$

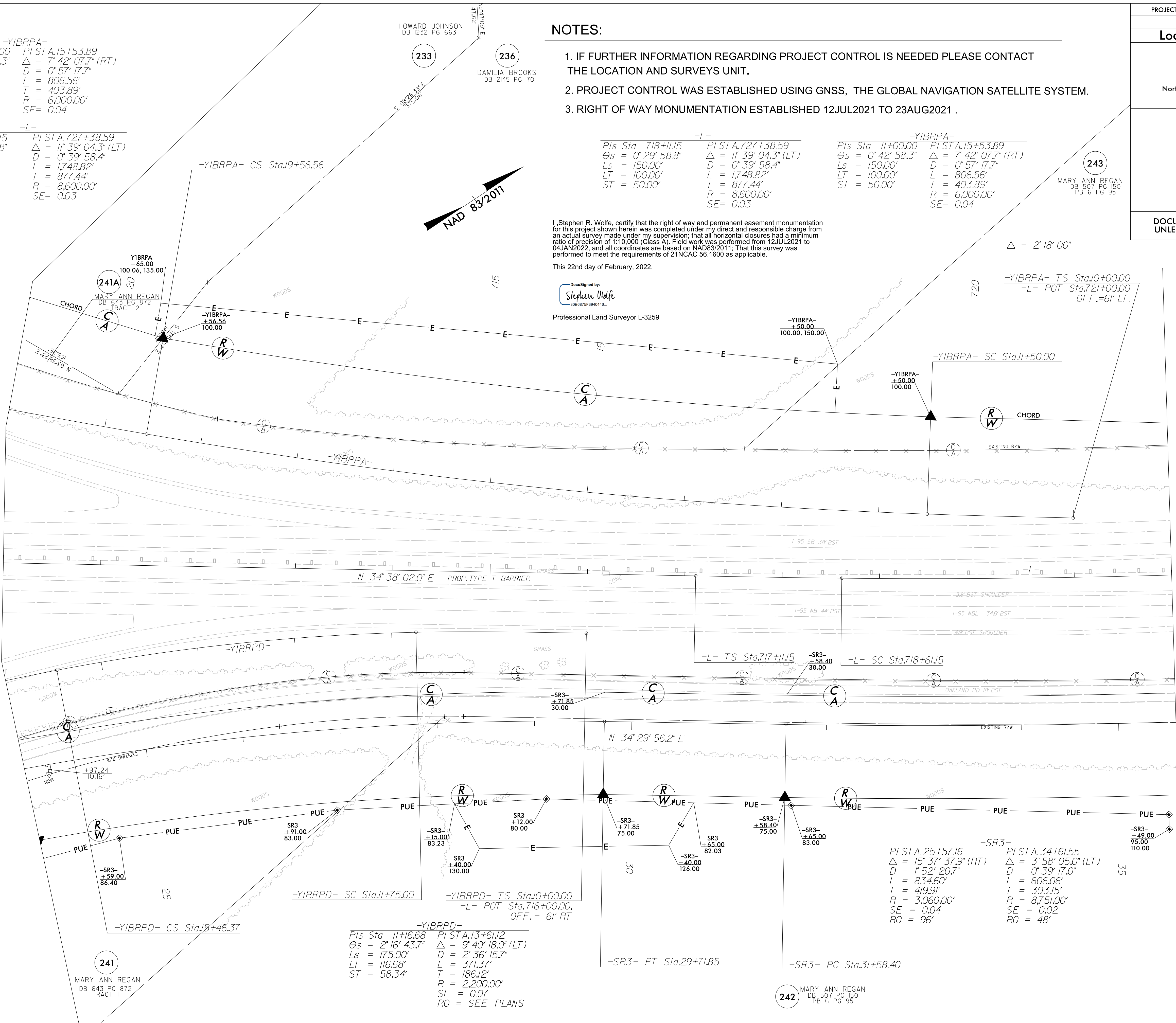
-L-
 PIs Sta 718+11.15 PI STA.727+38.59
 $\Theta_s = 0^\circ 29' 58.8''$ $\Delta = 11^\circ 39' 04.3''$ (LT)
 $L_s = 150.00'$ $D = 0^\circ 39' 58.4''$
 $LT = 100.00'$ $L = 1,748.82'$
 $ST = 50.00'$ $T = 877.44'$
 $R = 8,600.00'$
 $SE = 0.03$

-L-
 PIs Sta 718+11.15 PI STA.727+38.59
 $\Theta_s = 0^\circ 29' 58.8''$ $\Delta = 11^\circ 39' 04.3''$ (LT)
 $L_s = 150.00'$ $D = 0^\circ 39' 58.4''$
 $LT = 100.00'$ $L = 1,748.82'$
 $ST = 50.00'$ $T = 877.44'$
 $R = 8,600.00'$
 $SE = 0.03$

-YIBRPA-
 PIs Sta 11+00.00 PI STA.15+53.89
 $\Theta_s = 0^\circ 42' 58.3''$ $\Delta = 7^\circ 42' 07.7''$ (RT)
 $L_s = 150.00'$ $D = 0^\circ 57' 17.7''$
 $LT = 100.00'$ $L = 806.56'$
 $ST = 50.00'$ $T = 403.89'$
 $R = 6,000.00'$
 $SE = 0.04$

MATCHLINE -L- STA. 710+00.00
SEE SHEET NO. RW20

MATCHLINE -L- STA. 722+00.00 SEE SHEET NO. RW22



-YIBRPD-
 PIs Sta 11+16.68 PI STA.13+61.12
 $\Theta_s = 2^\circ 16' 43.7''$ $\Delta = 9^\circ 40' 18.0''$ (LT)
 $L_s = 175.00'$ $D = 2^\circ 36' 15.7''$
 $LT = 116.68'$ $L = 371.37'$
 $ST = 58.34'$ $T = 186.12'$
 $R = 2,200.00'$
 $SE = 0.07$
 $RO = \text{SEE PLANS}$

-SR3-
 PI STA.25+57.16 PI STA.34+61.55
 $\Delta = 15^\circ 37' 37.9''$ (RT) $\Delta = 3^\circ 58' 05.0''$ (LT)
 $D = 1^\circ 52' 20.7''$ $D = 0^\circ 39' 17.0''$
 $L = 834.60'$ $L = 606.06'$
 $T = 419.91'$ $T = 303.15'$
 $R = 3,060.00'$ $R = 8,751.00'$
 $SE = 0.04$ $SE = 0.02$
 $RO = 96'$ $RO = 48'$

241
 MARY ANN REGAN
 DB 643 PG 872
 TRACT 1

242
 MARY ANN REGAN
 DB 507 PG 150
 PB 6 PG 95

REVISIONS

25-FEB-2022 15:47 150035D.ncddot_15987B_RW_SURVEY.DGN\WORK\RM\RW SERIES SHEETS 220214\15987B_1.s_rw21.dgn
 25-FEB-2022 15:00 150035D.ncddot_15987B_RW_SURVEY.DGN\WORK\RM\RW SERIES SHEETS 220214\15987B_1.s_rw21.dgn
 jmatthews AT JK-A-042