


PROJECT REFERENCE NO.	SHEET NO.
I-5987B	RW19
Location and Surveys	
JoynerKeeny, PLLC 1051 N. Winstead Avenue Rocky Mount, NC 27804 252-977-3124 North Carolina Firm Number P-0551	
PROJECT SURVEYOR	
	
DOCUMENT NOT CONSIDERED FINAL UNLESS ALL SIGNATURES COMPLETED	

-L-

Pis Sta 675+53.35	PI STA.685+01.00	Pis Sta 694+27.86
$\Theta_s = 1^\circ 35' 29.6''$	$\Delta = 2^\circ 44' 41.8''$ (RT)	$\Theta_s = 1^\circ 35' 29.6''$
Ls = 250.00'	D = 1' 16' 23.7"	Ls = 250.00'
LT = 166.67'	L = 1,707.84'	LT = 166.67'
ST = 83.34'	T = 864.32'	ST = 83.34'
	R = 4,500.00'	
	SE = 0.05	
	RO = 250.00'	

-YIBRPB-

Pis Sta 16+76.86	PI STA.19+36.27
$\Theta_s = 2^\circ 45' 16.6''$	$\Delta = 12^\circ 36' 36.6''$ (LT)
Ls = 175.00'	D = 3' 08' 53.2"
LT = 116.68'	L = 400.56'
ST = 58.35'	T = 201.09'
	R = 1,820.00'
	SE = 0.07



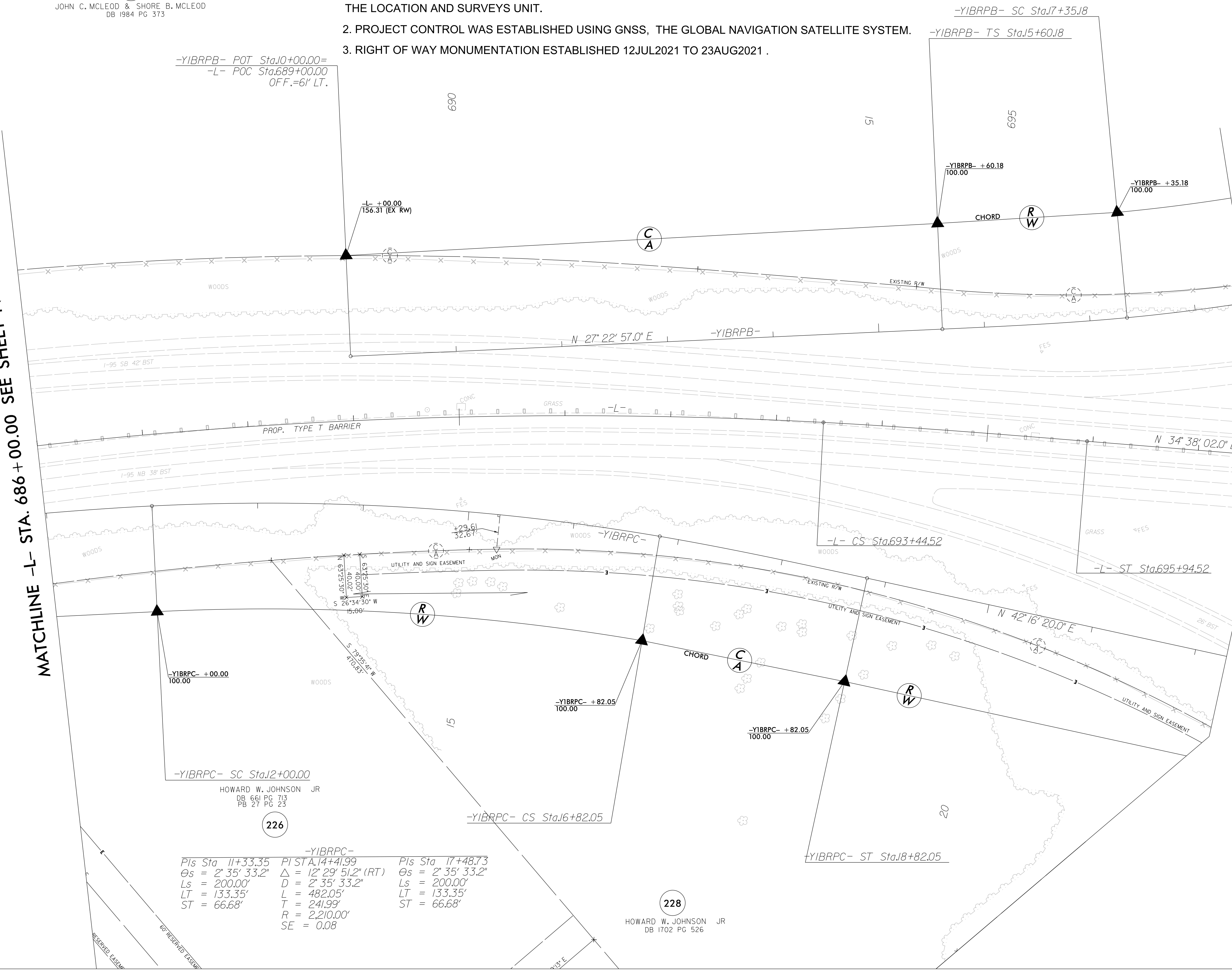
NOTES:

1. IF FURTHER INFORMATION REGARDING PROJECT CONTROL IS NEEDED PLEASE CONTACT THE LOCATION AND SURVEYS UNIT.
2. PROJECT CONTROL WAS ESTABLISHED USING GNSS, THE GLOBAL NAVIGATION SATELLITE SYSTEM.
3. RIGHT OF WAY MONUMENTATION ESTABLISHED 12JUL2021 TO 23AUG2021 .

227
 JOHN C. MCLEOD & SHORE B. MCLEOD
 DB 1984 PG 373

-YIBRPB- POT Sta.10+00.00=
 -L- POC Sta.689+00.00
 OFF.F.=61' LT.

MATCHLINE -L- STA. 686 + 00.00 SEE SHEET NO. RW18



226
 HOWARD W. JOHNSON JR
 DB 661 PG 713
 PB 27 PG 23

-YIBRPC-

Pis Sta 11+33.35	PI STA.14+41.99	Pis Sta 17+48.73
$\Theta_s = 2^\circ 35' 33.2''$	$\Delta = 12^\circ 29' 51.2''$ (RT)	$\Theta_s = 2^\circ 35' 33.2''$
Ls = 200.00'	D = 2' 35' 33.2"	Ls = 200.00'
LT = 133.35'	L = 482.05'	LT = 133.35'
ST = 66.68'	T = 241.99'	ST = 66.68'
	R = 2,210.00'	
	SE = 0.08	

228
 HOWARD W. JOHNSON JR
 DB 1702 PG 526

MATCHLINE -L- STA. 697 + 50.00 SEE SHEET NO. RW20

I, Stephen R. Wolfe, certify that the right of way and permanent easement monumentation for this project shown herein was completed under my direct and responsible charge from an actual survey made under my supervision; that all horizontal closures had a minimum ratio of precision of 1:10,000 (Class A). Field work was performed from 12JUL2021 to 23AUG2021, and all coordinates are based on NAD83/2011; That this survey was performed to meet the requirements of 21NCAC 56.1600 as applicable.
 This 2nd day of September, 2021.

DocuSigned by:
 Stephen Wolfe
 3086875F3940446E
 02 November 2021
 Professional Land Surveyor L-3259

REVISIONS

21-OCT-2021 15:59 35C_NCDOT_I5987B_RW_Robeson\SURVEY\DCDN\WORK\RW_series_sheets\I5987B_LS_RW19.dgn
 imatthews AT JKA-642