

6/2/19

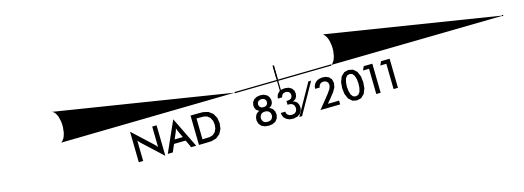
$\theta_s = 1^\circ 35' 29.6''$
 $L_s = 250.00'$
 $LT = 166.67'$
 $ST = 83.34'$

$\Delta = 2^\circ 44' 41.8'' (RT)$
 $D = 1^\circ 16' 23.7''$
 $L = 1,707.84'$
 $T = 864.32'$
 $R = 4,500.00'$
 $SE = 0.05$
 $RO = 250.00'$

$\theta_s = 1^\circ 35' 29.6''$
 $L_s = 250.00'$
 $LT = 166.67'$
 $ST = 83.34'$

NOTES:

1. IF FURTHER INFORMATION REGARDING PROJECT CONTROL IS NEEDED PLEASE CONTACT THE LOCATION AND SURVEYS UNIT.
2. PROJECT CONTROL WAS ESTABLISHED USING GNSS, THE GLOBAL NAVIGATION SATELLITE SYSTEM.
3. RIGHT OF WAY MONUMENTATION ESTABLISHED 12JUL2021 TO 23AUG2021 .



PROJECT REFERENCE NO. I-5987B	SHEET NO. RW18
Location and Surveys	
JoynerKeeny, PLLC 1051 N. Winstead Avenue Rocky Mount, NC 27804 252-977-3124 North Carolina Firm Number P-0551	
PROJECT SURVEYOR	
DOCUMENT NOT CONSIDERED FINAL UNLESS ALL SIGNATURES COMPLETED	

I, Stephen R. Wolfe, certify that the right of way and permanent easement monumentation for this project shown herein was completed under my direct and responsible charge from an actual survey made under my supervision; that all horizontal closures had a minimum ratio of precision of 1:10,000 (Class A). Field work was performed from 12JUL2021 to 23AUG2021, and all coordinates are based on NAD83/2011; That this survey was performed to meet the requirements of 21NCAC 56.1600 as applicable.

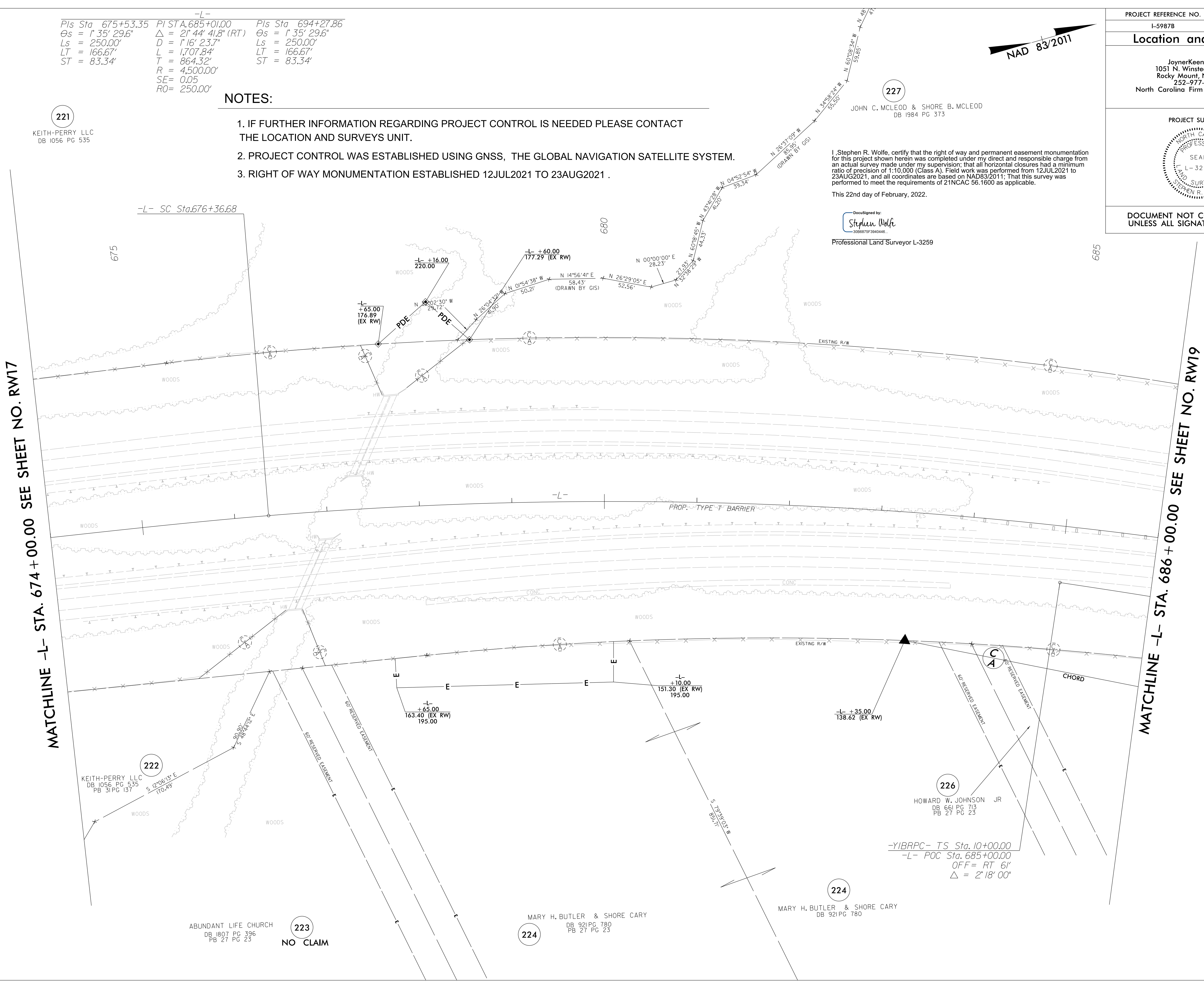
This 22nd day of February, 2022.

Designed by:

 Professional Land Surveyor L-3259

MATCHLINE -L- STA. 674+00.00 SEE SHEET NO. RW17

MATCHLINE -L- STA. 686+00.00 SEE SHEET NO. RW19



221
KEITH-PERRY LLC
DB 1056 PG 535

222
KEITH-PERRY LLC
DB 1056 PG 535
PB 31 PG 137

ABUNDANT LIFE CHURCH
DB 1807 PG 396
PB 27 PG 23

223
NO CLAIM

224
MARY H. BUTLER & SHORE CARY
DB 921 PG 780
PB 27 PG 23

224
MARY H. BUTLER & SHORE CARY
DB 921 PG 780

226
HOWARD W. JOHNSON JR
DB 661 PG 713
PB 27 PG 23

-YIBRPC- TS Sta. 10+00.00
 -L- POC Sta. 685+00.00
 OFF= RT 6'
 $\Delta = 2^\circ 18' 00''$

REVISIONS

22-FEB-2022 11:57 15900350_INCDOT_I5987B_RW_SURVEY.DGN\WORK\RM\RW SERIES SHEETS 220214\15987B_1s_rw18.dgn
 25-FEB-2019 15:00 15900350_INCDOT_I5987B_RW_SURVEY.DGN\WORK\RM\RW SERIES SHEETS 220214\15987B_1s_rw18.dgn
 jmatthews AT JKA-042