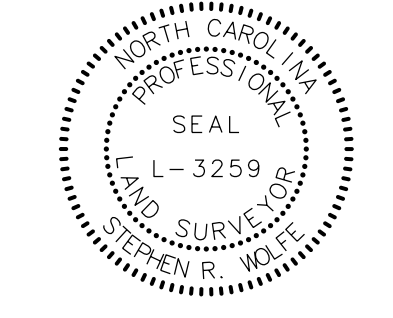


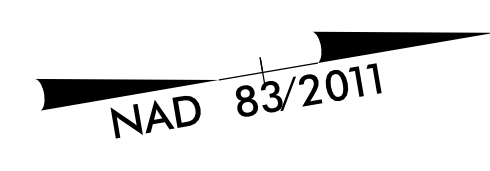
Location and Surveys

JoynerKeeny, PLLC
 1051 N. Winstead Avenue
 Rocky Mount, NC 27804
 252-977-3124
 North Carolina Firm Number P-0551

PROJECT SURVEYOR



DOCUMENT NOT CONSIDERED FINAL UNLESS ALL SIGNATURES COMPLETED



NOTES:

1. IF FURTHER INFORMATION REGARDING PROJECT CONTROL IS NEEDED PLEASE CONTACT THE LOCATION AND SURVEYS UNIT.
2. PROJECT CONTROL WAS ESTABLISHED USING GNSS, THE GLOBAL NAVIGATION SATELLITE SYSTEM.
3. RIGHT OF WAY MONUMENTATION ESTABLISHED 12JUL2021 TO 23AUG2021 .

I, Stephen R. Wolfe, certify that the right of way and permanent easement monumentation for this project shown herein was completed under my direct and responsible charge from an actual survey made under my supervision; that all horizontal closures had a minimum ratio of precision of 1:10,000 (Class A). Field work was performed from 12JUL2021 to 23AUG2021, and all coordinates are based on NAD83/2011; That this survey was performed to meet the requirements of 21NCAC 56.1600 as applicable.

This 2nd day of September, 2021.

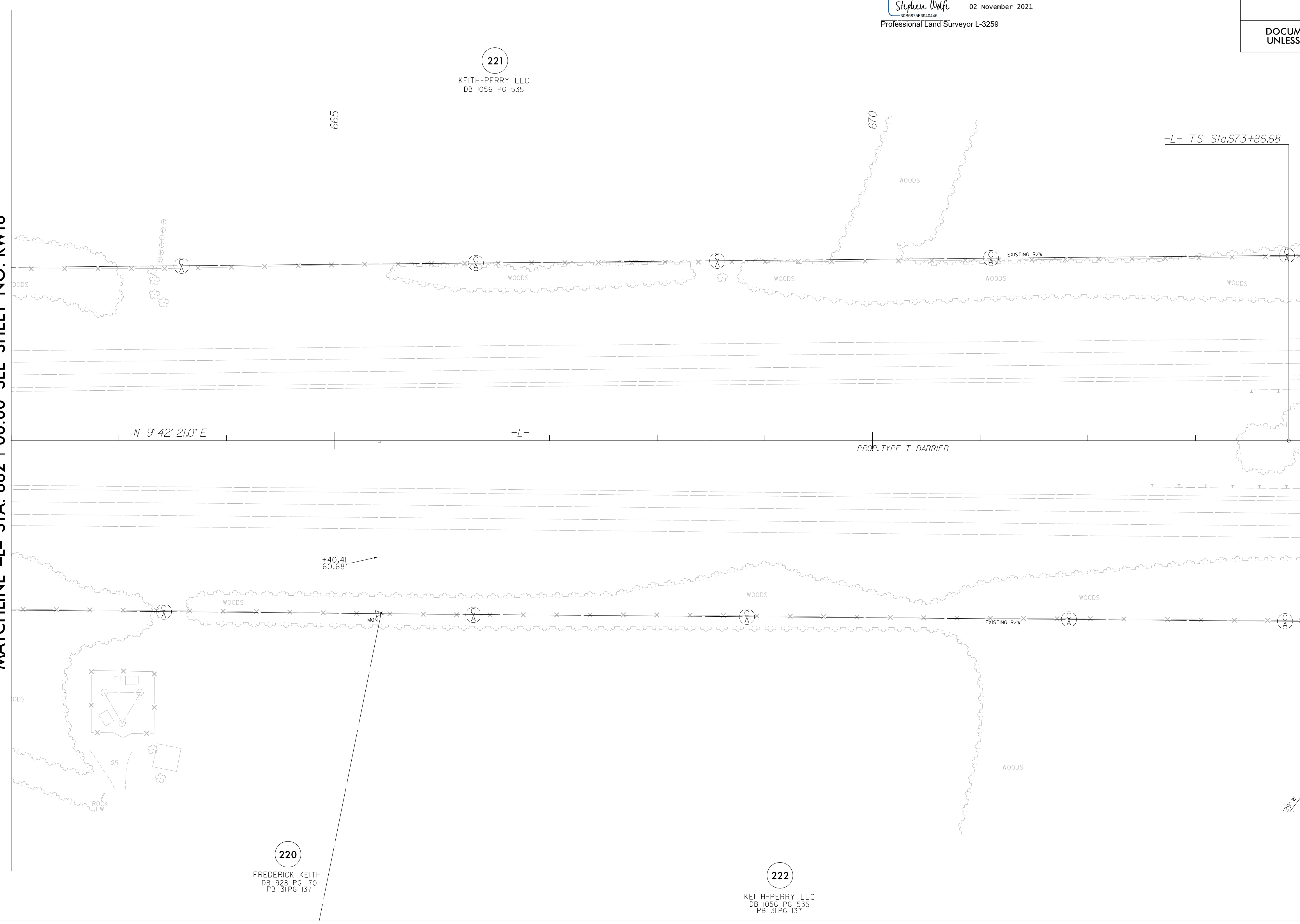
DocuSigned by:
Stephen Wolfe
 3056875F3960446
 02 November 2021
 Professional Land Surveyor L-3259

REVISIONS

21-OCT-2021 15:08
 21-OCT-2021 15:08
 jmatthews

MATCHLINE -L- STA. 662 + 00.00 SEE SHEET NO. RW16

MATCHLINE -L- STA. 674 + 00.00 SEE SHEET NO. RW18



221
 KEITH-PERRY, LLC
 DB 1056 PG 535

220
 FREDERICK KEITH
 DB 928 PG 170
 PB 31 PG 137

222
 KEITH-PERRY, LLC
 DB 1056 PG 535
 PB 31 PG 137