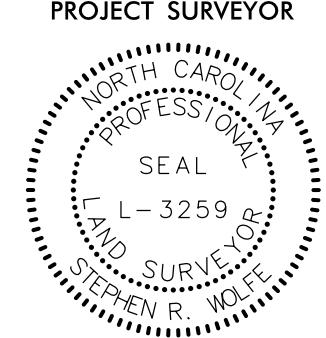
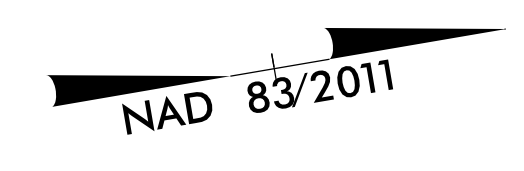


6/2/19

REVISIONS

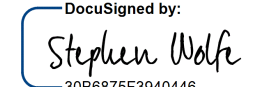
21 OCT 2021 15:35:00 35C NCDOT\_I5987B\_LRW\_Robeson\SURVEY\DCNN\WORK\RW\_series sheets\I5987b\_LRW16.dgn  
21 OCT 2021 15:35:00 35C NCDOT\_I5987B\_LRW\_Robeson\SURVEY\DCNN\WORK\RW\_series sheets\I5987b\_LRW16.dgn  
jmatthews AT JKA-042

PROJECT REFERENCE NO. I-5987B	SHEET NO. RW16
<b>Location and Surveys</b>	
JoynerKeeny, PLLC 1051 N. Winstead Avenue Rocky Mount, NC 27804 252-977-3124 North Carolina Firm Number P-0551	
PROJECT SURVEYOR	
	
DOCUMENT NOT CONSIDERED FINAL UNLESS ALL SIGNATURES COMPLETED	



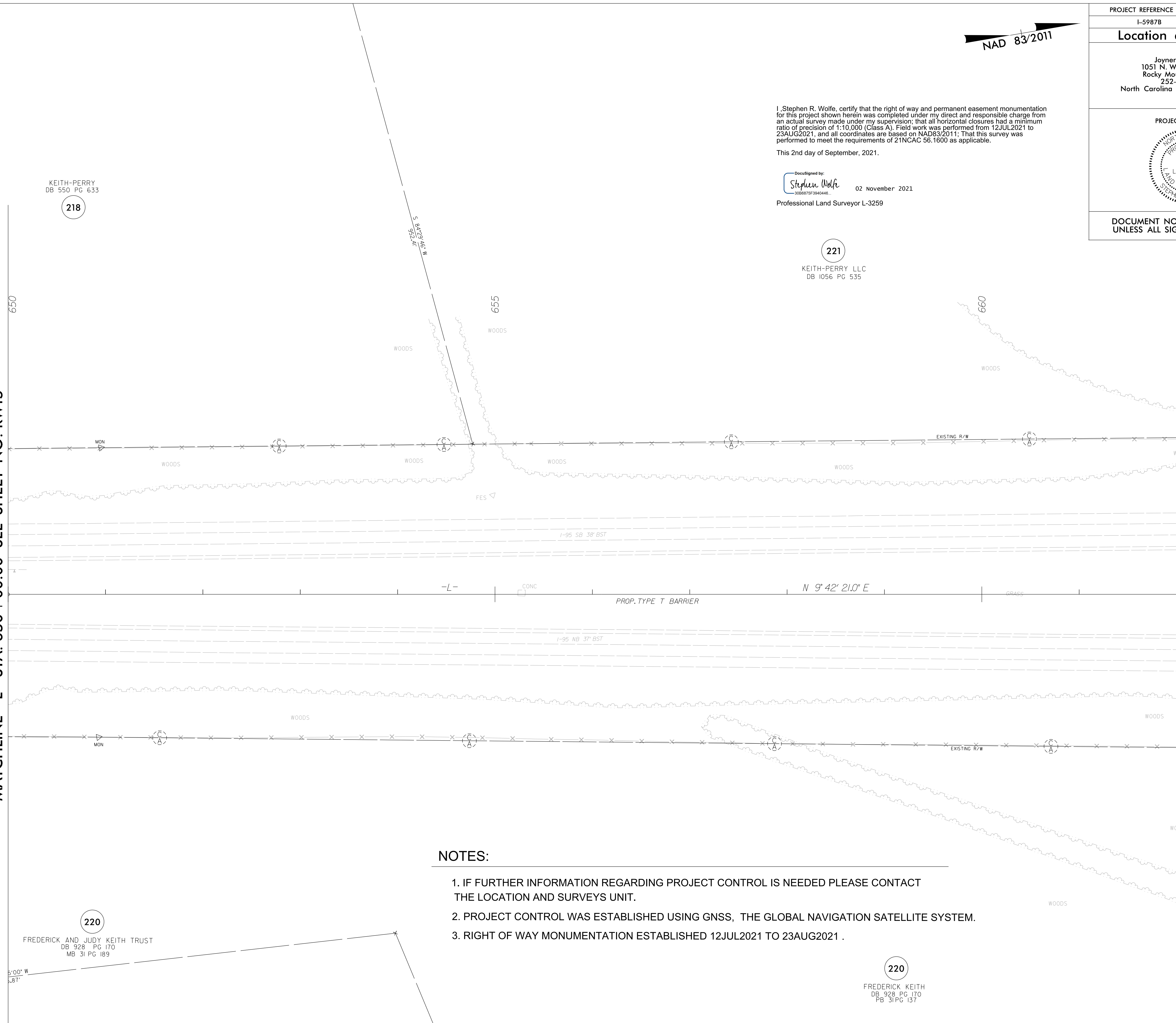
I, Stephen R. Wolfe, certify that the right of way and permanent easement monumentation for this project shown herein was completed under my direct and responsible charge from an actual survey made under my supervision; that all horizontal closures had a minimum ratio of precision of 1:10,000 (Class A). Field work was performed from 12JUL2021 to 23AUG2021, and all coordinates are based on NAD83/2011; That this survey was performed to meet the requirements of 21NCAC 56.1600 as applicable.

This 2nd day of September, 2021.

Decided by:  
  
 02 November 2021  
 Professional Land Surveyor L-3259

KEITH-PERRY  
 DB 550 PG 633  
 218

221  
 KEITH-PERRY LLC  
 DB 1056 PG 535



MATCHLINE -L- STA. 650 + 00.00 SEE SHEET NO. RW15

MATCHLINE -L- STA. 662 + 00.00 SEE SHEET NO. RW17

**NOTES:**

1. IF FURTHER INFORMATION REGARDING PROJECT CONTROL IS NEEDED PLEASE CONTACT THE LOCATION AND SURVEYS UNIT.
2. PROJECT CONTROL WAS ESTABLISHED USING GNSS, THE GLOBAL NAVIGATION SATELLITE SYSTEM.
3. RIGHT OF WAY MONUMENTATION ESTABLISHED 12JUL2021 TO 23AUG2021 .

220  
 FREDERICK AND JUDY KEITH TRUST  
 DB 928 PG 170  
 MB 31 PG 189

220  
 FREDERICK KEITH  
 DB 928 PG 170  
 PB 31 PG 137