

6/2/19

REVISIONS

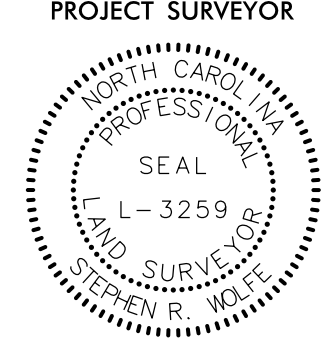
22-FEB-2022 10:00:35D INCDOT\_15987B\_RW\_SURVEY.DGN\WORK\RW\RW SERIES SHEETS 220214\15987b\_1s\_rw14.dgn  
 jmatthews AT JK-A-042

I, Stephen R. Wolfe, certify that the right of way and permanent easement monumentation for this project shown herein was completed under my direct and responsible charge from an actual survey made under my supervision; that all horizontal closures had a minimum ratio of precision of 1:10,000 (Class A). Field work was performed from 12JUL2021 to 23AUG2021, and all coordinates are based on NAD83/2011; That this survey was performed to meet the requirements of 21NCAC 56.1600 as applicable.

This 22nd day of February, 2022.

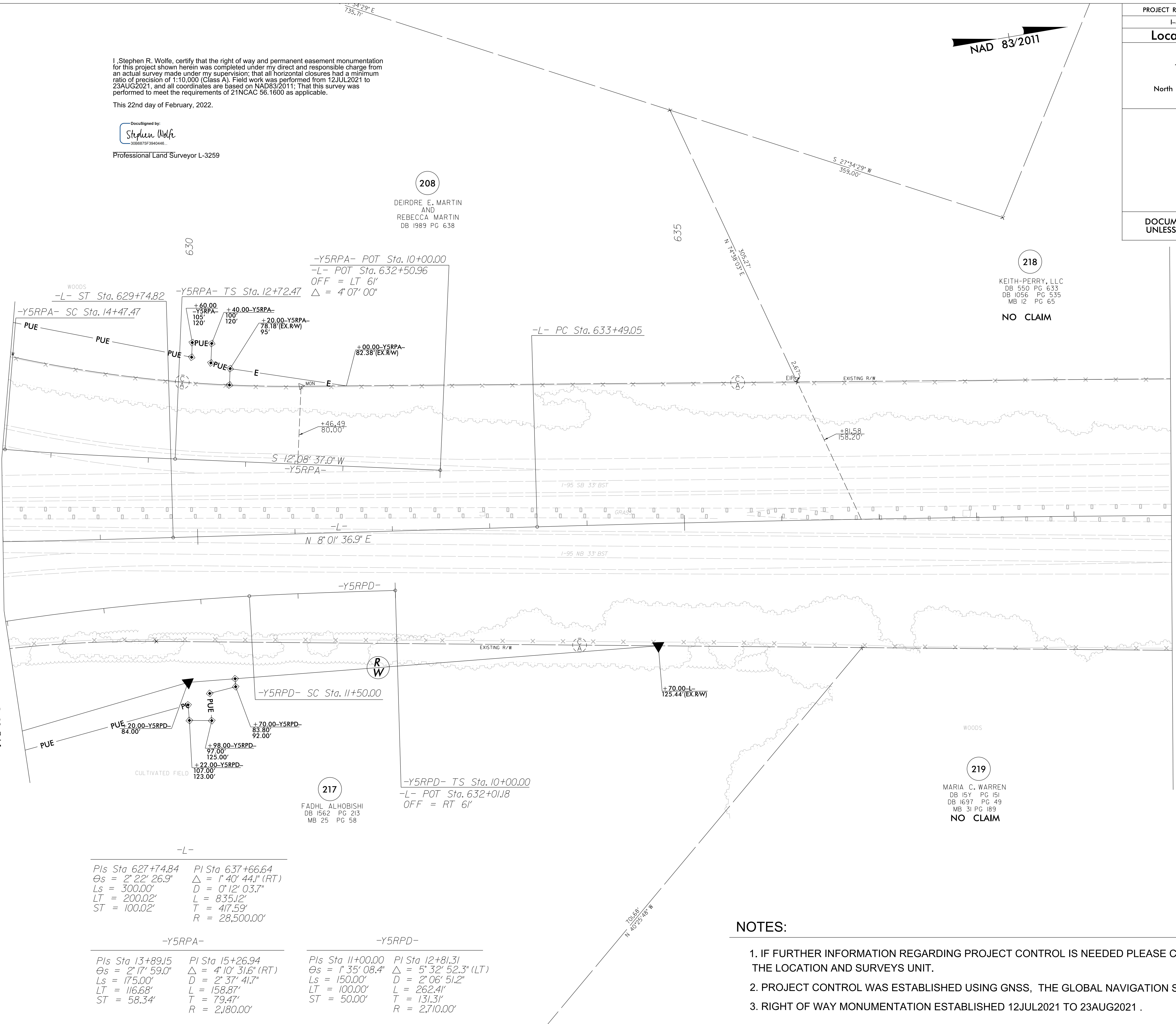
DocuSigned by:  
**Stephen Wolfe**  
 3088875F3940446...  
 Professional Land Surveyor L-3259

NAD 83/2011

PROJECT REFERENCE NO. I-5987B	SHEET NO. RW14
<b>Location and Surveys</b>	
JoynerKeeny, PLLC 1051 N. Winstead Avenue Rocky Mount, NC 27804 252-977-3124 North Carolina Firm Number P-0551	
PROJECT SURVEYOR	
	
DOCUMENT NOT CONSIDERED FINAL UNLESS ALL SIGNATURES COMPLETED	

MATCHLINE -L- STA. 628 + 00.00 SEE SHEET NO. RW13

MATCHLINE -L- STA. 640 + 00.00 SEE SHEET NO. RW15



**208**  
 DEIRDRE E. MARTIN  
 AND  
 REBECCA MARTIN  
 DB 1989 PG 638

**218**  
 KEITH-PERRY, LLC  
 DB 550 PG 633  
 DB 1056 PG 535  
 MB 12 PG 65  
**NO CLAIM**

**217**  
 FADHL ALHOBISHI  
 DB 1562 PG 213  
 MB 25 PG 58

**219**  
 MARIA C. WARREN  
 DB 151 PG 151  
 DB 1697 PG 49  
 MB 31 PG 189  
**NO CLAIM**

-L-  
 Pls Sta 627+74.84 PI Sta 637+66.64  
 Θs = 2° 22' 26.9" Δ = 1° 40' 44.1" (RT)  
 Ls = 300.00' D = 0° 12' 03.7"  
 LT = 200.02' L = 835.12"  
 ST = 100.02' T = 417.59'  
 R = 28,500.00'

-Y5RPA-  
 Pls Sta 13+89.15 PI Sta 15+26.94  
 Θs = 2° 17' 59.0" Δ = 4° 10' 31.6" (RT)  
 Ls = 175.00' D = 2° 37' 41.7"  
 LT = 116.68' L = 158.87"  
 ST = 58.34' T = 79.47'  
 R = 2,180.00'

-Y5RPD-  
 Pls Sta 11+00.00 PI Sta 12+81.31  
 Θs = 1° 35' 08.4" Δ = 5° 32' 52.3" (LT)  
 Ls = 150.00' D = 2° 06' 51.2"  
 LT = 100.00' L = 262.41"  
 ST = 50.00' T = 131.31'  
 R = 2,710.00'

**NOTES:**

1. IF FURTHER INFORMATION REGARDING PROJECT CONTROL IS NEEDED PLEASE CONTACT THE LOCATION AND SURVEYS UNIT.
2. PROJECT CONTROL WAS ESTABLISHED USING GNSS, THE GLOBAL NAVIGATION SATELLITE SYSTEM.
3. RIGHT OF WAY MONUMENTATION ESTABLISHED 12JUL2021 TO 23AUG2021 .