

PROJECT REFERENCE NO.	SHEET NO.
I-5987B	RW13
Location and Surveys	
JoynerKeeny, PLLC 1051 N. Winstead Avenue Rocky Mount, NC 27804 252-977-3124 North Carolina Firm Number P-0551	
PROJECT SURVEYOR	
DOCUMENT NOT CONSIDERED FINAL UNLESS ALL SIGNATURES COMPLETED	

I, Stephen R. Wolfe, certify that the right of way and permanent easement monumentation for this project shown herein was completed under my direct and responsible charge from an actual survey made under my supervision; that all horizontal closures had a minimum ratio of precision of 1:10,000 (Class A). Field work was performed from 12JUL2021 to 04JAN2022, and all coordinates are based on NAD83(2011). That this survey was performed to meet the requirements of 21NCAC 56.1600 as applicable.

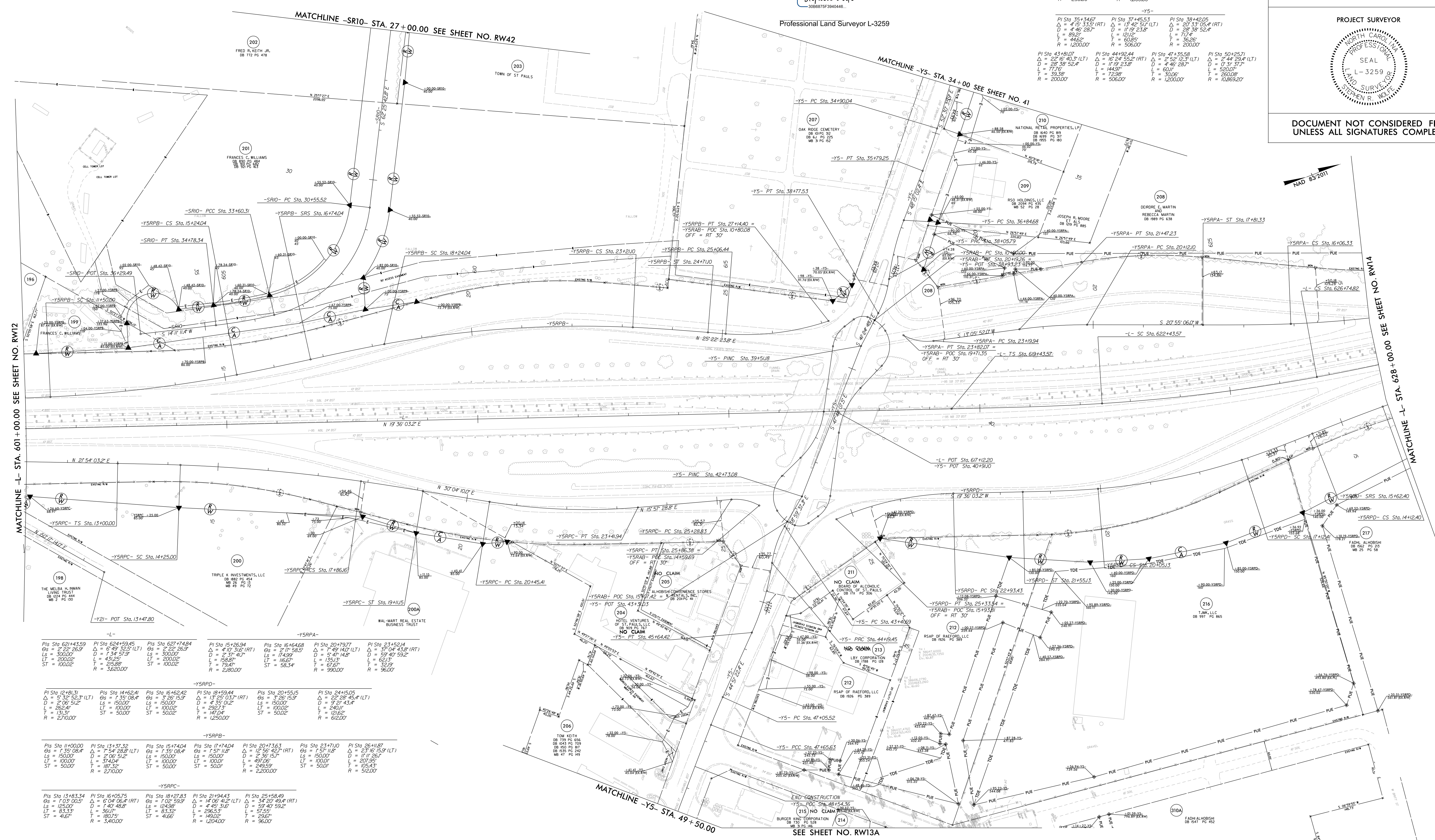
This 14th day of February, 2022.

DocuSigned by:

 Stephen Wolfe
 0066875F3640446

Professional Land Surveyor L-3259

-SR10-			
PI Sta 32+30.09 Δ = 69°31'07.9" (RT) D = 22°55'05.9" L = 30479 T = 17459 R = 2500.00	PI Sta 34+10.39 Δ = 6°45'46.9" (RT) D = 5°43'46.5" L = 18033 T = 5209 R = 1000.00		
-Y5-			
PI Sta 35+34.67 Δ = 4°19'33.9" (RT) D = 4°46'28.7" L = 8927 T = 44652 R = 1200.00	PI Sta 37+45.53 Δ = 13°42'51" (LT) D = 17°19'23.8" L = 12025 T = 60185 R = 506.00	PI Sta 38+42.05 Δ = 20°33'05.4" (RT) D = 28°39'52.4" L = 7174 T = 35285 R = 200.00	
PI Sta 43+81.07 Δ = 22°16'40.3" (LT) D = 28°39'52.4" L = 7736 T = 35285 R = 200.00	PI Sta 44+92.44 Δ = 16°24'53.2" (RT) D = 17°19'23.8" L = 14457 T = 72387 R = 506.00	PI Sta 47+35.58 Δ = 2°36'12.3" (LT) D = 4°46'28.7" L = 6017 T = 30067 R = 1200.00	PI Sta 50+25.71 Δ = 2°44'29.4" (RT) D = 2°31'37.7" L = 52077 T = 260387 R = 10269.20



PI Sta 62+43.59 Δ = 2°22'26.9" D = 3000.00 L = 2000.00 ST = 1000.00	PI Sta 62+43.59 Δ = 6°49'32.5" (LT) D = 1°34'57.9" L = 43125 T = 21589 R = 3280.00	PI Sta 62+74.84 Δ = 3°28'15.9" D = 1500.00 L = 1500.00 ST = 1000.00	PI Sta 15+26.94 Δ = 4°10'31.6" (RT) D = 2°37'41.7" L = 15637 T = 7947 R = 280.00	PI Sta 15+26.94 Δ = 7°17'58.5" D = 17499 L = 13513 T = 6767 R = 990.00	PI Sta 23+52.4 Δ = 37°04'43.8" (RT) D = 59°40'59.2" L = 6213 T = 3219 R = 960.00
PI Sta 12+81.31 Δ = 5°32'52.1" (LT) D = 2°06'51.2" L = 26244 T = 13134 R = 2710.00	PI Sta 14+62.41 Δ = 1°39'08.4" D = 1500.00 L = 1500.00 ST = 500.00	PI Sta 16+24.22 Δ = 3°28'15.9" D = 1500.00 L = 1500.00 ST = 500.00	PI Sta 18+59.44 Δ = 13°28'03.9" (RT) D = 4°38'01.2" L = 24273 T = 14704 R = 1250.00	PI Sta 20+55.15 Δ = 3°28'15.9" D = 1500.00 L = 1500.00 ST = 500.00	PI Sta 24+15.05 Δ = 22°38'45.4" (LT) D = 9°27'43.4" L = 24010 T = 12543 R = 612.00
PI Sta 11+00.00 Δ = 1°35'08.4" D = 1500.00 L = 1500.00 ST = 500.00	PI Sta 13+37.32 Δ = 5°04'08.4" (LT) D = 2°06'51.2" L = 31404 T = 97132 R = 2710.00	PI Sta 15+74.04 Δ = 1°39'08.4" D = 1500.00 L = 1500.00 ST = 500.00	PI Sta 17+74.04 Δ = 13°19'11.8" D = 2°36'15.7" L = 49716 T = 24859 R = 2200.00	PI Sta 20+73.63 Δ = 12°56'42.9" (RT) D = 2°36'15.7" L = 10000 T = 49716 R = 500.00	PI Sta 23+71.00 Δ = 1°51'11.8" D = 17°19'23.8" L = 20795 T = 10543 R = 512.00
PI Sta 13+83.34 Δ = 1°35'08.4" D = 1500.00 L = 1500.00 ST = 500.00	PI Sta 16+05.75 Δ = 5°04'08.4" (LT) D = 1°40'48.8" L = 36109 T = 18075 R = 3400.00	PI Sta 18+27.23 Δ = 1°39'08.4" D = 1500.00 L = 1500.00 ST = 500.00	PI Sta 21+94.43 Δ = 14°39'46.2" (LT) D = 4°45'31.6" L = 29653 T = 14902 R = 1204.00	PI Sta 25+58.49 Δ = 59°40'59.2" D = 57°50' L = 29653 T = 2967 R = 960.00	

- NOTES:**
1. IF FURTHER INFORMATION REGARDING PROJECT CONTROL IS NEEDED PLEASE CONTACT THE LOCATION AND SURVEYS UNIT.
 2. PROJECT CONTROL WAS ESTABLISHED USING GNSS, THE GLOBAL NAVIGATION SATELLITE SYSTEM.
 3. RIGHT OF WAY MONUMENTATION ESTABLISHED 12JUL2021 TO 04JAN2022.

REVISIONS

25-FEB-2023 10:30:35D:\350\WORK\RW\RW SERIES SHEETS 220214\15987B\1.s.rw13.dgn
 25-FEB-2023 10:30:35D:\350\WORK\RW\RW SERIES SHEETS 220214\15987B\1.s.rw13.dgn
 AT J.K.A-042