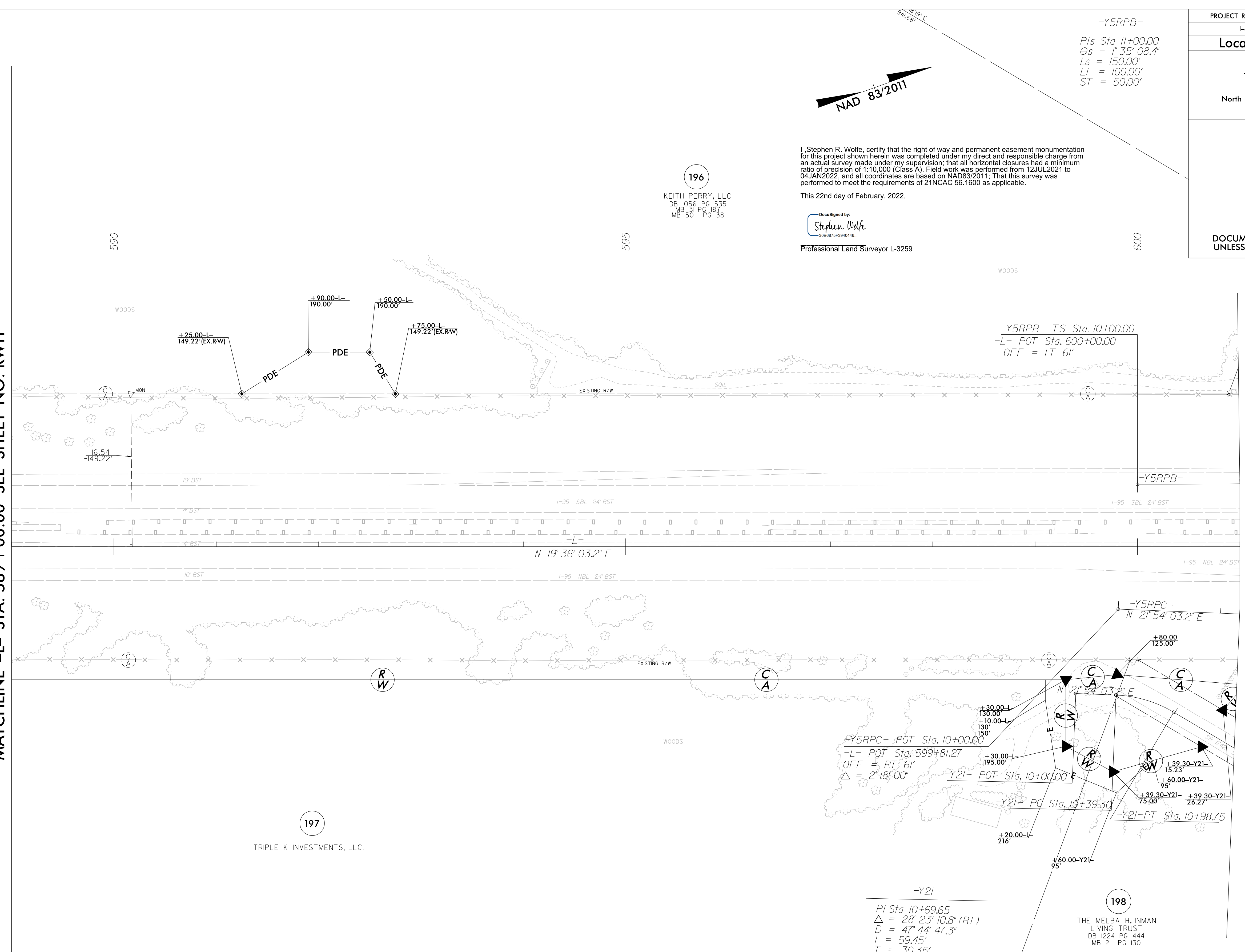


REVISIONS

22-FEB-2022 08:30
25-FEB-2022 13:00
25-FEB-2022 13:00
jmatthews AT jk4-042

MATCHLINE -L- STA. 589 + 00.00 SEE SHEET NO. RW11

MATCHLINE -L- STA. 601 + 00.00 SEE SHEET NO. RW13



I, Stephen R. Wolfe, certify that the right of way and permanent easement monumentation for this project shown herein was completed under my direct and responsible charge from an actual survey made under my supervision, that all horizontal closures had a minimum ratio of precision of 1:10,000 (Class A). Field work was performed from 12 JUL 2021 to 04 JAN 2022, and all coordinates are based on NAD83/2011; That this survey was performed to meet the requirements of 21NCAC 56.1600 as applicable.

This 22nd day of February, 2022.

DocuSigned by:
Stephen Wolfe
3056875F3840446...
Professional Land Surveyor L-3259

-Y5RPB-
Pls Sta 11+00.00
Cs = 1' 35' 08.4"
Ls = 150.00'
LT = 100.00'
ST = 50.00'

-Y5RPB- TS Sta. 10+00.00
-L- POT Sta. 600+00.00
OFF = LT 6'

-Y5RPC- POT Sta. 10+00.00
-L- POT Sta. 599+81.27
OFF = RT 6'
Δ = 2' 18' 00"

-Y21-
PI Sta 10+69.65
Δ = 28' 23' 10.8" (RT)
D = 47' 44' 47.3"
L = 59.45'
T = 30.35'
R = 120.00'

198
THE MELBA H. INMAN
LIVING TRUST
DB 1224 PG 444
MB 2 PG 130

PROJECT REFERENCE NO. I-5987B	SHEET NO. RW12
Location and Surveys	
JoynerKeeny, PLLC 1051 N. Winstead Avenue Rocky Mount, NC 27804 252-977-3124 North Carolina Firm Number P-0551	
PROJECT SURVEYOR	
DOCUMENT NOT CONSIDERED FINAL UNLESS ALL SIGNATURES COMPLETED	

NOTES:

1. IF FURTHER INFORMATION REGARDING PROJECT CONTROL IS NEEDED PLEASE CONTACT THE LOCATION AND SURVEYS UNIT.
2. PROJECT CONTROL WAS ESTABLISHED USING GNSS, THE GLOBAL NAVIGATION SATELLITE SYSTEM.
3. RIGHT OF WAY MONUMENTATION ESTABLISHED 12JUL2021 TO 04JAN2022.