
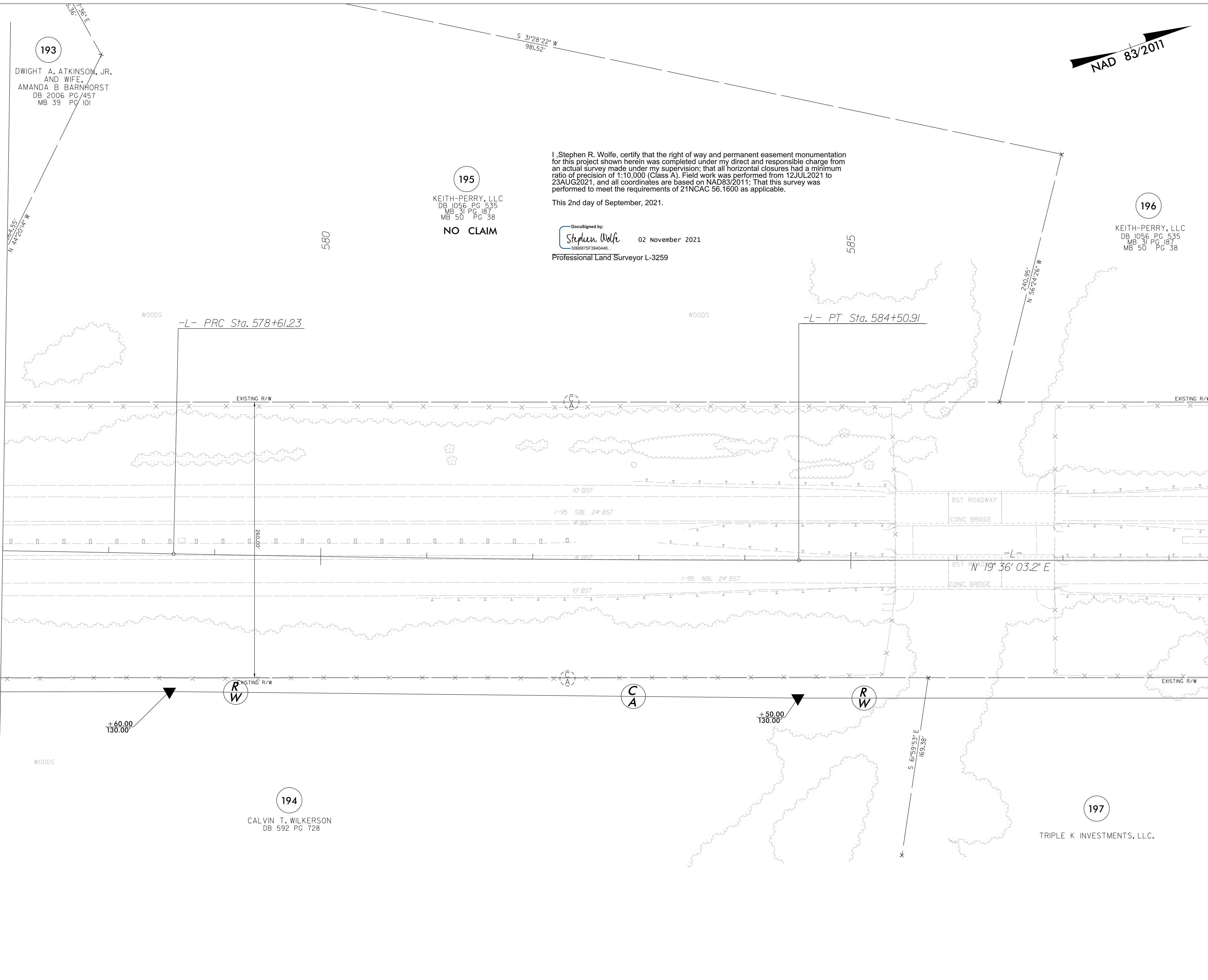


6/2/19

PROJECT REFERENCE NO.	SHEET NO.
I-5987B	RW11
<b>Location and Surveys</b>	
JoynerKeeny, PLLC 1051 N. Winstead Avenue Rocky Mount, NC 27804 252-977-3124 North Carolina Firm Number P-0551	
PROJECT SURVEYOR	
	
DOCUMENT NOT CONSIDERED FINAL UNLESS ALL SIGNATURES COMPLETED	

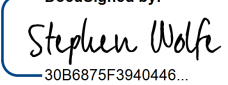


MATCHLINE -L- STA. 577 + 00.00 SEE SHEET NO. RW10

MATCHLINE -L- STA. 589 + 00.00 SEE SHEET NO. RW12

I, Stephen R. Wolfe, certify that the right of way and permanent easement monumentation for this project shown herein was completed under my direct and responsible charge from an actual survey made under my supervision; that all horizontal closures had a minimum ratio of precision of 1:10,000 (Class A). Field work was performed from 12JUL2021 to 23AUG2021, and all coordinates are based on NAD83/2011; That this survey was performed to meet the requirements of 21NCAC 56.1600 as applicable.

This 2nd day of September, 2021.

DocuSigned by:  
  
 02 November 2021  
 Professional Land Surveyor L-3259

195  
 KEITH-PERRY, LLC  
 DB 1056 PG 535  
 MB 31 PG 187  
 MB 50 PG 38  
**NO CLAIM**

194  
 CALVIN T. WILKERSON  
 DB 592 PG 728

196  
 KEITH-PERRY, LLC  
 DB 1056 PG 535  
 MB 31 PG 187  
 MB 50 PG 38

-L-

PI Sta 576+78.99	PI Sta 581+56.08
$\Delta = 0^\circ 43' 57.9''$ (RT)	$\Delta = 1^\circ 11' 07.7''$ (LT)
$D = 0^\circ 12' 03.7''$	$D = 0^\circ 12' 03.7''$
$L = 364.49'$	$L = 589.68'$
$T = 100.00'$	$T = 200.00'$

**NOTES:**

1. IF FURTHER INFORMATION REGARDING PROJECT CONTROL IS NEEDED PLEASE CONTACT THE LOCATION AND SURVEYS UNIT.
2. PROJECT CONTROL WAS ESTABLISHED USING GNSS, THE GLOBAL NAVIGATION SATELLITE SYSTEM.
3. RIGHT OF WAY MONUMENTATION ESTABLISHED 12JUL2021 TO 23AUG2021 .

REVISIONS

2:\CADD\2021\190035C\_NCDOT\_I5987B\_RW\_Robeson\SURVEY\DCNN\WORK\RW\_series\_sheets\I5987B\_Ls\_rw11.dgn  
 jmatthews AT JK-A-042