
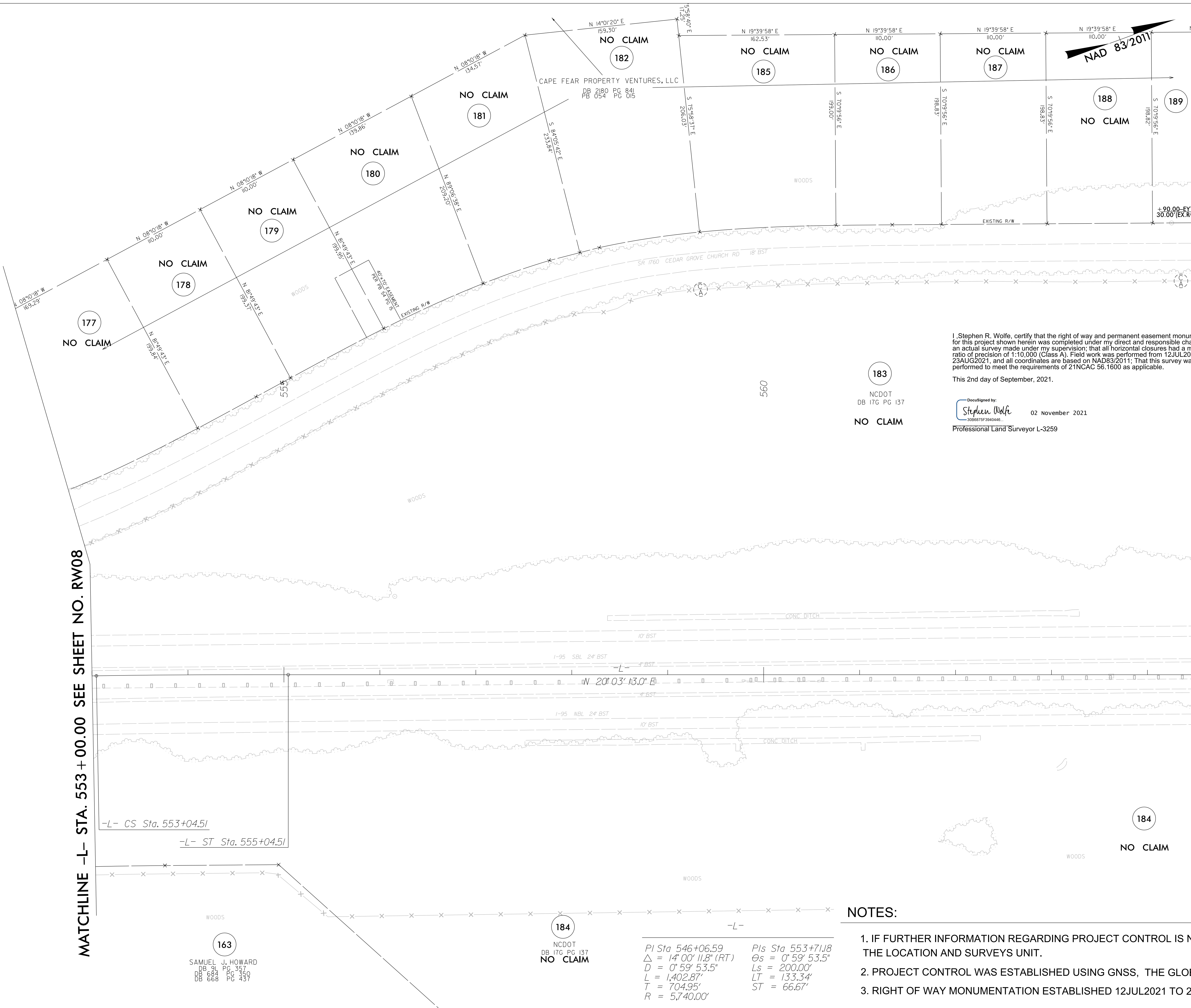


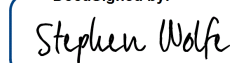
6/2/19

PROJECT REFERENCE NO. I-5987B	SHEET NO. RW09
<b>Location and Surveys</b>	
JoynerKeeny, PLLC 1051 N. Winstead Avenue Rocky Mount, NC 27804 252-977-3124 North Carolina Firm Number P-0551	
PROJECT SURVEYOR	
	
DOCUMENT NOT CONSIDERED FINAL UNLESS ALL SIGNATURES COMPLETED	



I, Stephen R. Wolfe, certify that the right of way and permanent easement monumentation for this project shown herein was completed under my direct and responsible charge from an actual survey made under my supervision; that all horizontal closures had a minimum ratio of precision of 1:10,000 (Class A). Field work was performed from 12 JUL 2021 to 23 AUG 2021, and all coordinates are based on NAD83/2011; That this survey was performed to meet the requirements of 21NCAC 56.1600 as applicable.

This 2nd day of September, 2021.

DocuSigned by:  
  
 02 November 2021  
 3088875F3940446...  
 Professional Land Surveyor L-3259

REVISIONS

MATCHLINE -L- STA. 553 + 00.00 SEE SHEET NO. RW08

MATCHLINE -L- STA. 565 + 00.00 SEE SHEET NO. RW10

NOTES:

1. IF FURTHER INFORMATION REGARDING PROJECT CONTROL IS NEEDED PLEASE CONTACT THE LOCATION AND SURVEYS UNIT.
2. PROJECT CONTROL WAS ESTABLISHED USING GNSS, THE GLOBAL NAVIGATION SATELLITE SYSTEM.
3. RIGHT OF WAY MONUMENTATION ESTABLISHED 12JUL2021 TO 23AUG2021 .

$PI\ Sta\ 546+06.59$   
 $\Delta = 14' 00'' 11.8'' (RT)$   
 $D = 0' 59' 53.5''$   
 $L = 1,402.87'$   
 $T = 704.95'$   
 $R = 5,740.00'$

$PIs\ Sta\ 553+71.18$   
 $\Theta_s = 0' 59' 53.5''$   
 $Ls = 200.00'$   
 $LT = 133.34'$   
 $ST = 66.67'$

163  
 SAMUEL J. HOWARD  
 DB 91 PG 357  
 DB 668 PG 437

184  
 NCDOT  
 DB 17G PG 137  
 NO CLAIM

2:\CADD\2021\1137\00035C\_NCDOT\_I5987B\_RW\_Robeson\SURVEY\DCNN\WORK\RW series sheets\I5987B\_Ls\_rw09.dgn  
 jmatthews AT JKA-042