

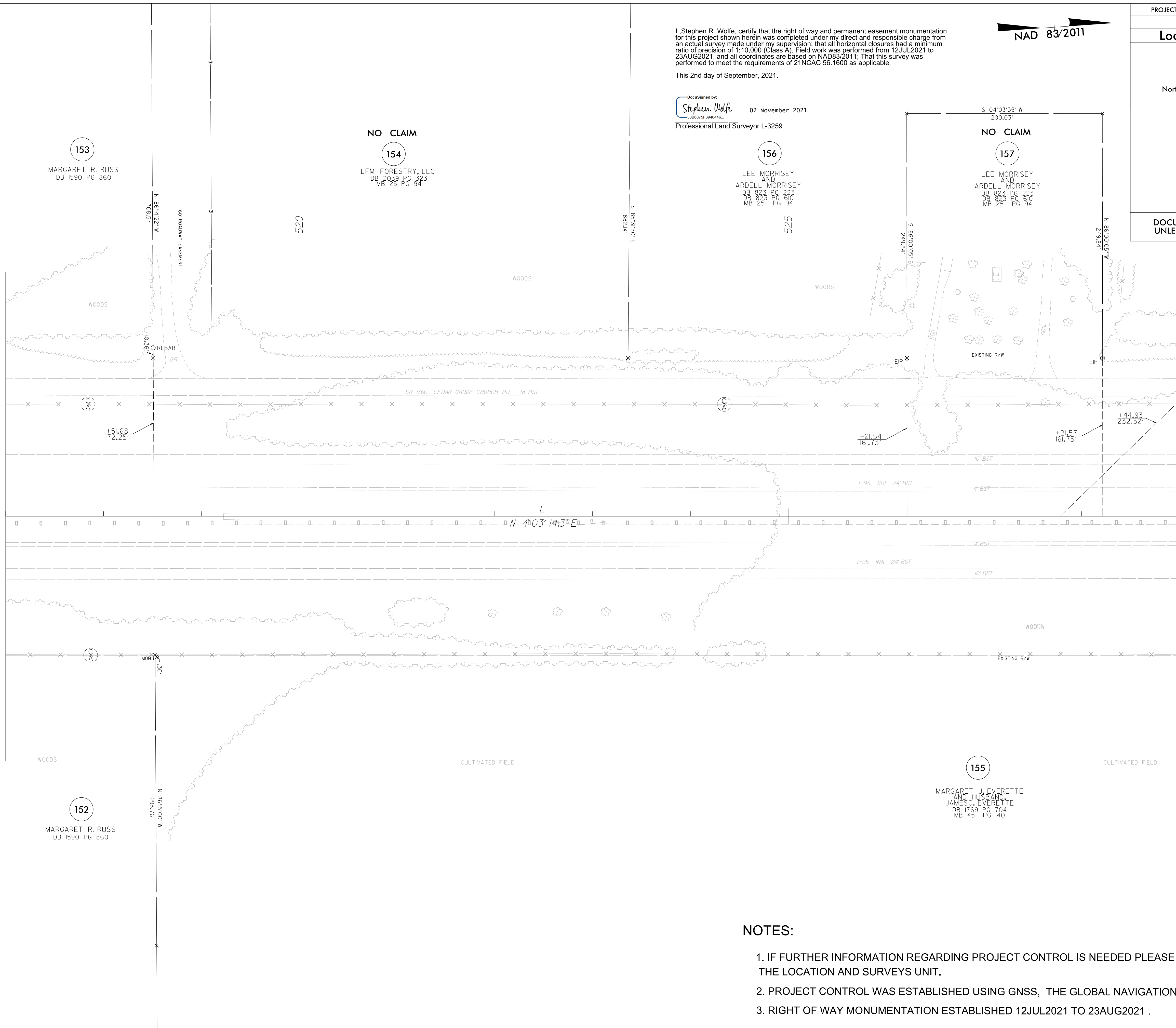
6/2/19

2: OCT 2021 11:17 AM 190035C_NCDOT_15987B_RW_Robeson\SURVEY\DCNN\WORK\RW\RW_series_sheets\15987b_1s_rw06.dgn
2: C:\Users\jmatthews\OneDrive\Documents\15987B_1s_rw06.dgn

REVISIONS

MATCHLINE -L- STA. 517 + 00.00 SEE SHEET NO. RW05

MATCHLINE -L- STA. 529 + 00.00 SEE SHEET NO. RW07



153
MARGARET R. RUSS
DB 1590 PG 860

NO CLAIM
154
LFM FORESTRY, LLC
DB 2039 PG 323
MB 25 PG 94

156
LEE MORRISEY
AND
ARDELL MORRISEY
DB 823 PG 223
DB 823 PG 610
MB 25 PG 94

NO CLAIM
157
LEE MORRISEY
AND
ARDELL MORRISEY
DB 823 PG 223
DB 823 PG 610
MB 25 PG 94

152
MARGARET R. RUSS
DB 1590 PG 860

155
MARGARET J. EVERETTE
AND HUSBAND
JAMES C. EVERETTE
DB 1769 PG 704
MB 45 PG 140

I, Stephen R. Wolfe, certify that the right of way and permanent easement monumentation for this project shown herein was completed under my direct and responsible charge from an actual survey made under my supervision; that all horizontal closures had a minimum ratio of precision of 1:10,000 (Class A). Field work was performed from 12JUL2021 to 23AUG2021, and all coordinates are based on NAD83/2011; That this survey was performed to meet the requirements of 21NCAC 56.1600 as applicable.
This 2nd day of September, 2021.

DocuSigned by:
Stephen Wolfe
02 November 2021
3066875F3940446
Professional Land Surveyor L-3259

NAD 83/2011

PROJECT REFERENCE NO. I-5987B	SHEET NO. RW06
Location and Surveys	
JoynerKeeny, PLLC 1051 N. Winstead Avenue Rocky Mount, NC 27804 252-977-3124 North Carolina Firm Number P-0551	
PROJECT SURVEYOR	
DOCUMENT NOT CONSIDERED FINAL UNLESS ALL SIGNATURES COMPLETED	

NOTES:

1. IF FURTHER INFORMATION REGARDING PROJECT CONTROL IS NEEDED PLEASE CONTACT THE LOCATION AND SURVEYS UNIT.
2. PROJECT CONTROL WAS ESTABLISHED USING GNSS, THE GLOBAL NAVIGATION SATELLITE SYSTEM.
3. RIGHT OF WAY MONUMENTATION ESTABLISHED 12JUL2021 TO 23AUG2021 .