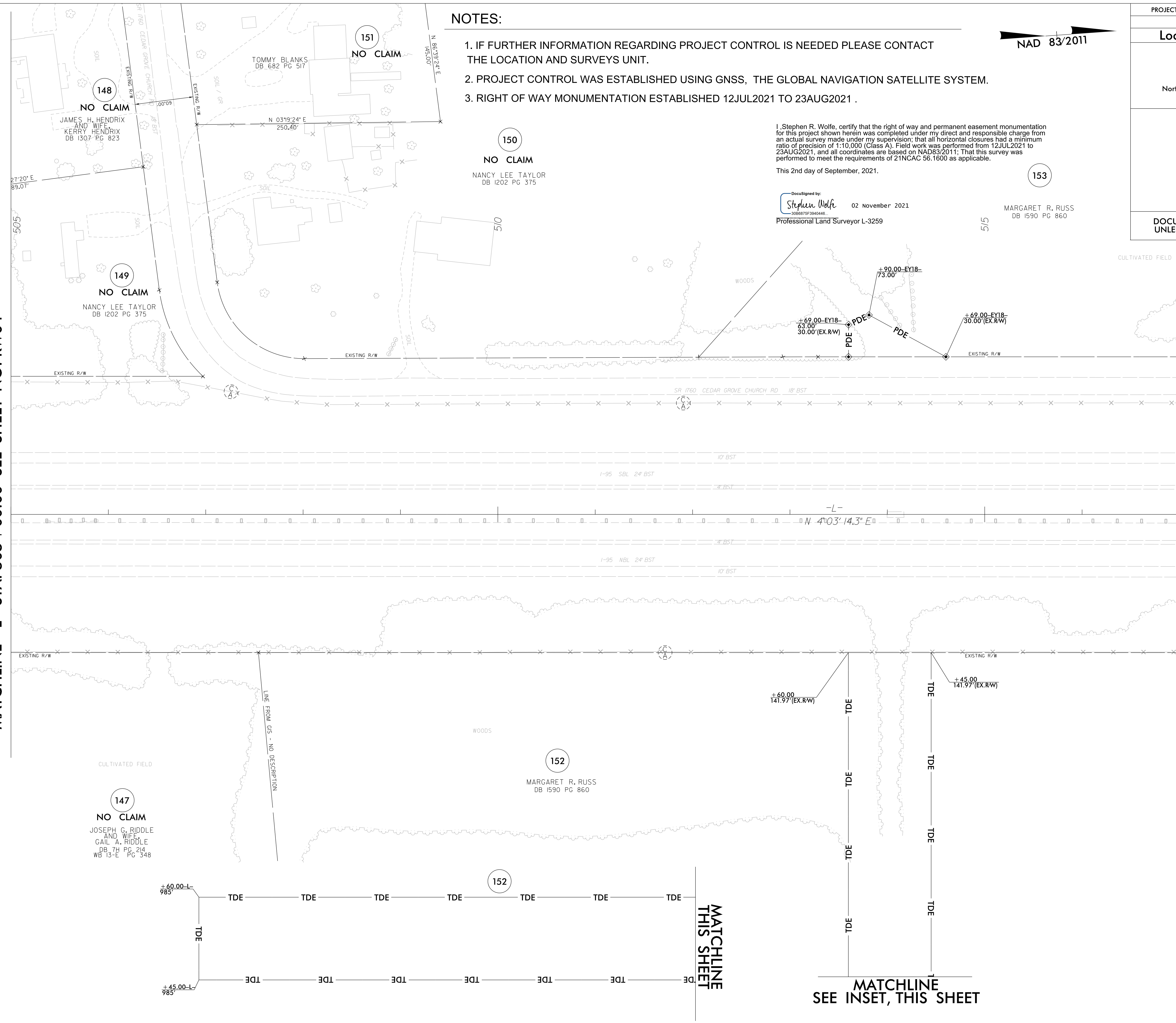


6/2/19

REVISIONS

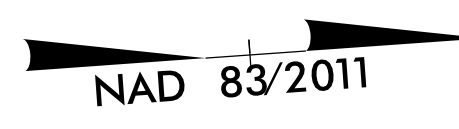
21-OCT-2021 11:17 190035C_NCDOT_15987B_RW_Robeson\SURVEY\DCGN\WORK\RW\RW_series_sheets\15987b_1s_rw05.dgn
21-OCT-2021 11:17 190035C_NCDOT_15987B_AT_JKA-042
jmatthews

MATCHLINE -L- STA. 505 + 00.00 SEE SHEET NO. RW04



NOTES:

1. IF FURTHER INFORMATION REGARDING PROJECT CONTROL IS NEEDED PLEASE CONTACT THE LOCATION AND SURVEYS UNIT.
2. PROJECT CONTROL WAS ESTABLISHED USING GNSS, THE GLOBAL NAVIGATION SATELLITE SYSTEM.
3. RIGHT OF WAY MONUMENTATION ESTABLISHED 12JUL2021 TO 23AUG2021 .

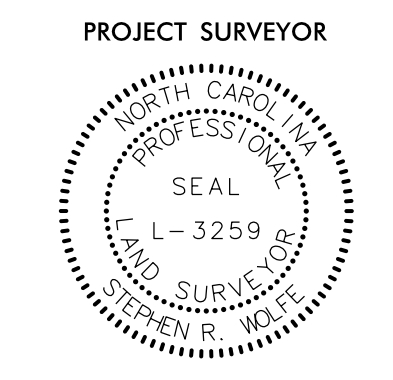


I, Stephen R. Wolfe, certify that the right of way and permanent easement monumentation for this project shown herein was completed under my direct and responsible charge from an actual survey made under my supervision; that all horizontal closures had a minimum ratio of precision of 1:10,000 (Class A). Field work was performed from 12JUL2021 to 23AUG2021, and all coordinates are based on NAD83/2011; That this survey was performed to meet the requirements of 21NCAC 56.1600 as applicable.

This 2nd day of September, 2021.

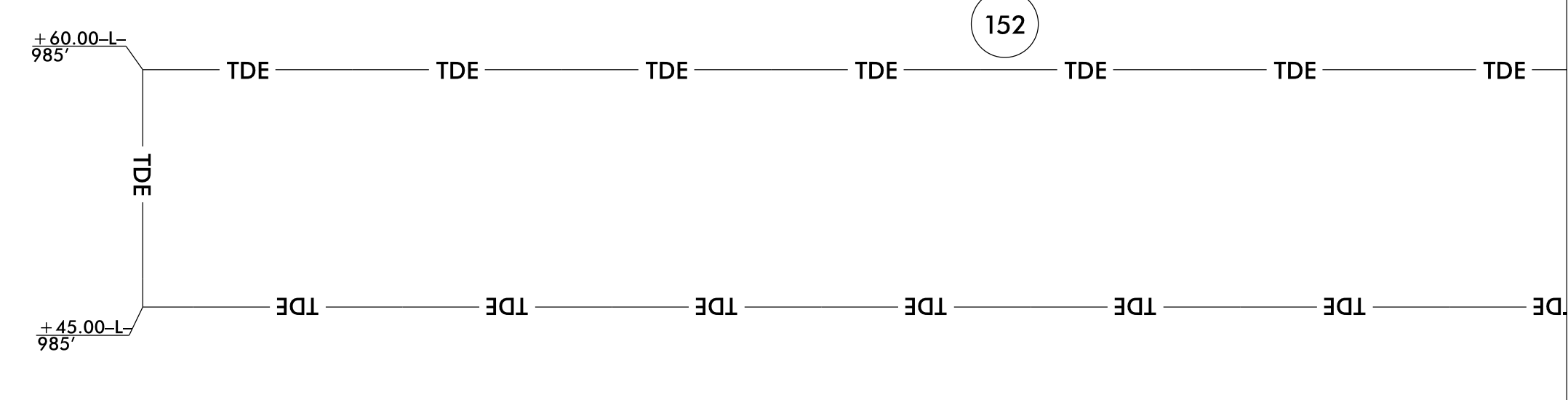
DocuSigned by:
Stephen Wolfe
02 November 2021
3006657F3940446
Professional Land Surveyor L-3259

MARGARET R. RUSS
DB 1590 PG 860



DOCUMENT NOT CONSIDERED FINAL
UNLESS ALL SIGNATURES COMPLETED

MATCHLINE -L- STA. 517 + 00.00 SEE SHEET NO. RW06



MATCHLINE THIS SHEET

MATCHLINE SEE INSET, THIS SHEET