

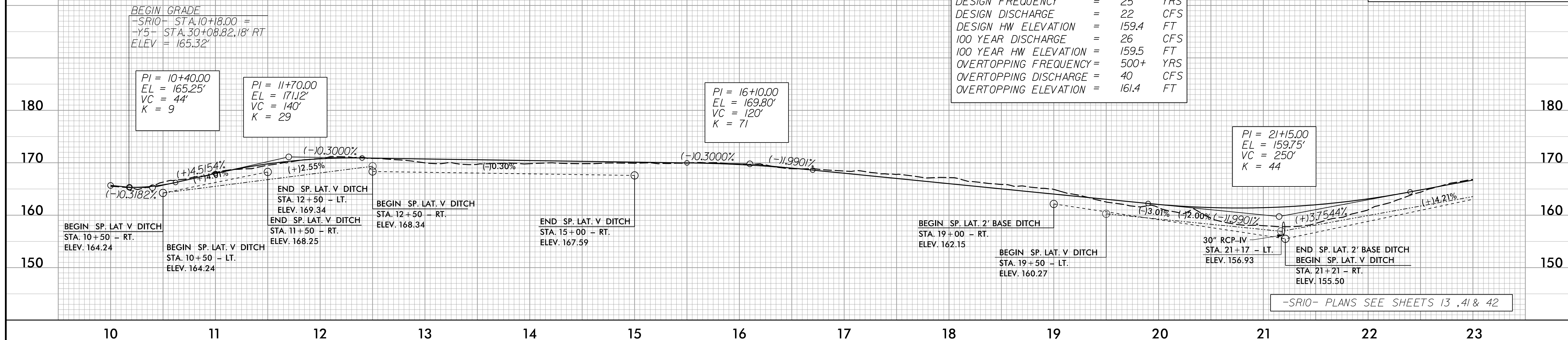
5/14/99

PROJECT REFERENCE NO. 1-5987B	SHEET NO. 101
ROADWAY DESIGN ENGINEER MOTT MACDONALD & E, LLC LICENSE NO. F-0669	HYDRAULICS ENGINEER MOTT MACDONALD & E, LLC LICENSE NO. F-0669
<b>DOCUMENT NOT CONSIDERED FINAL</b> <b>UNLESS ALL SIGNATURES COMPLETED</b>	
Prepared in the Office of:	<b>M</b> MOTT MACDONALD & E, LLC 7621 Purfoy Rd., Suite 115 Fuquay-Varina, NC 27526 www.mottmac.com/americas

# -SR10-

**PIPE HYDRAULIC DATA**  
30" RCP-IV Sta. 21+19 -SR10-

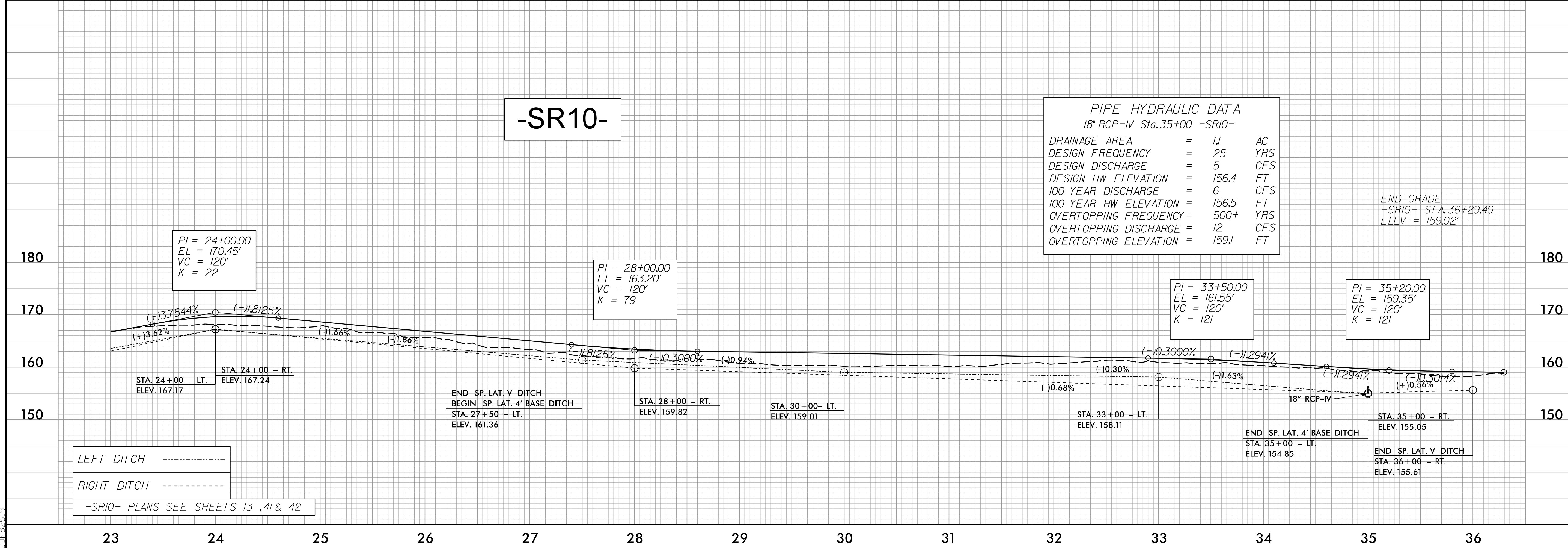
DRAINAGE AREA	=	6.7	AC
DESIGN FREQUENCY	=	25	YRS
DESIGN DISCHARGE	=	22	CFS
DESIGN HW ELEVATION	=	159.4	FT
100 YEAR DISCHARGE	=	26	CFS
100 YEAR HW ELEVATION	=	159.5	FT
OVERTOPPING FREQUENCY	=	500+	YRS
OVERTOPPING DISCHARGE	=	40	CFS
OVERTOPPING ELEVATION	=	161.4	FT



# -SR10-

**PIPE HYDRAULIC DATA**  
18" RCP-IV Sta. 35+00 -SR10-

DRAINAGE AREA	=	1.1	AC
DESIGN FREQUENCY	=	25	YRS
DESIGN DISCHARGE	=	5	CFS
DESIGN HW ELEVATION	=	156.4	FT
100 YEAR DISCHARGE	=	6	CFS
100 YEAR HW ELEVATION	=	156.5	FT
OVERTOPPING FREQUENCY	=	500+	YRS
OVERTOPPING DISCHARGE	=	12	CFS
OVERTOPPING ELEVATION	=	159.1	FT



4/18/2002  
P:\Projects\5987B\_rdy\_psh\_101.plt.dgn  
C:\Users\rdy\Documents\Projects\5987B\_rdy\_psh\_101.plt.dgn