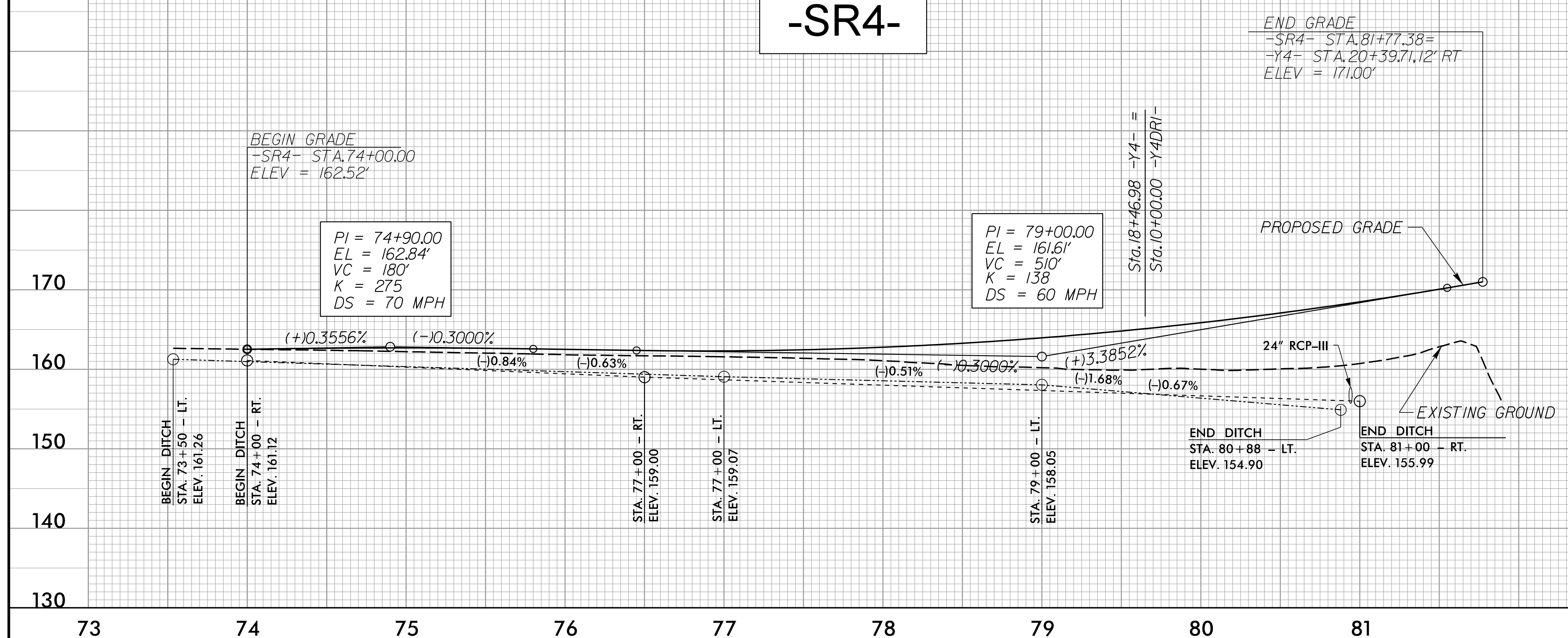


5/14/99

PROJECT REFERENCE NO. 1-5987B	SHEET NO. 100
ROADWAY DESIGN ENGINEER MOTT MACDONALD I & E, LLC LICENSE NO. F-0669	HYDRAULICS ENGINEER MOTT MACDONALD I & E, LLC LICENSE NO. F-0669
DOCUMENT NOT CONSIDERED FINAL UNLESS ALL SIGNATURES COMPLETED	
Prepared in the Office of:	

-SR4-

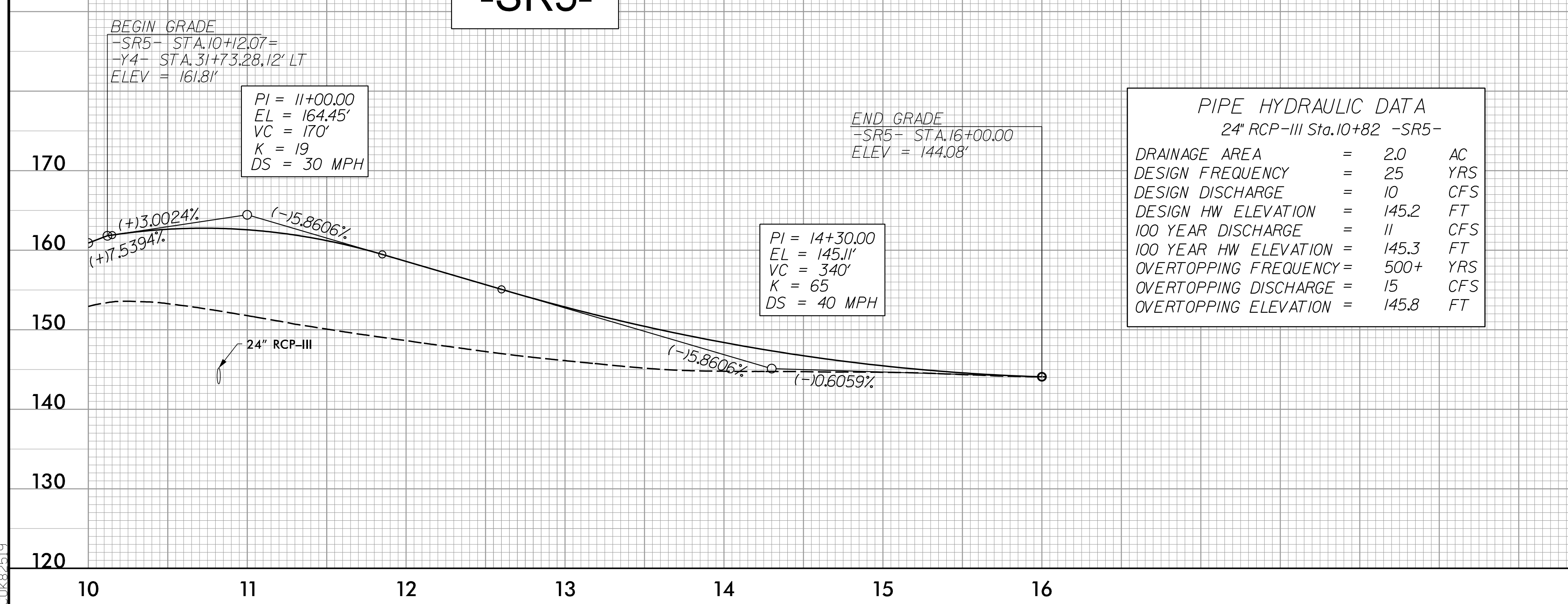


PIPE HYDRAULIC DATA
24" RCP-III Sta. 80+95 -SR4-

DRAINAGE AREA	=	21	AC
DESIGN FREQUENCY	=	25	YRS
DESIGN DISCHARGE	=	10	CFS
DESIGN HW ELEVATION	=	157.6	FT
100 YEAR DISCHARGE	=	11	CFS
100 YEAR HW ELEVATION	=	157.9	FT
OVERTOPPING FREQUENCY	=	500+	YRS
OVERTOPPING DISCHARGE	=	34	CFS
OVERTOPPING ELEVATION	=	162.5	FT

-SR4- PLANS SEE SHEETS 9 & 10

-SR5-



PIPE HYDRAULIC DATA
24" RCP-III Sta. 10+82 -SR5-

DRAINAGE AREA	=	2.0	AC
DESIGN FREQUENCY	=	25	YRS
DESIGN DISCHARGE	=	10	CFS
DESIGN HW ELEVATION	=	145.2	FT
100 YEAR DISCHARGE	=	11	CFS
100 YEAR HW ELEVATION	=	145.3	FT
OVERTOPPING FREQUENCY	=	500+	YRS
OVERTOPPING DISCHARGE	=	15	CFS
OVERTOPPING ELEVATION	=	145.8	FT

LEFT DITCH -----

RIGHT DITCH -----

-SR5- PLANS SEE SHEET 40

4/18/2002
F:\Projects\5987B\5987B_rdy_psh_100.pf1.dgn