

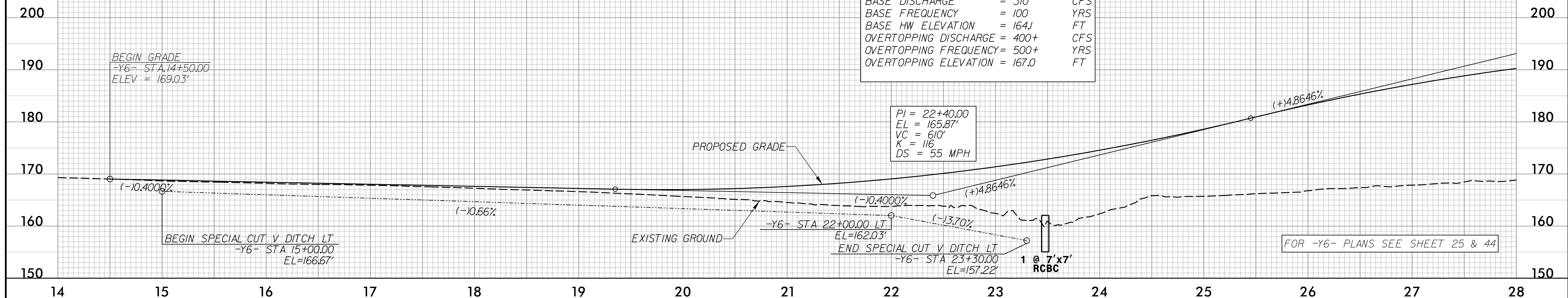
5/14/99

# -Y6-

PROJECT REFERENCE NO. 1-5987B	SHEET NO. 95
ROADWAY DESIGN ENGINEER MOTT MACDONALD 1 & E, LLC LICENSE NO. F-0669	HYDRAULICS ENGINEER WETHERILL ENGINEERING, LLC LICENSE NO. F-0377
<p><b>DOCUMENT NOT CONSIDERED FINAL</b> <b>UNLESS ALL SIGNATURES COMPLETED</b></p>	
<p>Prepared in the Office of:</p> <p>MOTT MACDONALD 7621 Purfoy Rd., Suite 115 Fayetteville, NC 27526 www.mottmac.com/america</p>	
<p>1223 Jones Franklin Rd. Salem, NC 27066 License No. F-0377 Phone: 919 851 8077 Fax: 919 851 8107</p>	

**CULVERT HYDRAULIC DATA**

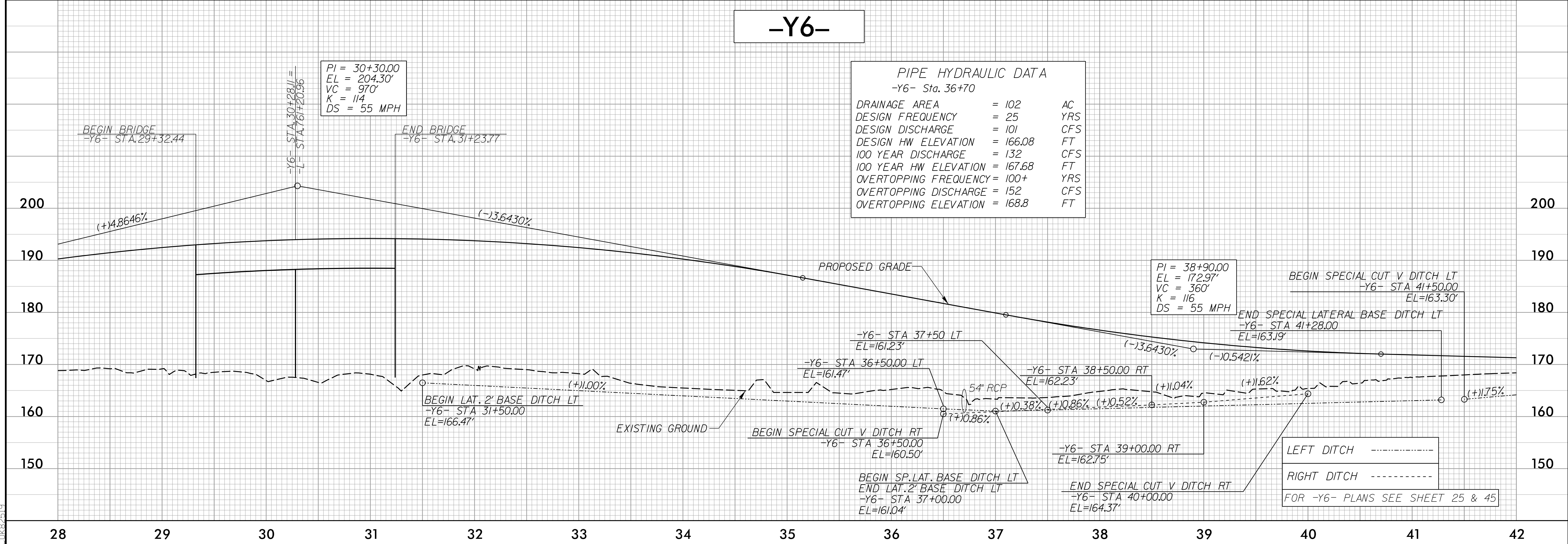
DESIGN DISCHARGE	= 230	CFS
DESIGN FREQUENCY	= 25	YRS
DESIGN HW ELEVATION	= 162.8	FT
BASE DISCHARGE	= 310	CFS
BASE FREQUENCY	= 100	YRS
BASE HW ELEVATION	= 164.1	FT
OVERTOPPING DISCHARGE	= 400+	CFS
OVERTOPPING FREQUENCY	= 500+	YRS
OVERTOPPING ELEVATION	= 167.0	FT



# -Y6-

**PIPE HYDRAULIC DATA**  
-Y6- Sta. 36+70

DRAINAGE AREA	= 102	AC
DESIGN FREQUENCY	= 25	YRS
DESIGN DISCHARGE	= 101	CFS
DESIGN HW ELEVATION	= 166.08	FT
100 YEAR DISCHARGE	= 132	CFS
100 YEAR HW ELEVATION	= 167.68	FT
OVERTOPPING FREQUENCY	= 100+	YRS
OVERTOPPING DISCHARGE	= 152	CFS
OVERTOPPING ELEVATION	= 168.8	FT



4/16/2002  
F:\Projects\5987B\Proj\5987B\_rdy\_psh\_95\_p1.dgn  
DWG: 2519