

5/14/99

Prepared in the Office of:

MOTT MACDONALD 7521 Purfoy Rd., Suite 115 Fuquay-Varina, NC 27526 www.mottmac.com/americas

PROJECT REFERENCE NO. 1-5987B

SHEET NO. 84



DOCUMENT NOT CONSIDERED FINAL UNLESS ALL SIGNATURES COMPLETED

PIPE HYDRAULIC DATA
36" RCP-III Sta.16+73 -Y4-

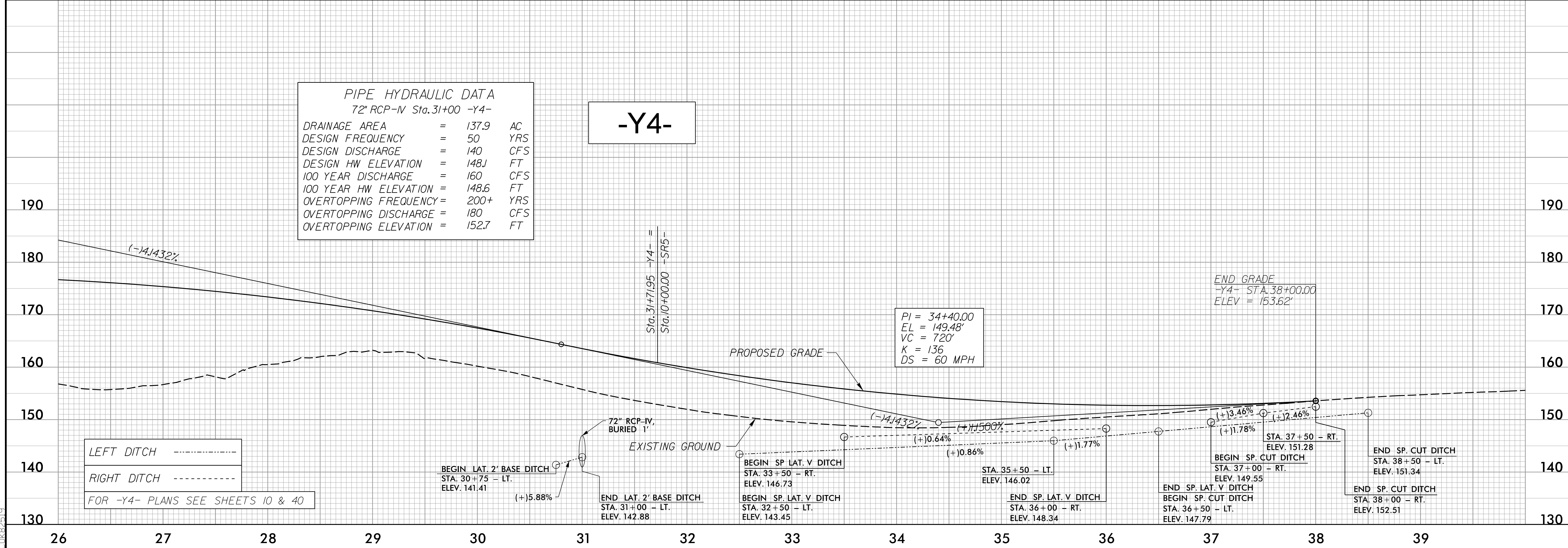
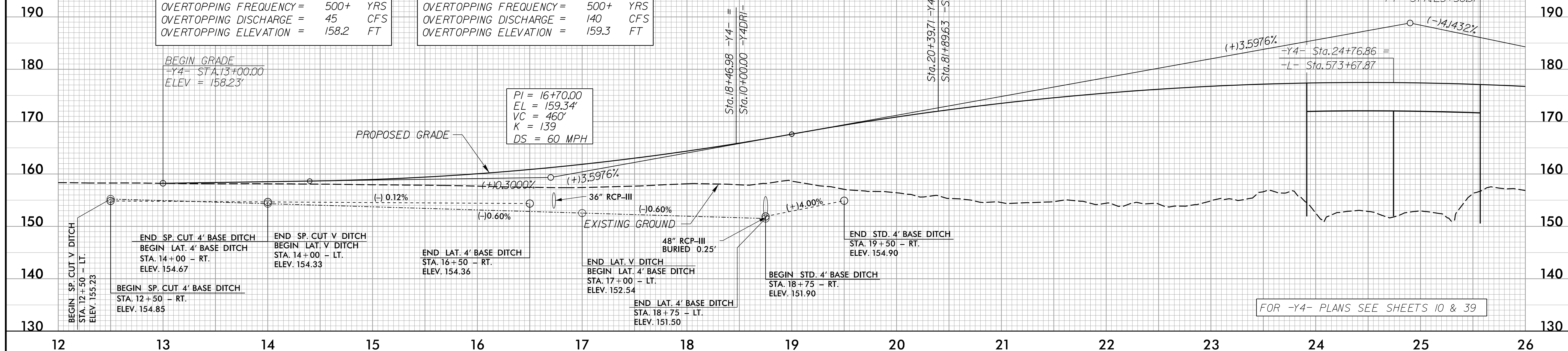
DRAINAGE AREA	=	8.3	AC
DESIGN FREQUENCY	=	50	YRS
DESIGN DISCHARGE	=	33	CFS
DESIGN HW ELEVATION	=	157.2	FT
100 YEAR DISCHARGE	=	35	CFS
100 YEAR HW ELEVATION	=	157.3	FT
OVERTOPPING FREQUENCY	=	500+	YRS
OVERTOPPING DISCHARGE	=	45	CFS
OVERTOPPING ELEVATION	=	158.2	FT

PIPE HYDRAULIC DATA
48" RCP-III Sta.18+75 -Y4-

DRAINAGE AREA	=	16.3	AC
DESIGN FREQUENCY	=	50	YRS
DESIGN DISCHARGE	=	61	CFS
DESIGN HW ELEVATION	=	155.8	FT
100 YEAR DISCHARGE	=	65	CFS
100 YEAR HW ELEVATION	=	156.0	FT
OVERTOPPING FREQUENCY	=	500+	YRS
OVERTOPPING DISCHARGE	=	140	CFS
OVERTOPPING ELEVATION	=	159.3	FT

-Y4-

PI = 24+90.00
EL = 188.84'
VC = 1,180'
K = 152
DS = 60 MPH



PIPE HYDRAULIC DATA
72" RCP-IV Sta.31+00 -Y4-

DRAINAGE AREA	=	137.9	AC
DESIGN FREQUENCY	=	50	YRS
DESIGN DISCHARGE	=	140	CFS
DESIGN HW ELEVATION	=	148.1	FT
100 YEAR DISCHARGE	=	160	CFS
100 YEAR HW ELEVATION	=	148.6	FT
OVERTOPPING FREQUENCY	=	200+	YRS
OVERTOPPING DISCHARGE	=	180	CFS
OVERTOPPING ELEVATION	=	152.7	FT

-Y4-

PI = 34+40.00
EL = 149.48'
VC = 720'
K = 136
DS = 60 MPH

LEFT DITCH
RIGHT DITCH

FOR -Y4- PLANS SEE SHEETS 10 & 40

FOR -Y4- PLANS SEE SHEETS 10 & 39

4/16/2002
C:\Users\p10001\Documents\Projects\1-5987B_rdy_psh_84_p1.dgn