

5/14/99

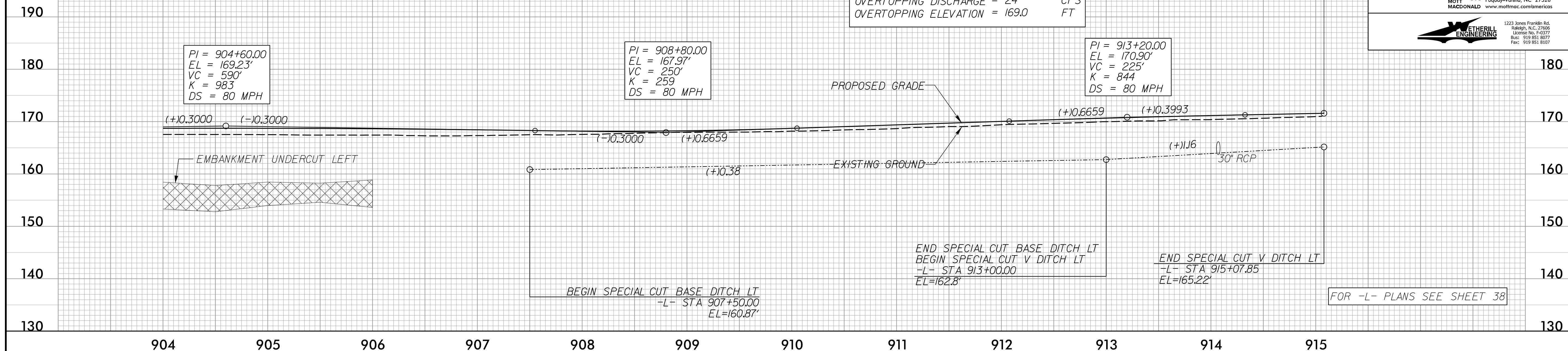
PROJECT REFERENCE NO. 1-5987B	SHEET NO. 83
ROADWAY DESIGN ENGINEER MOTT MACDONALD 1 & E, LLC LICENSE NO. F-0669	HYDRAULICS ENGINEER WETHERILL ENGINEERING, LLC LICENSE NO. F-0377
<p><b>DOCUMENT NOT CONSIDERED FINAL</b> <b>UNLESS ALL SIGNATURES COMPLETED</b></p>	
<p>Prepared in the Office of:</p> <p><b>M</b> MOTT MACDONALD 7621 Purfoy Road Fuquay-Varina, NC 27526 www.mottmac.com/americas</p>	
<p>1223 Jones Franklin Rd. Salem, NC 27066 License No. F-0377 Elev: 919 851 8077 Fax: 919 851 8107</p>	

# -L SB-

**PIPE HYDRAULIC DATA**  
-L- Sta. 914+06

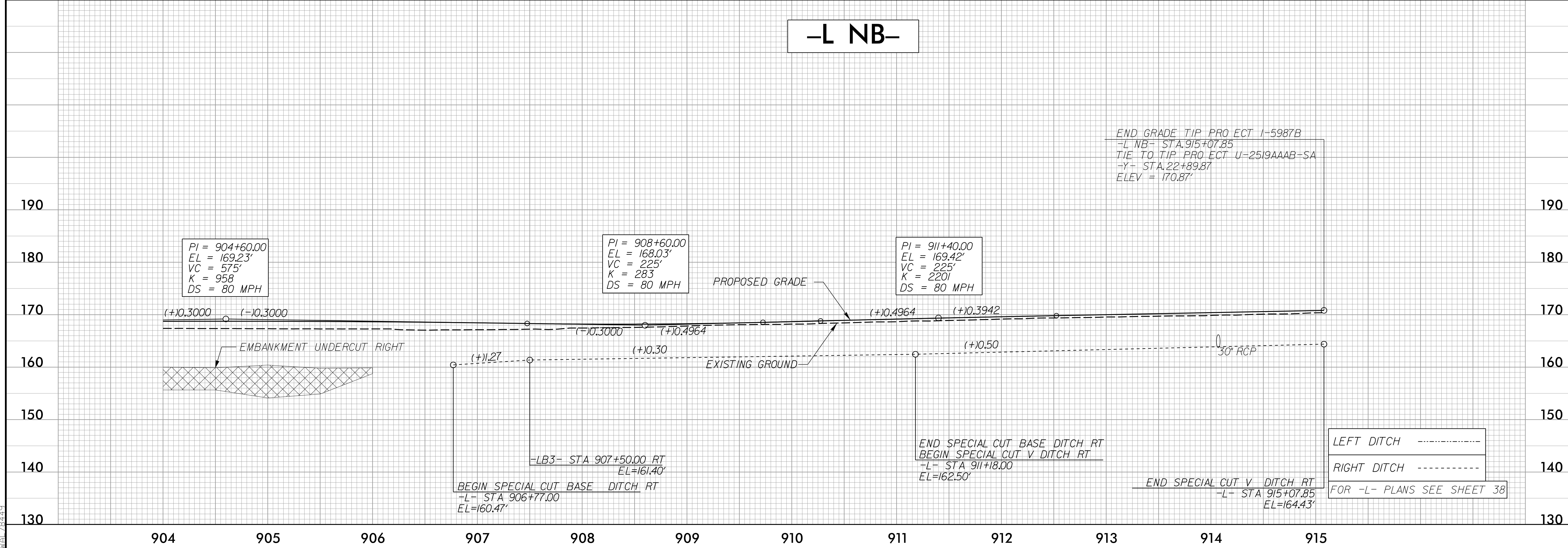
DRAINAGE AREA	= 5.0	AC
DESIGN FREQUENCY	= 100	YRS
DESIGN DISCHARGE	= 17.0	CFS
DESIGN HW ELEVATION	= 166.7	FT
100 YEAR DISCHARGE	= 17.0	CFS
100 YEAR HW ELEVATION	= 166.7	FT
OVERTOPPING FREQUENCY	= 500+	YRS
OVERTOPPING DISCHARGE	= 24	CFS
OVERTOPPING ELEVATION	= 169.0	FT

END GRADE TIP PROJECT 1-5987B  
-L SB- STA. 915+07.85  
TIE TO TIP PROJECT U-2519AAAB-SA  
-Y- STA. 22+89.87  
ELEV = 171.65'



# -L NB-

END GRADE TIP PROJECT 1-5987B  
-L NB- STA. 915+07.85  
TIE TO TIP PROJECT U-2519AAAB-SA  
-Y- STA. 22+89.87  
ELEV = 170.87'



F:\5\2022\1-5987B\1-5987B-L-rd\psh\_83.p\_dgn