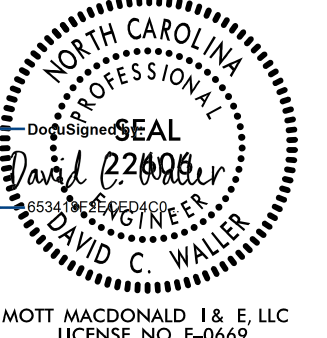





5/14/99

PROJECT REFERENCE NO. 1-5987B		SHEET NO. 82	
ROADWAY DESIGN ENGINEER		HYDRAULICS ENGINEER	
			
MOTT MACDONALD I & E, LLC LICENSE NO. F-0669		WETHERILL ENGINEERING, LLC LICENSE NO. F-0377	
DOCUMENT NOT CONSIDERED FINAL UNLESS ALL SIGNATURES COMPLETED			
Prepared in the Office of:		 7621 Purfoy Rd., Suite 115 Fuquay-Varina, NC 27526 www.mottmac.com/americas	
		 1223 Jones Franklin Rd. Salem, N.C. 27066 License No. F-0377 Bus: 919 851 8077 Fax: 919 851 8107	

-L_SB-

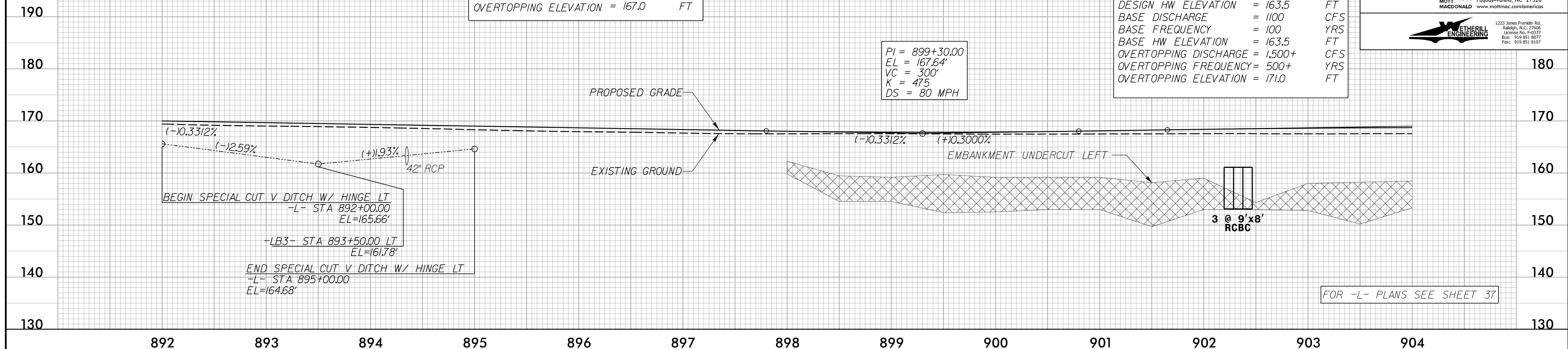
PIPE HYDRAULIC DATA
-L- Sta. 894+34

DRAINAGE AREA	= 7.0	AC
DESIGN FREQUENCY	= 100	YRS
DESIGN DISCHARGE	= 32.0	CFS
DESIGN HW ELEVATION	= 164.4	FT
100 YEAR DISCHARGE	= 32.0	CFS
100 YEAR HW ELEVATION	= 164.4	FT
OVERTOPPING FREQUENCY	= 500+/-	YRS
OVERTOPPING DISCHARGE	= 60	CFS
OVERTOPPING ELEVATION	= 167.0	FT

CULVERT HYDRAULIC DATA

DESIGN DISCHARGE	= 1100	CFS
DESIGN FREQUENCY	= 100	YRS
DESIGN HW ELEVATION	= 163.5	FT
BASE DISCHARGE	= 1100	CFS
BASE FREQUENCY	= 100	YRS
BASE HW ELEVATION	= 163.5	FT
OVERTOPPING DISCHARGE	= 1500+	CFS
OVERTOPPING FREQUENCY	= 500+	YRS
OVERTOPPING ELEVATION	= 171.0	FT

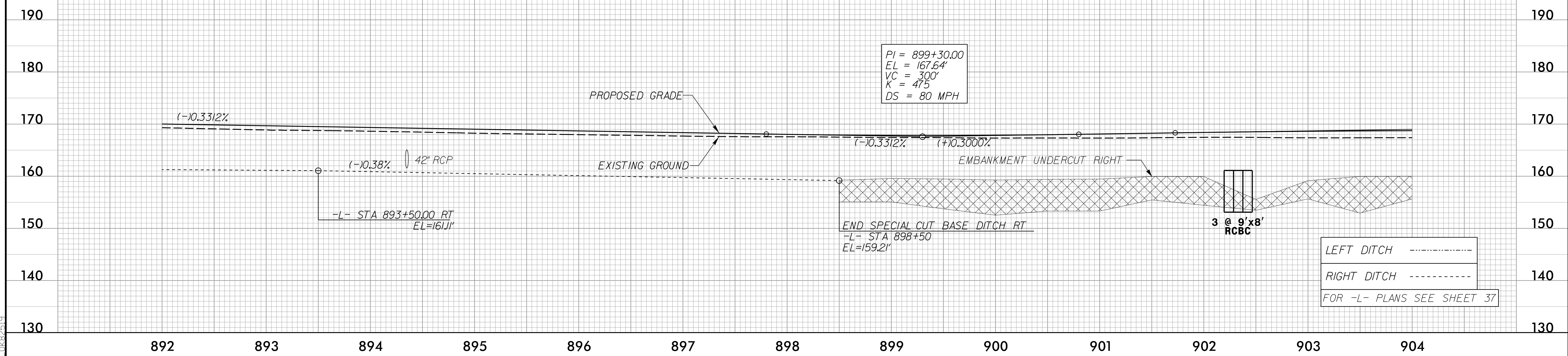
PI = 899+30.00
EL = 167.64'
VC = 300'
K = 475
DS = 80 MPH



FOR -L- PLANS SEE SHEET 37

-L_NB-

PI = 899+30.00
EL = 167.64'
VC = 300'
K = 475
DS = 80 MPH



LEFT DITCH -----
RIGHT DITCH -----
FOR -L- PLANS SEE SHEET 37

4/16/2002
F:\Projects\5987B\Proj\5987B_rdy_psh_82_pfl.dgn
DWG: 82819