
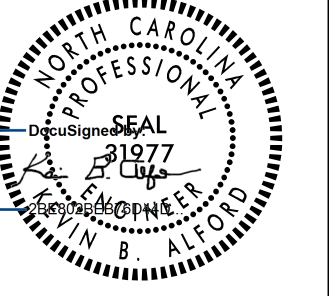



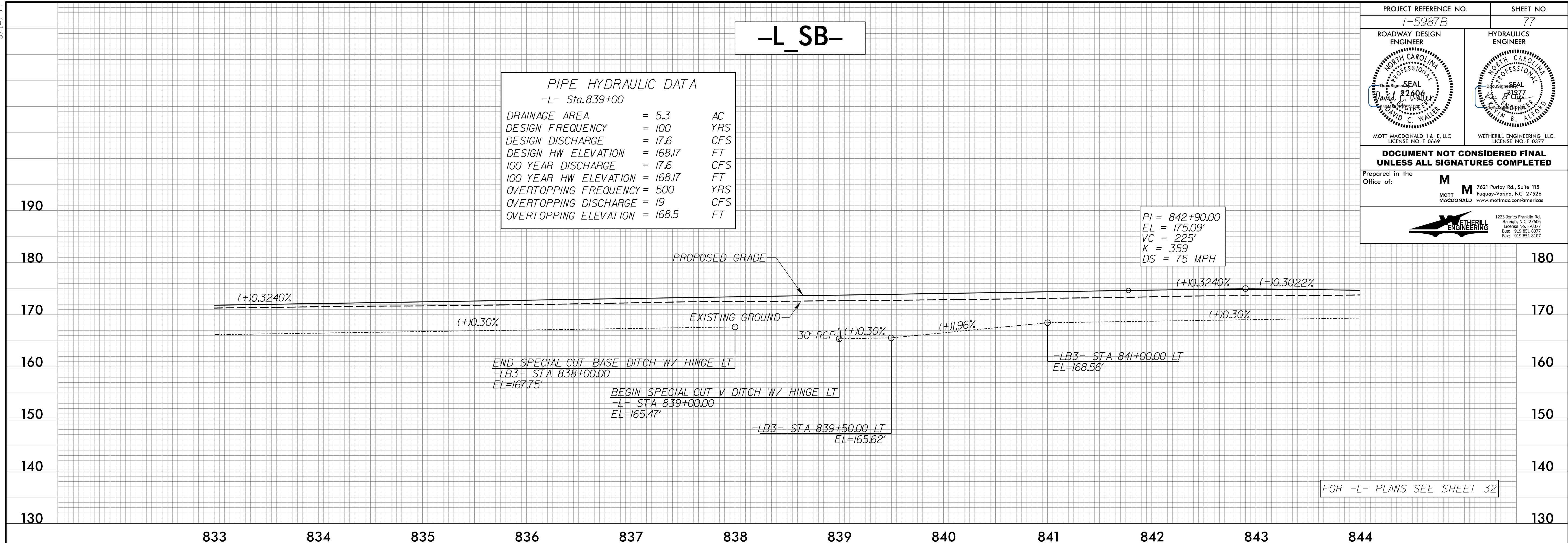
5/14/99

PROJECT REFERENCE NO. 1-5987B	SHEET NO. 77
ROADWAY DESIGN ENGINEER 	HYDRAULICS ENGINEER 
MOTT MACDONALD I & E, LLC LICENSE NO. F-0669	WETHERILL ENGINEERING, LLC LICENSE NO. F-0377
<b>DOCUMENT NOT CONSIDERED FINAL UNLESS ALL SIGNATURES COMPLETED</b>	
Prepared in the Office of:	<b>M</b> MOTT MACDONALD 7621 Purfoy Rd., Suite 115 Fuquay-Varina, NC 27526 www.mottmac.com/america
	

**PIPE HYDRAULIC DATA**  
-L- Sta. 839+00

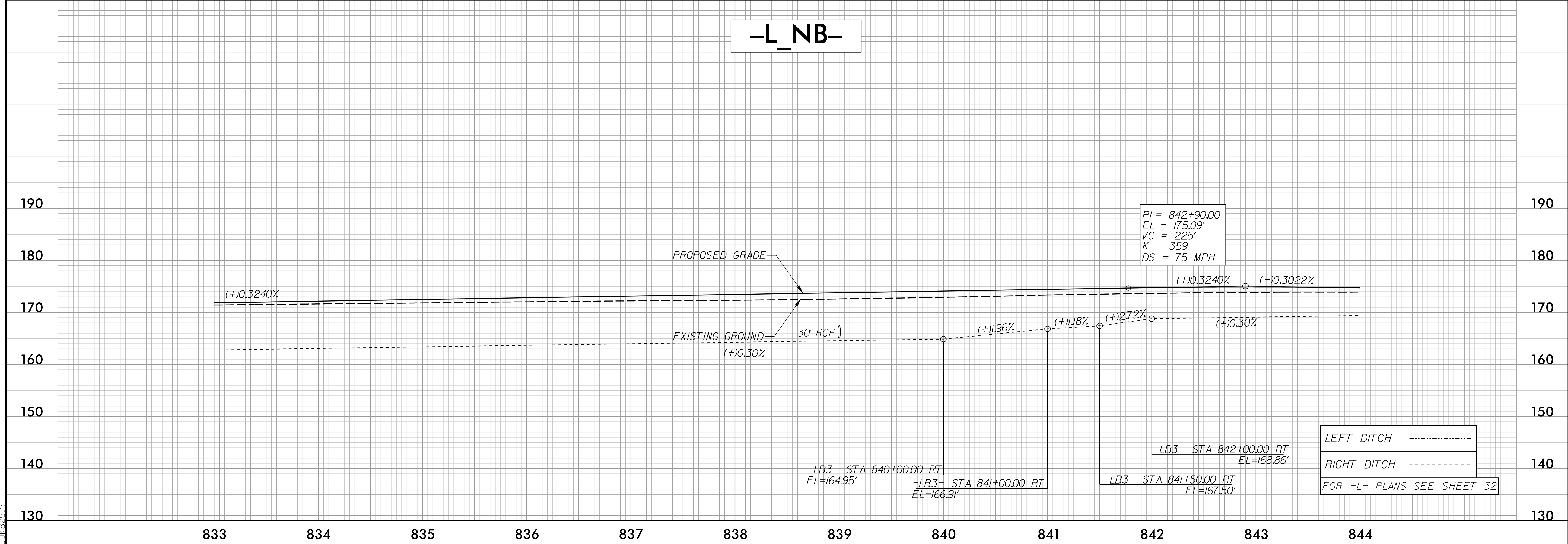
DRAINAGE AREA	= 5.3	AC
DESIGN FREQUENCY	= 100	YRS
DESIGN DISCHARGE	= 17.6	CFS
DESIGN HW ELEVATION	= 168.17	FT
100 YEAR DISCHARGE	= 17.6	CFS
100 YEAR HW ELEVATION	= 168.17	FT
OVERTOPPING FREQUENCY	= 500	YRS
OVERTOPPING DISCHARGE	= 19	CFS
OVERTOPPING ELEVATION	= 168.5	FT

PI = 842+90.00  
EL = 175.09'  
VC = 225'  
K = 359  
DS = 75 MPH



**-L\_NB-**

PI = 842+90.00  
EL = 175.09'  
VC = 225'  
K = 359  
DS = 75 MPH



4/16/2002  
F:\Projects\5987B\Proj\5987B\_rdy\_psh\_77.pfl.dgn  
C:\Users\jcw\Documents