

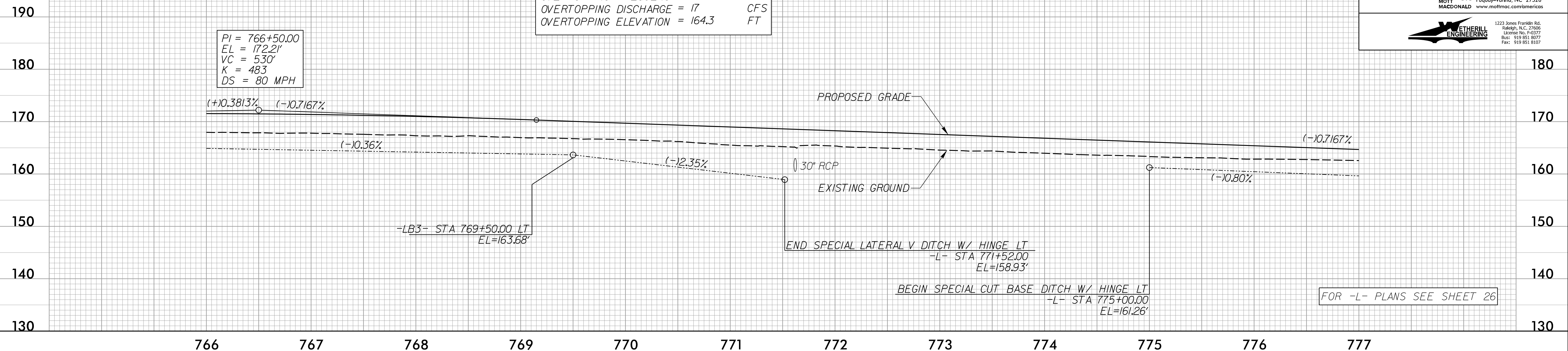
5/14/99

-L_SB-

PIPE HYDRAULIC DATA
-L- Sta. 771+62

DRAINAGE AREA	= 4.7	AC
DESIGN FREQUENCY	= 100	YRS
DESIGN DISCHARGE	= 17	CFS
DESIGN HW ELEVATION	= 164.3	FT
100 YEAR DISCHARGE	= 17	CFS
100 YEAR HW ELEVATION	= 164.3	FT
OVERTOPPING FREQUENCY	= 100	YRS
OVERTOPPING DISCHARGE	= 17	CFS
OVERTOPPING ELEVATION	= 164.3	FT

PI = 766+50.00
EL = 172.21'
VC = 5.30'
K = 483
DS = 80 MPH



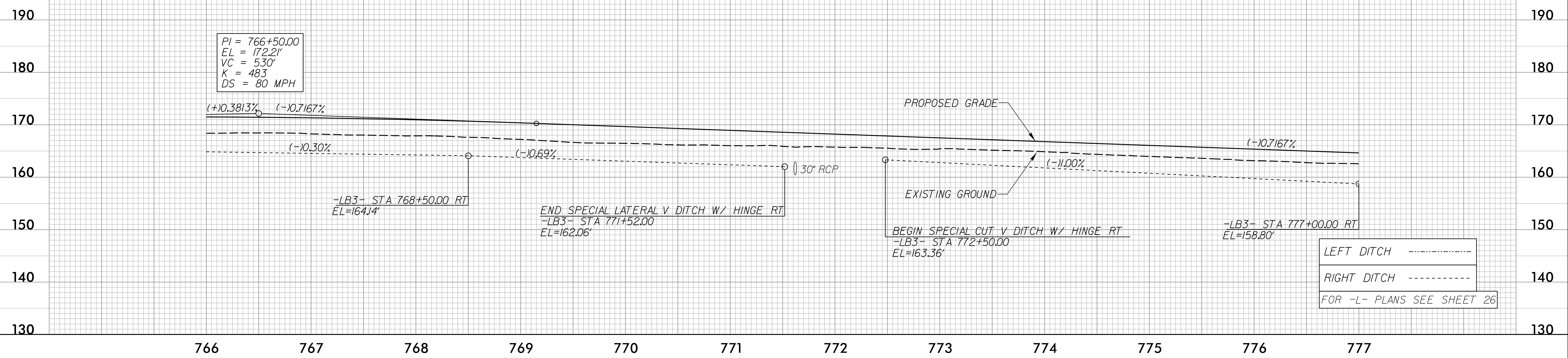
FOR -L- PLANS SEE SHEET 26

PROJECT REFERENCE NO. 1-5987B	SHEET NO. 71
ROADWAY DESIGN ENGINEER 	HYDRAULICS ENGINEER
MOTT MACDONALD I & E, LLC LICENSE NO. F-0669	WETHERILL ENGINEERING, LLC LICENSE NO. F-0377
DOCUMENT NOT CONSIDERED FINAL UNLESS ALL SIGNATURES COMPLETED	
Prepared in the Office of: M MOTT MACDONALD	
7621 Purfoy Rd., Suite 115 Fuquay-Varina, NC 27526 www.mottmac.com/americas	
1223 Jones Franklin Rd. Salisbury, NC 28136 License No. F-0377 Bus: 919 851 8077 Fax: 919 851 8107	

-L_NB-

BM#57 ELEV = 171.31'
TIE SPIKE SET IN 22" PINE
L STA 771+18 - 147' RT

PI = 766+50.00
EL = 172.21'
VC = 5.30'
K = 483
DS = 80 MPH



LEFT DITCH -----
RIGHT DITCH -----
FOR -L- PLANS SEE SHEET 26

4/18/2002
C:\Program Files\AutoCAD\Projects\1-5987B\rdj_psh_71.pfl.dgn