

5/28/99

BM#53 ELEV = 165.11'
TIE SPIKE SET IN 20' OAK
L STA 650+56 - 126' RT

-L- SB

PIPE HYDRAULIC DATA
-L- Sta.654+94

DRAINAGE AREA	= 65	AC
DESIGN FREQUENCY	= 100	YRS
DESIGN DISCHARGE	= 110	CFS
DESIGN HW ELEVATION	= 164.5	FT
100 YEAR DISCHARGE	= 110	CFS
100 YEAR HW ELEVATION	= 164.5	FT
OVERTOPPING FREQUENCY	= 500+	YRS
OVERTOPPING DISCHARGE	= 185	CFS
OVERTOPPING ELEVATION	= 168.0	FT

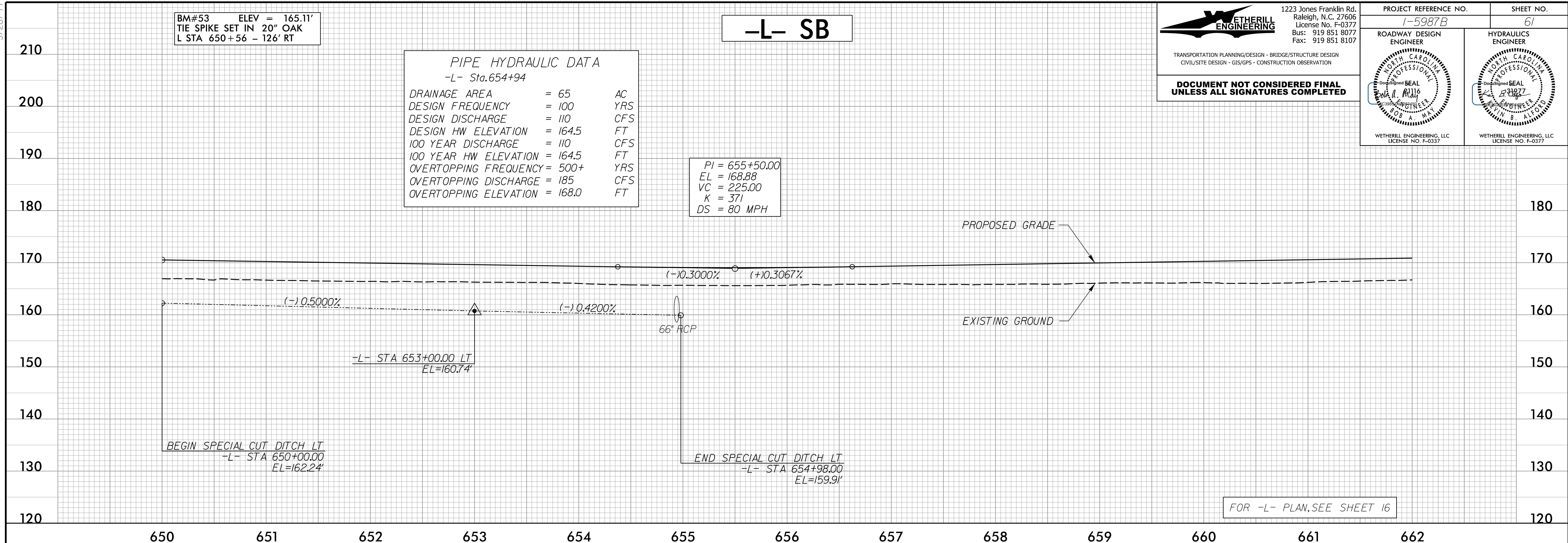
PI = 655+50.00
EL = 168.88
VC = 225.00
K = 371
DS = 80 MPH

WETHERILL ENGINEERING
1223 Jones Franklin Rd.
Raleigh, N.C. 27606
License No. F-0377
Bus: 919 851 8077
Fax: 919 851 8107

TRANSPORTATION PLANNING/DESIGN - BRIDGE/STRUCTURE DESIGN
CIVIL/SITE DESIGN - GIS/GPS - CONSTRUCTION OBSERVATION

**DOCUMENT NOT CONSIDERED FINAL
UNLESS ALL SIGNATURES COMPLETED**

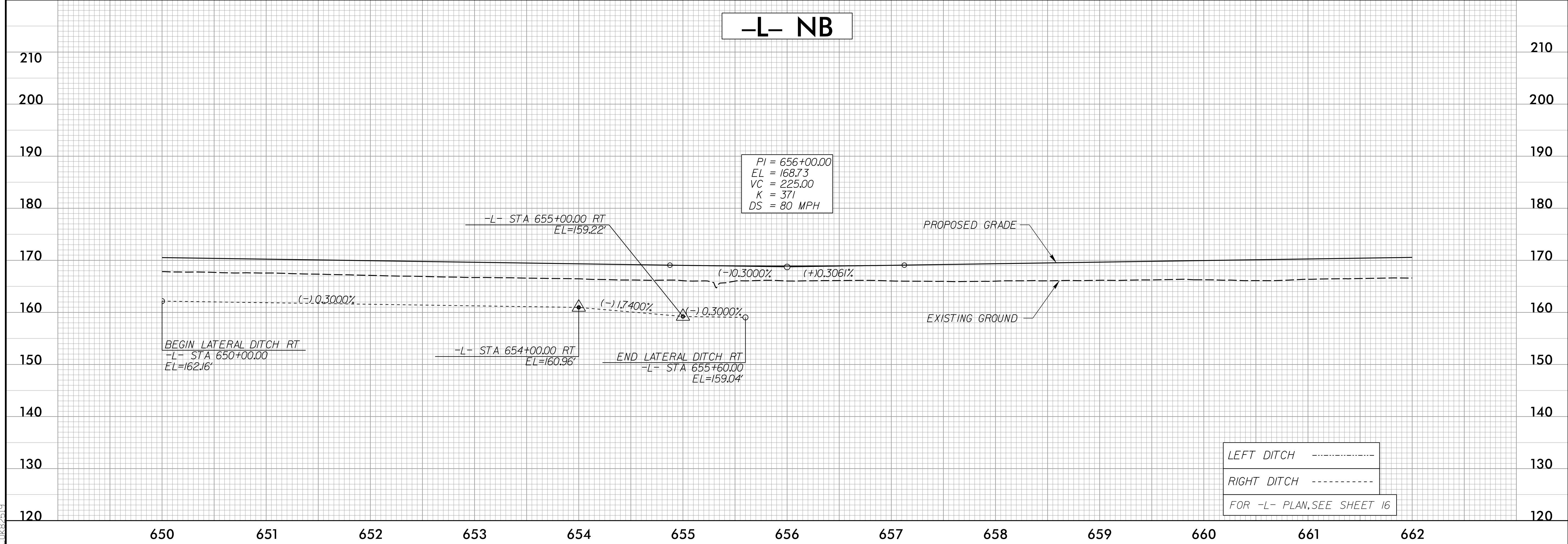
PROJECT REFERENCE NO. 1-5987B	SHEET NO. 61
ROADWAY DESIGN ENGINEER <i>[Signature]</i>	HYDRAULICS ENGINEER <i>[Signature]</i>
WETHERILL ENGINEERING, LLC LICENSE NO. F-0377	WETHERILL ENGINEERING, LLC LICENSE NO. F-0377



FOR -L- PLAN, SEE SHEET 16

-L- NB

PI = 656+00.00
EL = 168.73
VC = 225.00
K = 371
DS = 80 MPH



LEFT DITCH -----
RIGHT DITCH -----
FOR -L- PLAN, SEE SHEET 16

4/18/2002
F:\162016\162016\Proj\15987B_rdy_psh_61.pfl.dgn