

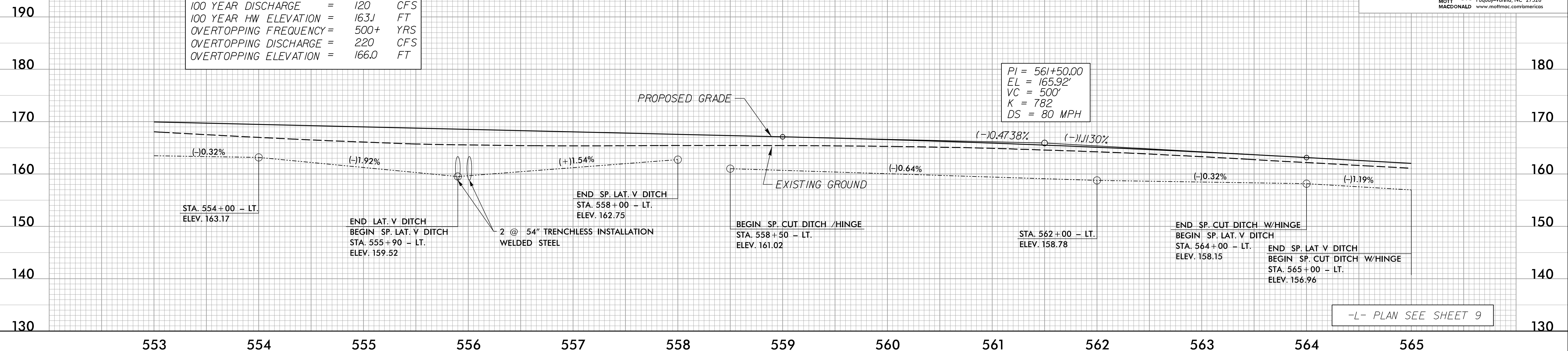
5/14/99

PROJECT REFERENCE NO. 1-5897B	SHEET NO. 53
ROADWAY DESIGN ENGINEER MOTT MACDONALD I & E, LLC LICENSE NO. F-0669	HYDRAULICS ENGINEER MOTT MACDONALD I & E, LLC LICENSE NO. F-0669
<p><b>DOCUMENT NOT CONSIDERED FINAL</b> <b>UNLESS ALL SIGNATURES COMPLETED</b></p>	
Prepared in the Office of:	<p><b>M</b> MOTT MACDONALD</p> <p>7621 Purfoy Rd., Suite 115 Fuquay-Varina, NC 27526 www.mottmcc.com/americas</p>

# -L\_SB-

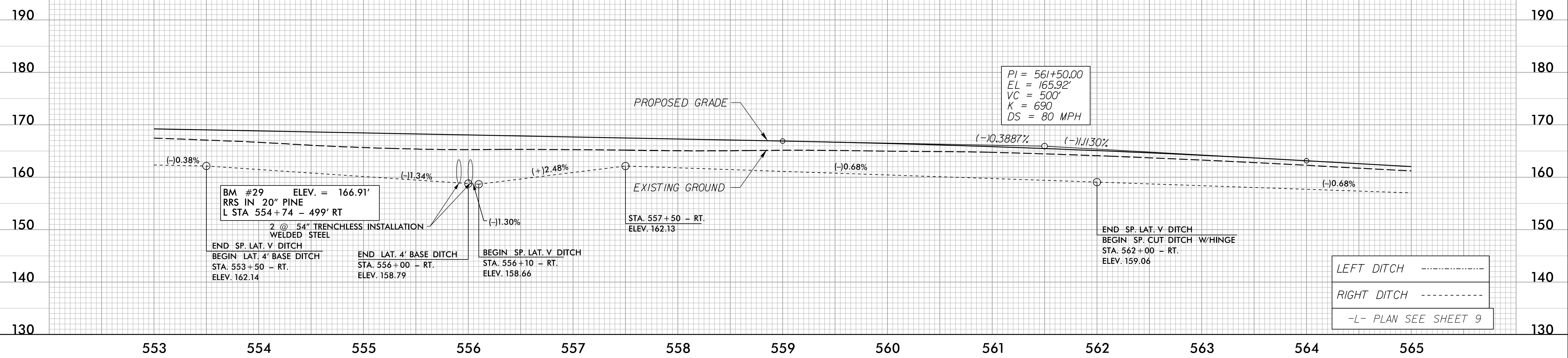
**PIPE HYDRAULIC DATA**  
2 @ 54" Trenchless Installation Welded Steel  
Sta. 555+97 -L-

DRAINAGE AREA	=	82.9	AC
DESIGN FREQUENCY	=	100	YRS
DESIGN DISCHARGE	=	120	CFS
DESIGN HW ELEVATION	=	163.1	FT
100 YEAR DISCHARGE	=	120	CFS
100 YEAR HW ELEVATION	=	163.1	FT
OVERTOPPING FREQUENCY	=	500+	YRS
OVERTOPPING DISCHARGE	=	220	CFS
OVERTOPPING ELEVATION	=	166.0	FT



# -L\_NB-

**BM #29** ELEV. = 166.91'  
 RRS IN 20" PINE  
 L STA 554+74 - 499' RT



4/16/2002  
F:\Projects\5897B\5897B\_rdy\_psh\_53.pfl.dwg  
C:\Users\rdy\Documents\Projects\5897B\5897B\_rdy\_psh\_53.pfl.dwg