

5/14/99

PROJECT REFERENCE NO. 1-5987B	SHEET NO. 48
ROADWAY DESIGN ENGINEER MOTT MACDONALD I & E, LLC LICENSE NO. F-0669	HYDRAULICS ENGINEER MOTT MACDONALD I & E, LLC LICENSE NO. F-0669

DOCUMENT NOT CONSIDERED FINAL
UNLESS ALL SIGNATURES COMPLETED

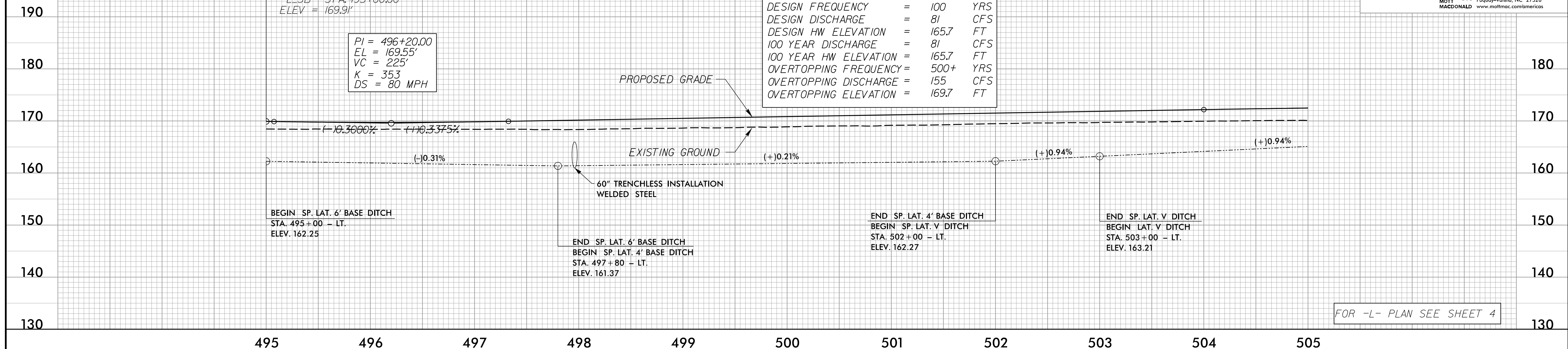
Prepared in the Office of: **M**
MOTT MACDONALD I & E, LLC
7621 Purfoy Rd., Suite 115
Fuquay-Varina, NC 27526
www.mottmcc.com/americas

-L_SB-

BEGIN GRADE TIP PROJECT 1-5987B
-L_SB- STA. 495+00.00
TIE TO TIP PROJECT 1-5987A
-L_SB- STA. 495+00.00
ELEV = 169.91'

PI = 496+20.00
EL = 169.55'
VC = 225'
K = 353
DS = 80 MPH

PIPE HYDRAULIC DATA	
60" Trenchless Installation Welded Steel	
Sta. 497+96 -L-	
DESIGN FREQUENCY	= 31.2 AC
DESIGN DISCHARGE	= 100 YRS
DESIGN HW ELEVATION	= 81 CFS
100 YEAR DISCHARGE	= 165.7 FT
100 YEAR HW ELEVATION	= 81 CFS
OVERTOPPING FREQUENCY	= 165.7 FT
OVERTOPPING DISCHARGE	= 500+ YRS
OVERTOPPING ELEVATION	= 155 CFS
	= 169.7 FT

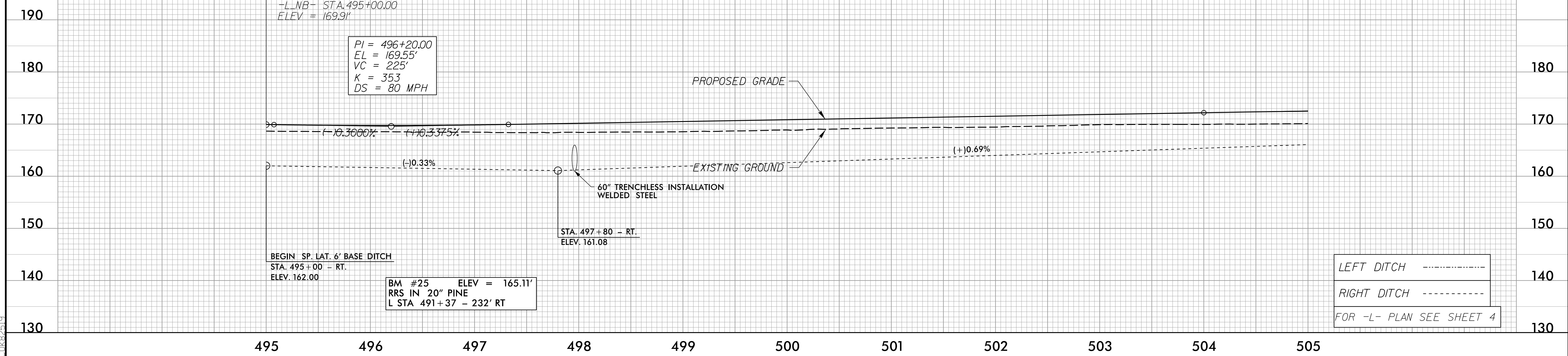


FOR -L- PLAN SEE SHEET 4

-L_NB-

BEGIN GRADE TIP PROJECT 1-5987B
-L_NB- STA. 495+00.00
TIE TO TIP PROJECT 1-5987A
-L_NB- STA. 495+00.00
ELEV = 169.91'

PI = 496+20.00
EL = 169.55'
VC = 225'
K = 353
DS = 80 MPH



LEFT DITCH -----
RIGHT DITCH -----
FOR -L- PLAN SEE SHEET 4

4/16/2002
F:\GIS\2002\1-5987B\1-5987B_rdy_psh_48.pfl.dgn
C:\Users\j... \AppData\Local\Temp\1-5987B_rdy_psh_48.pfl.dgn