

5/14/99

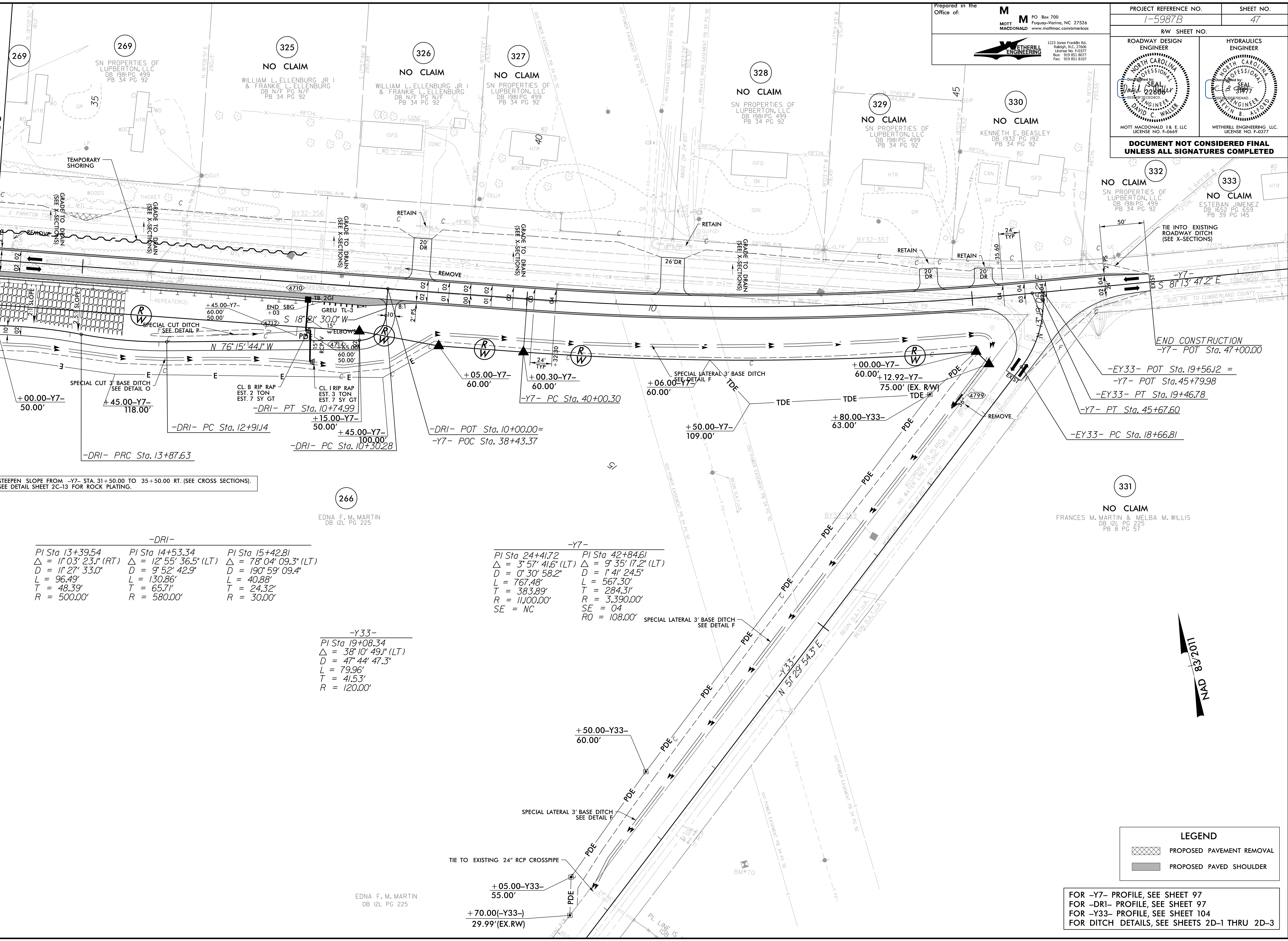
Prepared in the Office of:

**M M** PO Box 700  
Fuquay-Varina, NC 27526  
MOTT MACDONALD www.mottmac.com/americas

**WETHERILL ENGINEERING**  
1223 Jones Franklin Rd.  
Raleigh, N.C. 27606  
License No. 44377  
Buc. 919 851 8077  
Fax. 919 851 8107

PROJECT REFERENCE NO. <b>1-5987B</b>	SHEET NO. <b>47</b>
RW SHEET NO.	
ROADWAY DESIGN ENGINEER <b>DAVID C. WALKER</b>	HYDRAULICS ENGINEER <b>DAVID C. WALKER</b>
MOTT MACDONALD I & E, LLC LICENSE NO. F-0669	
WETHERILL ENGINEERING, LLC LICENSE NO. F-0377	
<b>DOCUMENT NOT CONSIDERED FINAL UNLESS ALL SIGNATURES COMPLETED</b>	

MATCHLINE -Y7- STA. 34 + 00.00 SEE SHEET NO. 36



STEEPEN SLOPE FROM -Y7- STA. 31+50.00 TO 35+50.00 RT. (SEE CROSS SECTIONS). SEE DETAIL SHEET 2C-13 FOR ROCK PLATING.

-DRI-		
PI Sta 13+39.54	PI Sta 14+53.34	PI Sta 15+42.81
$\Delta = 11^{\circ} 03' 23.1''$ (RT)	$\Delta = 12^{\circ} 55' 36.5''$ (LT)	$\Delta = 78^{\circ} 04' 09.3''$ (LT)
D = 11' 27' 33.0"	D = 9' 52' 42.9"	D = 190' 59' 09.4"
L = 96.49'	L = 130.86'	L = 40.88'
T = 48.39'	T = 65.71'	T = 24.32'
R = 500.00'	R = 580.00'	R = 30.00'

-Y33-
PI Sta 19+08.34
$\Delta = 38^{\circ} 10' 49.1''$ (LT)
D = 47' 44' 47.3"
L = 79.96'
T = 41.53'
R = 120.00'

-Y7-	
PI Sta 24+41.72	PI Sta 42+84.61
$\Delta = 3^{\circ} 57' 41.6''$ (LT)	$\Delta = 9^{\circ} 35' 17.2''$ (LT)
D = 0' 30' 58.2"	D = 1' 41' 24.5"
L = 767.48'	L = 567.30'
T = 383.89'	T = 284.31'
R = 11,000.00'	R = 3,390.00'
SE = NC	SE = 04
	RO = 108.00'

**LEGEND**

- PROPOSED PAYEMENT REMOVAL
- PROPOSED PAVED SHOULDER

FOR -Y7- PROFILE, SEE SHEET 97  
 FOR -DRI- PROFILE, SEE SHEET 97  
 FOR -Y33- PROFILE, SEE SHEET 104  
 FOR DITCH DETAILS, SEE SHEETS 2D-1 THRU 2D-3

R:\P\04\15987b\_rdy\_esh\_47.dgn 4/21/2022 10:58:14

EDNA F. M. MARTIN DB 12L PG 225