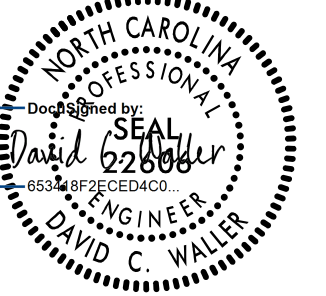
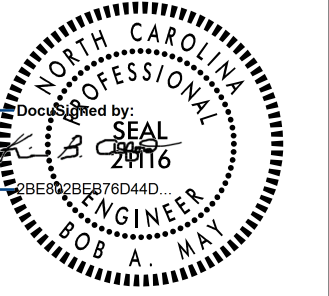

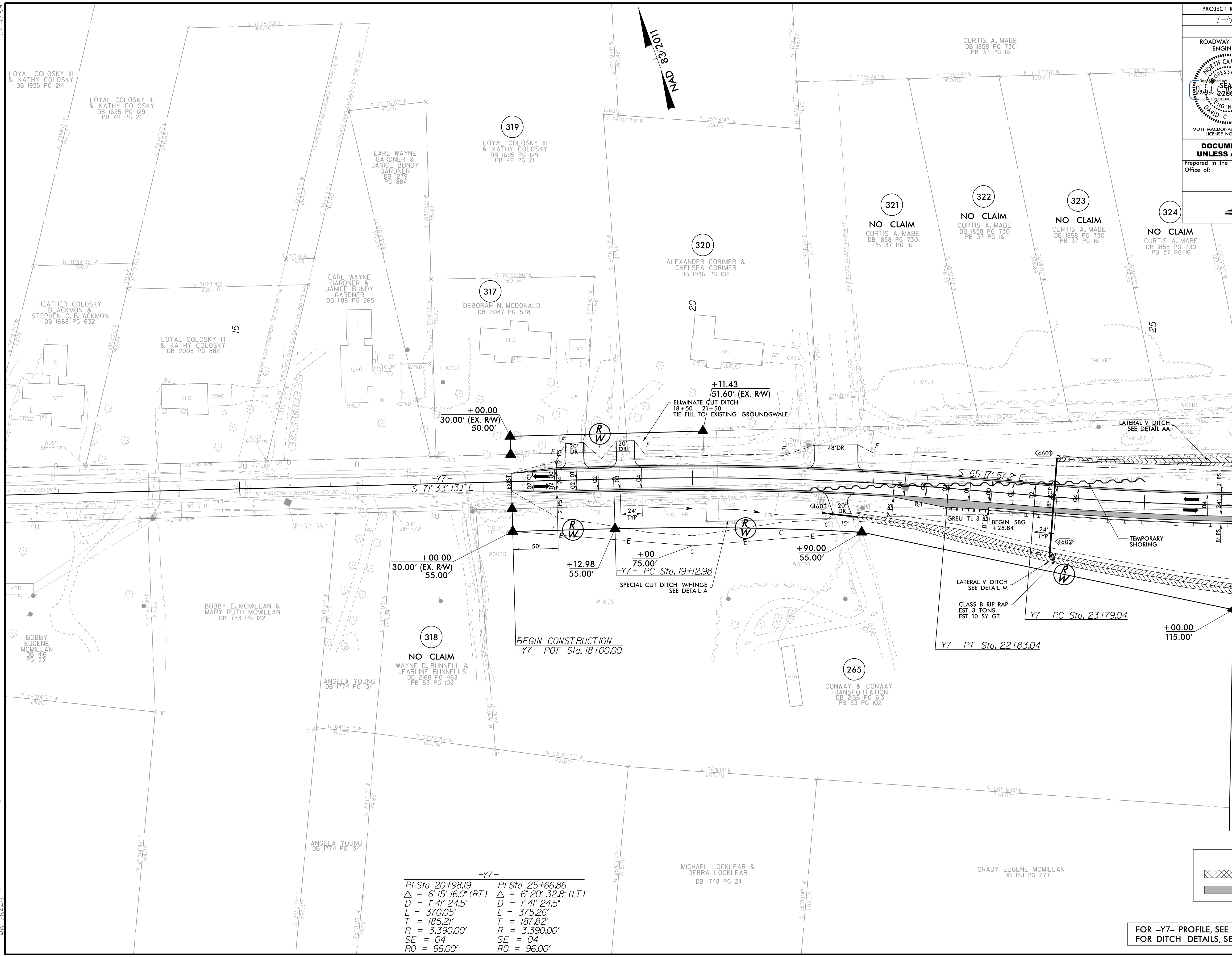


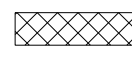

PROJECT REFERENCE NO. 1-5987B		SHEET NO. 46	
RW SHEET NO.			
ROADWAY DESIGN ENGINEER		HYDRAULICS ENGINEER	
			
MOTT MACDONALD I & E, LLC LICENSE NO. F-0669		WETHERILL ENGINEERING, LLC LICENSE NO. F-0377	
<p>DOCUMENT NOT CONSIDERED FINAL UNLESS ALL SIGNATURES COMPLETED</p>			
Prepared in the Office of:			
M		PO Box 700 Fuquay-Varina, NC 27526 MOTT MACDONALD www.mottmac.com/americas	
		1223 Jones Franklin Rd. Raleigh, N.C. 27606 License No. F-0377 Fax: 919 851 8077 Fax: 919 851 8107	

MATCHLINE -Y7- STA. 26 + 00.00 SEE SHEET NO. 36



-Y7-	
PI Sta 20+98.19	PI Sta 25+66.86
$\Delta = 6' 15'' 16.0''$ (RT)	$\Delta = 6' 20'' 32.8''$ (LT)
$D = 1' 41'' 24.5''$	$D = 1' 41'' 24.5''$
$L = 370.05'$	$L = 375.26'$
$T = 185.21'$	$T = 187.82'$
$R = 3,390.00'$	$R = 3,390.00'$
$SE = 04$	$SE = 04$
$RO = 96.00'$	$RO = 96.00'$

LEGEND

-  PROPOSED PAVEMENT REMOVAL
-  PROPOSED PAVED SHOULDER

FOR -Y7- PROFILE, SEE SHEET 96
 FOR DITCH DETAILS, SEE SHEETS 2D-1 THRU 2D-3

5/14/99
 4/21/2022
 R:\Projects\15987b_rdy_psh_46.dgn
 W:\Projects\15987b_rdy_psh_46.dgn