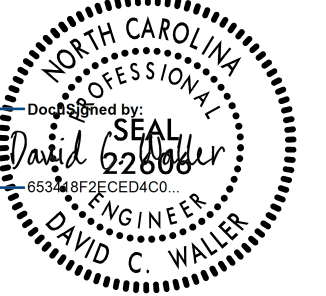
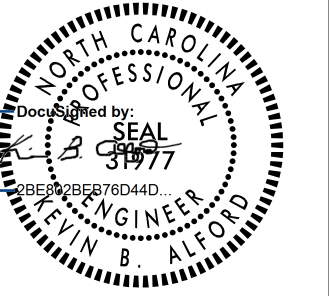
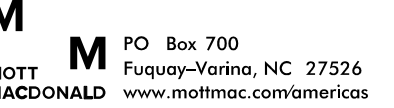

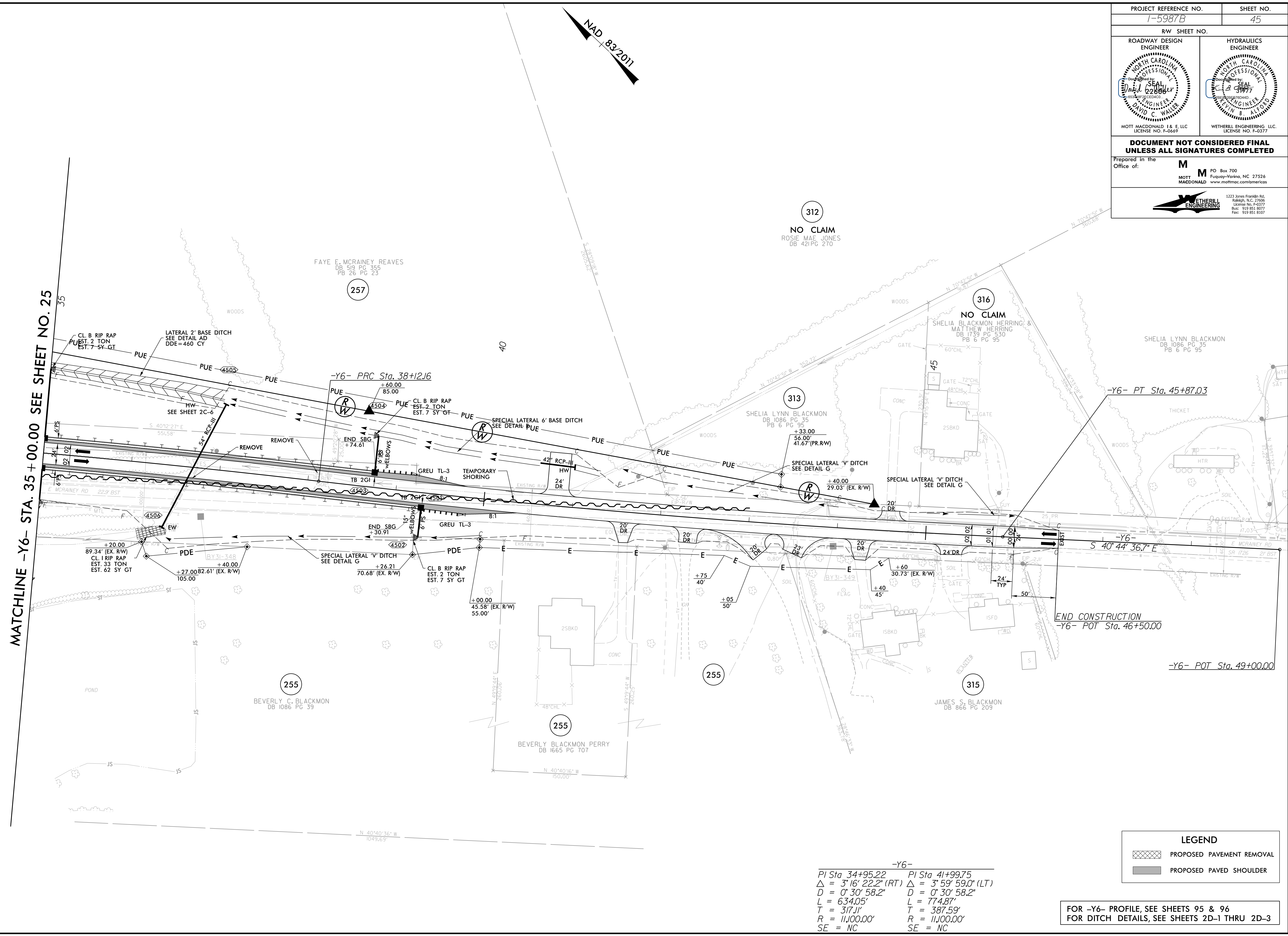


5/14/99
 R:\Projects\15987b\15987b_rdy_psh_45.dgn
 4/21/2022
 W:\Projects\15987b\15987b_rdy_psh_45.dgn

PROJECT REFERENCE NO. <i>1-5987B</i>		SHEET NO. 45	
ROADWAY DESIGN ENGINEER		HYDRAULICS ENGINEER	
			
MOTT MACDONALD I & E, LLC LICENSE NO. F-0669		WETHERILL ENGINEERING, LLC LICENSE NO. F-0377	
DOCUMENT NOT CONSIDERED FINAL UNLESS ALL SIGNATURES COMPLETED			
Prepared in the Office of:			
			

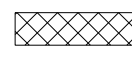



MATCHLINE -Y6- STA. 35 + 00.00 SEE SHEET NO. 25

-Y6-

PI Sta 34+95.22	PI Sta 41+99.75
$\Delta = 3' 16' 22.2''$ (RT)	$\Delta = 3' 59' 59.0''$ (LT)
$D = 0' 30' 58.2''$	$D = 0' 30' 58.2''$
$L = 634.05'$	$L = 774.87'$
$T = 317.11'$	$T = 387.59'$
$R = 11,100.00'$	$R = 11,100.00'$
$SE = NC$	$SE = NC$

LEGEND

	PROPOSED PAVEMENT REMOVAL
	PROPOSED PAVED SHOULDER

FOR -Y6- PROFILE, SEE SHEETS 95 & 96
 FOR DITCH DETAILS, SEE SHEETS 2D-1 THRU 2D-3