
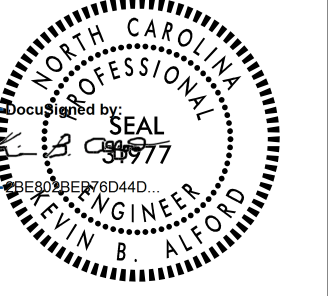
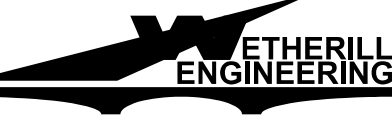
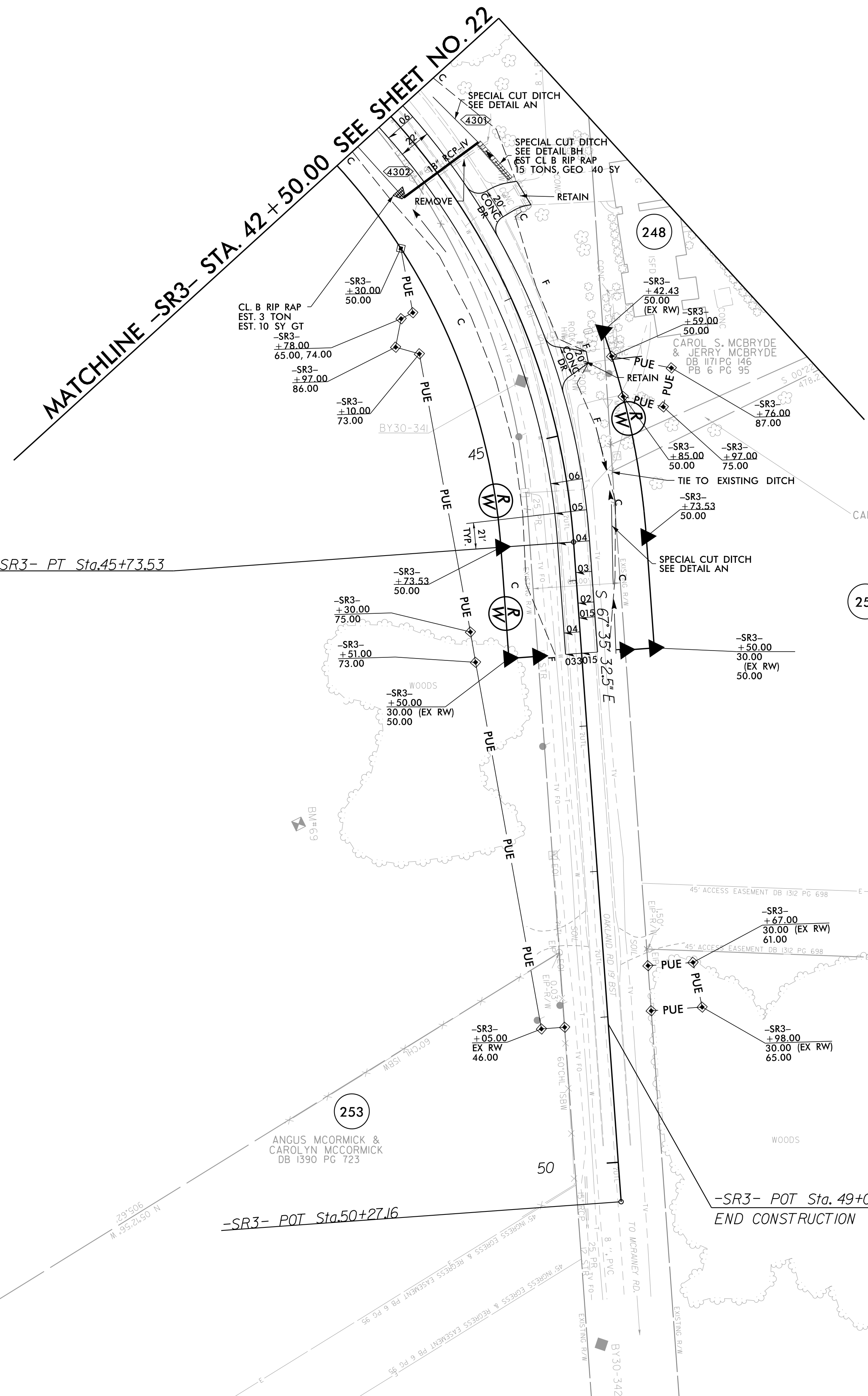




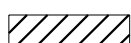
5/14/99

PROJECT REFERENCE NO. 1-5987B		SHEET NO. 43	
RW SHEET NO.			
ROADWAY DESIGN ENGINEER		HYDRAULICS ENGINEER	
			
DOCUMENT NOT CONSIDERED FINAL UNLESS ALL SIGNATURES COMPLETED			
		1223 Jones Franklin Rd. Raleigh, N.C. 27606 License No. F-0377 Bus: 919 851 8077 Fax: 919 851 8107	
TRANSPORTATION PLANNING/DESIGN - BRIDGE/STRUCTURE DESIGN CIVIL/SITE DESIGN - GIS/GPS - CONSTRUCTION OBSERVATION			



-SR3-
 PI STA. 43+01.14
 $\Delta = 81^\circ 52' 36.4''$ (RT)
 $D = 11' 48' 48.8''$
 $L = 693.07'$
 $T = 420.69'$
 $R = 485.00'$
 $SE = 0.06$
 $RO = \text{SEE PLANS}$

LEGEND

-  PROPOSED PAVEMENT REMOVAL
-  PROPOSED PAVED SHOULDER
-  PROPOSED APPROACH SLAB

FOR DITCH DETAILS SEE SHEETS D-1 THRU D-3

FOR -SR3- PROFILE SEE SHEETS 98 & 99

R:\P\4728\2022\01\5987B\rdj_psh_43.dgn