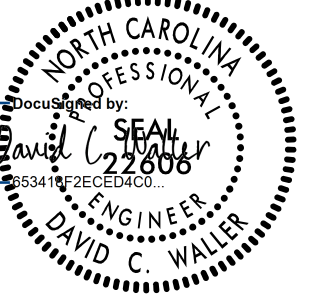
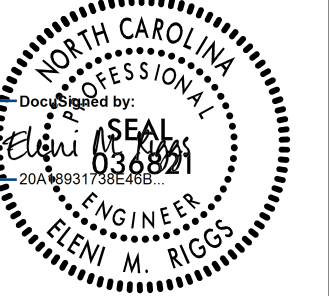

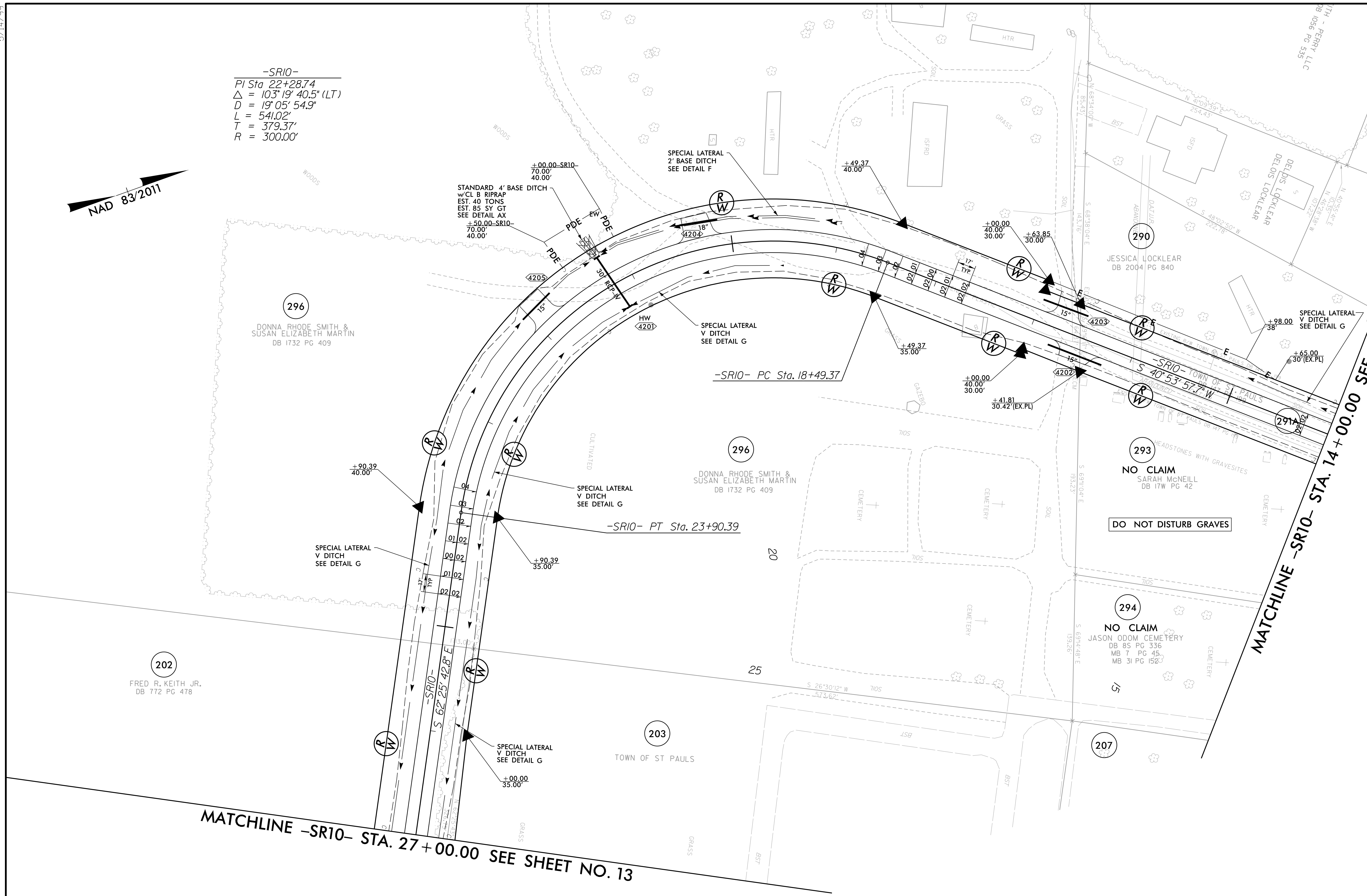
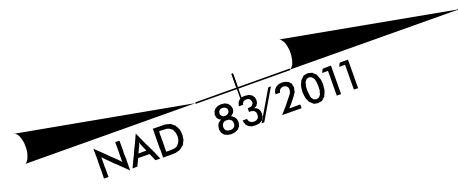


PROJECT REFERENCE NO. <i>1-5987B</i>		SHEET NO. <i>42</i>	
RW SHEET NO.			
ROADWAY DESIGN ENGINEER		HYDRAULICS ENGINEER	
 DAVID C. WALKER LICENSE NO. 22808		 GLENN W. REGG LICENSE NO. 036821	
MOTT MACDONALD I & E, LLC LICENSE NO. F-0669		MOTT MACDONALD I & E, LLC LICENSE NO. F-0669	
DOCUMENT NOT CONSIDERED FINAL UNLESS ALL SIGNATURES COMPLETED			
Prepared in the Office of:		 MOTT MACDONALD	
		7621 Purfoy Rd, Suite 115 Fuquay-Varina, NC 27526 www.mottmac.com/americas	

-SR10-
 PI Sta. 22+28.74
 $\Delta = 103^{\circ}19'40.5"$ (LT)
 $D = 19^{\circ}05'54.9"$
 $L = 541.02'$
 $T = 379.37'$
 $R = 300.00'$



MATCHLINE -SR10- STA. 27+00.00 SEE SHEET NO. 13

FOR -SR10- PROFILE, SEE SHEET 101
 FOR DITCH DETAILS, SEE SHEETS 2D-1 THRU 2D-3

4/21/2022
 R:\Projects\15987b_rdy_psh_42.dgn
 10:58:14