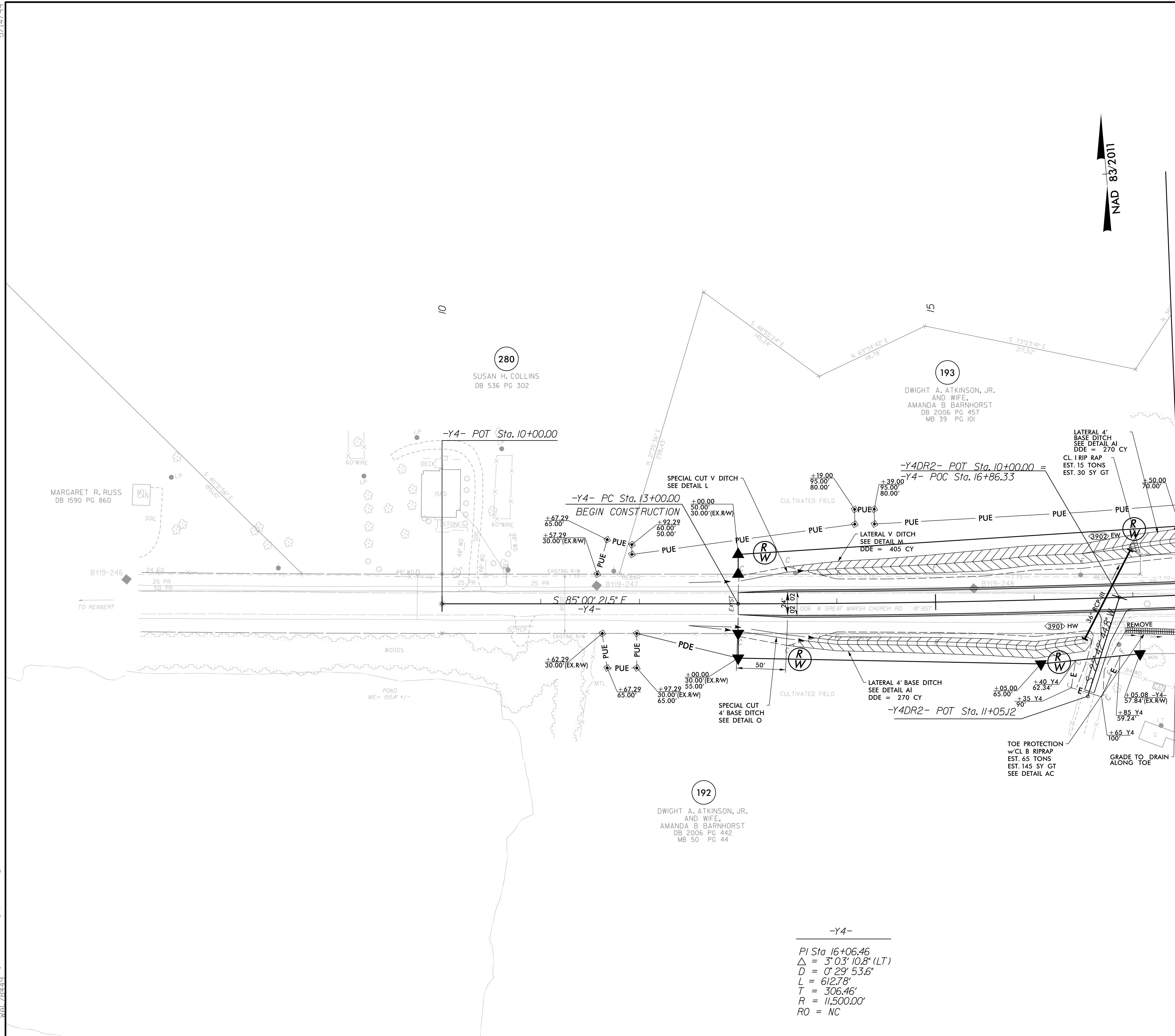


PROJECT REFERENCE NO. 1-5987B	SHEET NO. 39
RW SHEET NO.	
ROADWAY DESIGN ENGINEER DAVID C. YALLER NORTH CAROLINA PROFESSIONAL ENGINEER LICENSE NO. 22808	HYDRAULICS ENGINEER ALEX W. REGG NORTH CAROLINA PROFESSIONAL ENGINEER LICENSE NO. 036821
MOTT MACDONALD I & E, LLC LICENSE NO. F-0669	
DOCUMENT NOT CONSIDERED FINAL UNLESS ALL SIGNATURES COMPLETED	
Prepared in the Office of:	MOTT MACDONALD I & E, LLC 7621 Purfoy Rd, Suite 115 Fuquay-Varina, NC 27526 www.mottmac.com/americas

5/14/99

4/21/2022
R:\P\02\15987b\15987b_rdy_psh_39.dgn



MATCHLINE -Y4- STA. 17 + 50.00 SEE SHEET NO. 10

-Y4-
PI Sta. 16+06.46
Δ = 3° 03' 10.8" (LT)
D = 0' 29' 53.6"
L = 612.78'
T = 306.46'
R = 11,500.00'
RO = NC

LEGEND

PROPOSED PAVED SHOULDER

FOR -Y4- PROFILE, SEE SHEET 84
FOR -Y4DR2- PROFILE, SEE SHEET 102
FOR DITCH DETAILS, SEE SHEETS 2D-1 THRU 2D-3