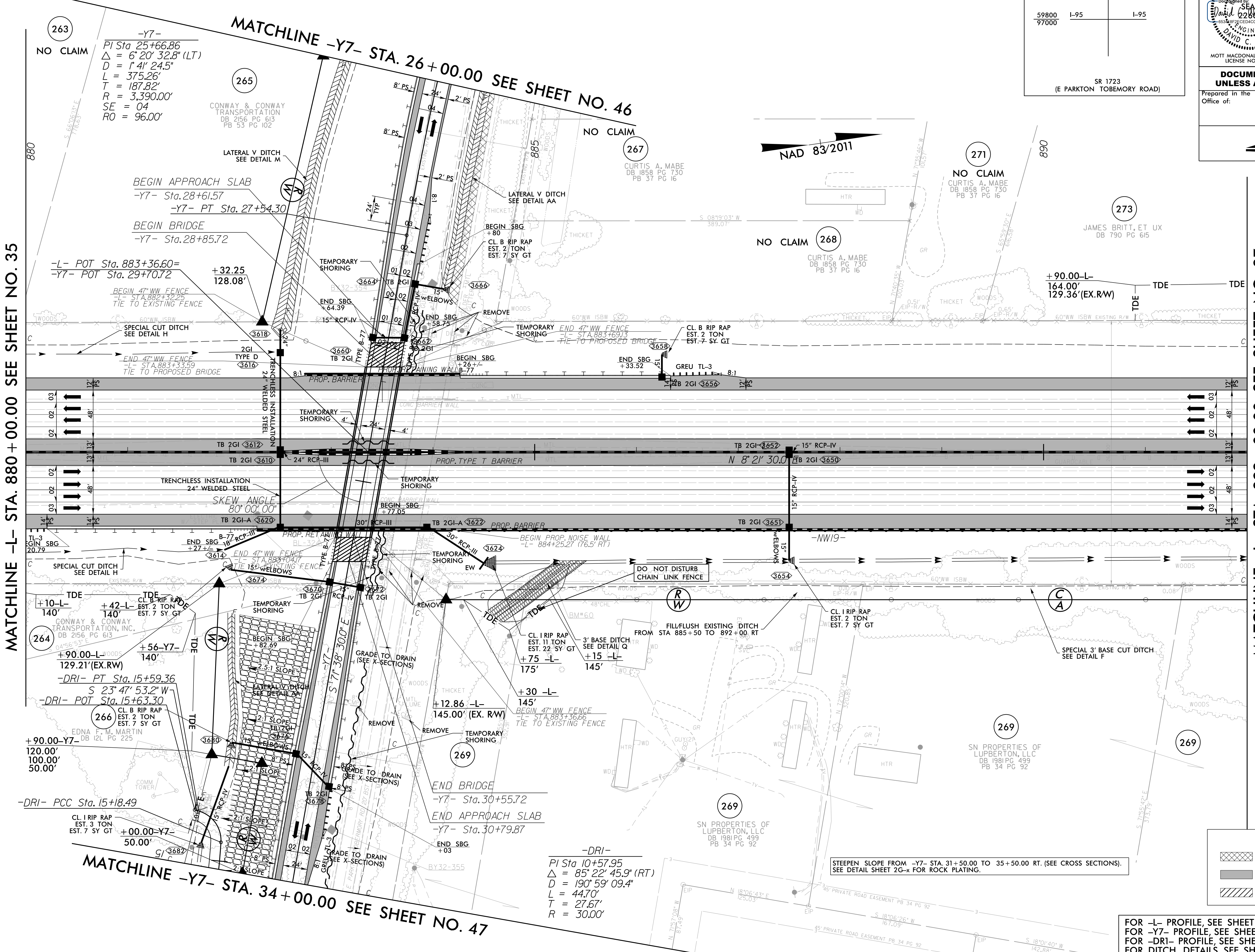
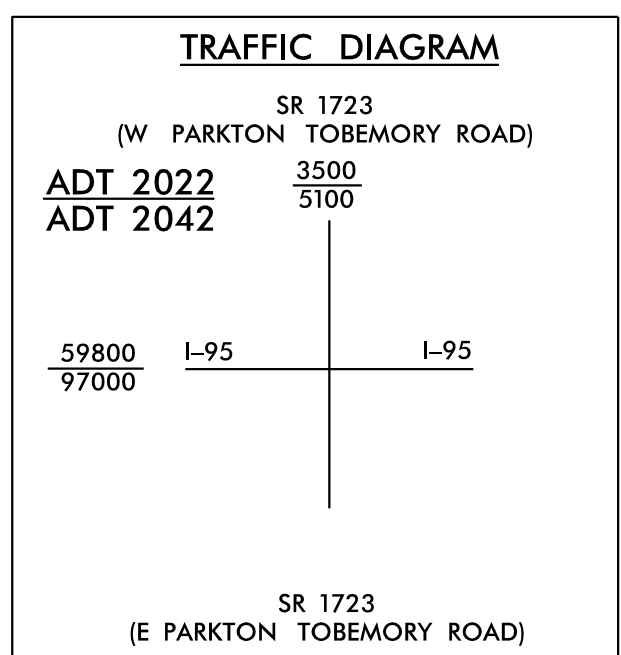


5/14/99
4/21/2022
R:\P\04\15987b_rdy_psh_36.dgn

PROJECT REFERENCE NO. 1-5987B	SHEET NO. 36
RW SHEET NO.	
ROADWAY DESIGN ENGINEER	HYDRAULICS ENGINEER
MOTT MACDONALD & E, LLC DB 1858 PG 730 PB 53 PG 102	
WETHERILL ENGINEERING, LLC LICENSE NO. F-0377	
DOCUMENT NOT CONSIDERED FINAL UNLESS ALL SIGNATURES COMPLETED	
Prepared in the Office of:	
M PO Box 700 MOTT MACDONALD Fuquay-Varina, NC 27526 www.mottmac.com	



LEGEND

- PROPOSED PAVEMENT REMOVAL
- PROPOSED PAVED SHOULDER
- PROPOSED APPROACH SLAB

FOR -L- PROFILE, SEE SHEET 81
FOR -Y7- PROFILE, SEE SHEET 96 & 97
FOR -DRI- PROFILE, SEE SHEET 97
FOR DITCH DETAILS, SEE SHEETS 2D-1 THRU 2D-3
FOR STRUCTURE PLANS, SEE SHEETS S10-1 THRU S10-33
FOR NOISE WALL PLANS, SEE SHEETS W19-1 THRU W19-4

STEEPEN SLOPE FROM -Y7- STA. 31+50.00 TO 35+50.00 RT. (SEE CROSS SECTIONS).
SEE DETAIL SHEET 2G-x FOR ROCK PLATING.