

5/14/2022

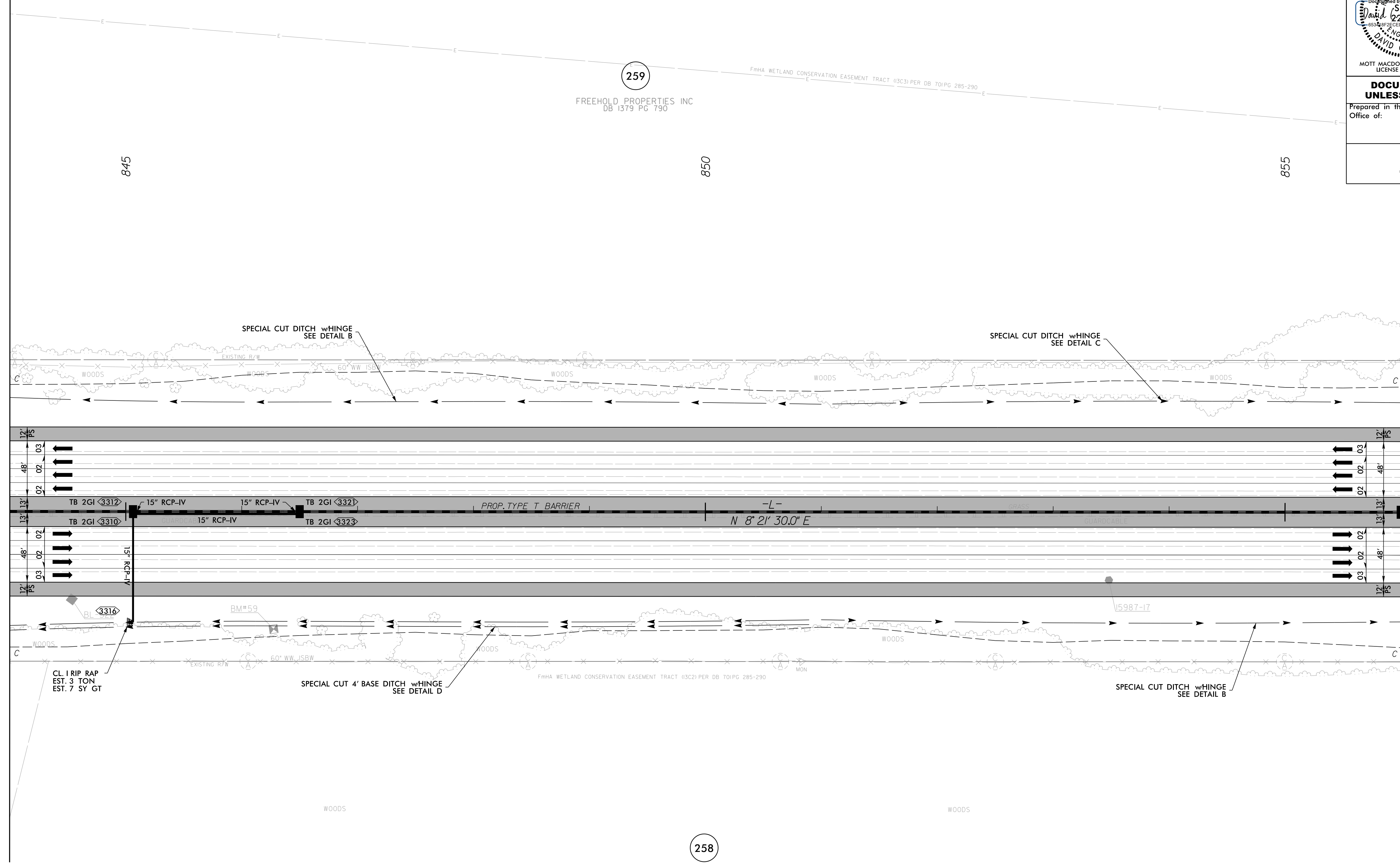
R:\P\2022\15987b_rdy_esh_33.dgn

NAD 83/2011

| | |
|--|--|
| PROJECT REFERENCE NO. 1-5987B | SHEET NO. 33 |
| RW SHEET NO. | |
| ROADWAY DESIGN ENGINEER | HYDRAULICS ENGINEER |
| | |
| MOTT MACDONALD I & E, LLC LICENSE NO. F-0669 | WETHERILL ENGINEERING, LLC LICENSE NO. F-0377 |
| DOCUMENT NOT CONSIDERED FINAL UNLESS ALL SIGNATURES COMPLETED | |
| Prepared in the Office of: | M MOTT MACDONALD PO Box 700 Fuquay-Varina, NC 27526 www.mottmac.com/america |
| | |
| 1223 Jones Franklin Rd. Raleigh, N.C. 27606 License No. F-0377 Bus: 919 851 8077 Fax: 919 851 8107 | |

MATCHLINE -L- STA. 844 + 00.00 SEE SHEET NO. 32

MATCHLINE -L- STA. 856 + 00.00 SEE SHEET NO. 34



258

JAMES BRITT & RUTH
DB 710 PG 196

LEGEND

PROPOSED PAVED SHOULDER

FOR -L- PROFILE, SEE SHEET 78
FOR DITCH DETAILS, SEE SHEETS 2D-1 THRU 2D-3