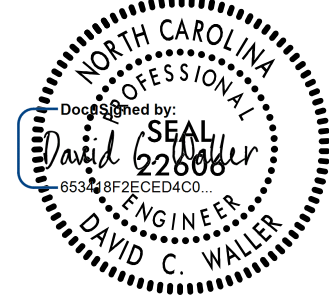
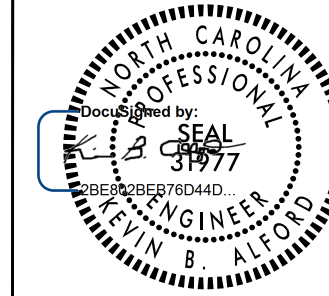


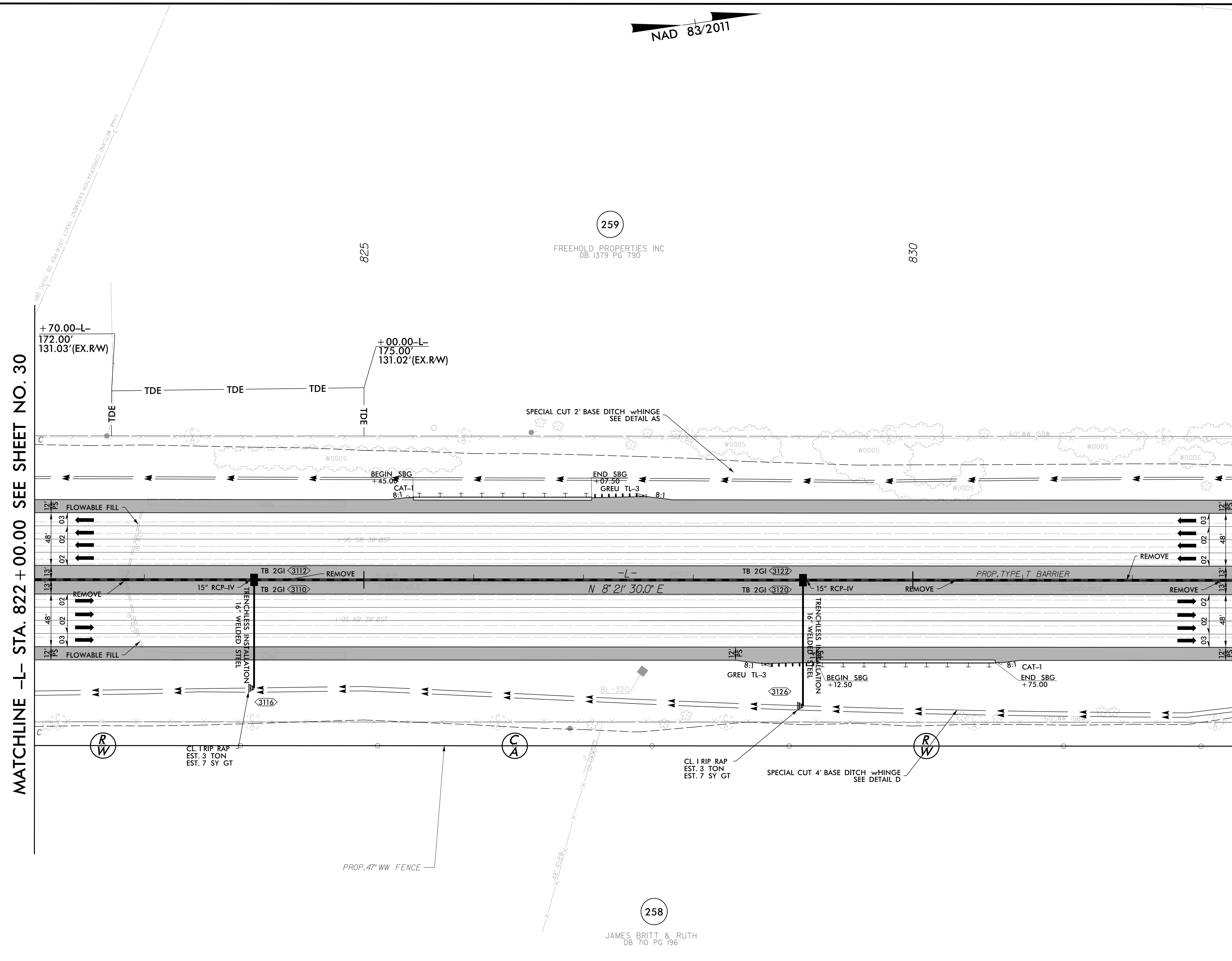


5/14/2022

R:\P\05\5987b\rdy\_psh\_31.dgn

NAD 83/2011

PROJECT REFERENCE NO. 1-5987B		SHEET NO. 31	
RW SHEET NO.			
ROADWAY DESIGN ENGINEER		HYDRAULICS ENGINEER	
			
MOTT MACDONALD I & E, LLC LICENSE NO. F-0669		WETHERILL ENGINEERING, LLC LICENSE NO. F-0377	
<b>DOCUMENT NOT CONSIDERED FINAL UNLESS ALL SIGNATURES COMPLETED</b>			
Prepared in the Office of:			
			



MATCHLINE -L- STA. 822 + 00.00 SEE SHEET NO. 30

MATCHLINE -L- STA. 833 + 00.00 SEE SHEET NO. 32

**LEGEND**

 PROPOSED PAVED SHOULDER

FOR -L- PROFILE, SEE SHEET 76  
FOR DITCH DETAILS, SEE SHEETS 2D-1 THRU 2D-3

259

FREEHOLD PROPERTIES INC  
DB 1379 PG 790

258

JAMES BRITT & RUTH  
DB 710 PG 196