

5/14/99

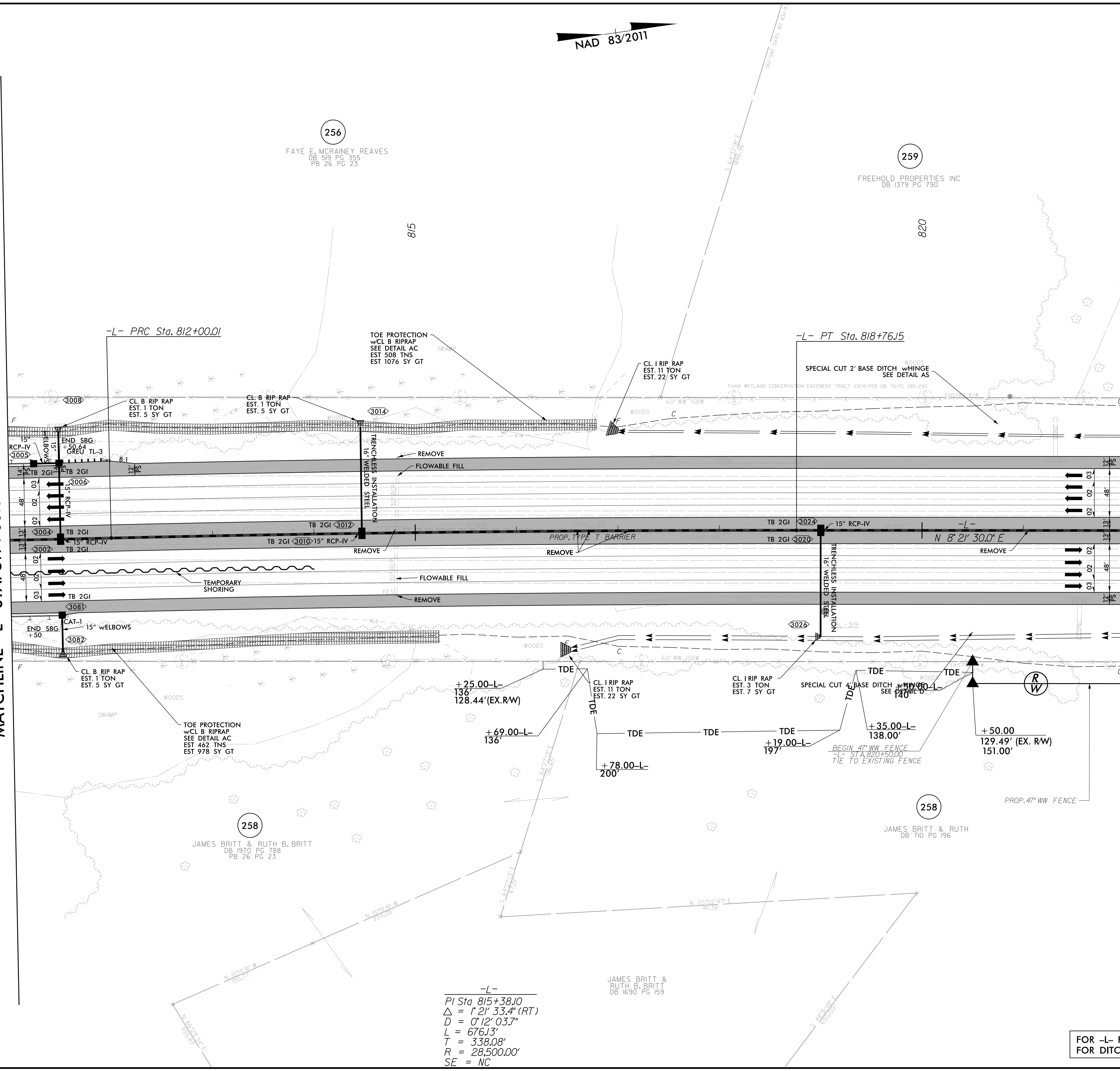
R:\P\02\2022\02\15987b_rdy_psh_30.dgn
1/21/2022
15:58:14

NAD 83/2011

PROJECT REFERENCE NO. 1-5987B		SHEET NO. 30	
RW SHEET NO.			
ROADWAY DESIGN ENGINEER DAVID C. WALKER NORTH CAROLINA PROFESSIONAL ENGINEER SEAL 22888 LICENSE NO. F-0669		HYDRAULICS ENGINEER WETHERILL ENGINEERING, LLC NORTH CAROLINA PROFESSIONAL ENGINEER SEAL 31977 LICENSE NO. F-0377	
DOCUMENT NOT CONSIDERED FINAL UNLESS ALL SIGNATURES COMPLETED			
Prepared in the Office of:		M MOTT MACDONALD & E, LLC Fuquay-Varina, NC 27526 www.mottmac.com/americas	
		1223 Jones Franklin Rd. Raleigh, N.C. 27606 License No. F-0377 Bus: 919 851 8077 Fax: 919 851 8107	

MATCHLINE -L- STA. 811 + 00.00 SEE SHEET NO. 29

MATCHLINE -L- STA. 822 + 00.00 SEE SHEET NO. 31



-L-
 PI Sta 815+38.10
 $\Delta = 1^{\circ} 21' 33.4''$ (RT)
 $D = 0^{\circ} 12' 03.7''$
 $L = 676.13'$
 $T = 338.08'$
 $R = 28,500.00'$
 $SE = NC$

LEGEND

■ PROPOSED PAVED SHOULDER

FOR -L- PROFILE, SEE SHEET 75
 FOR DITCH DETAILS, SEE SHEETS 2D-1 THRU 2D-3