

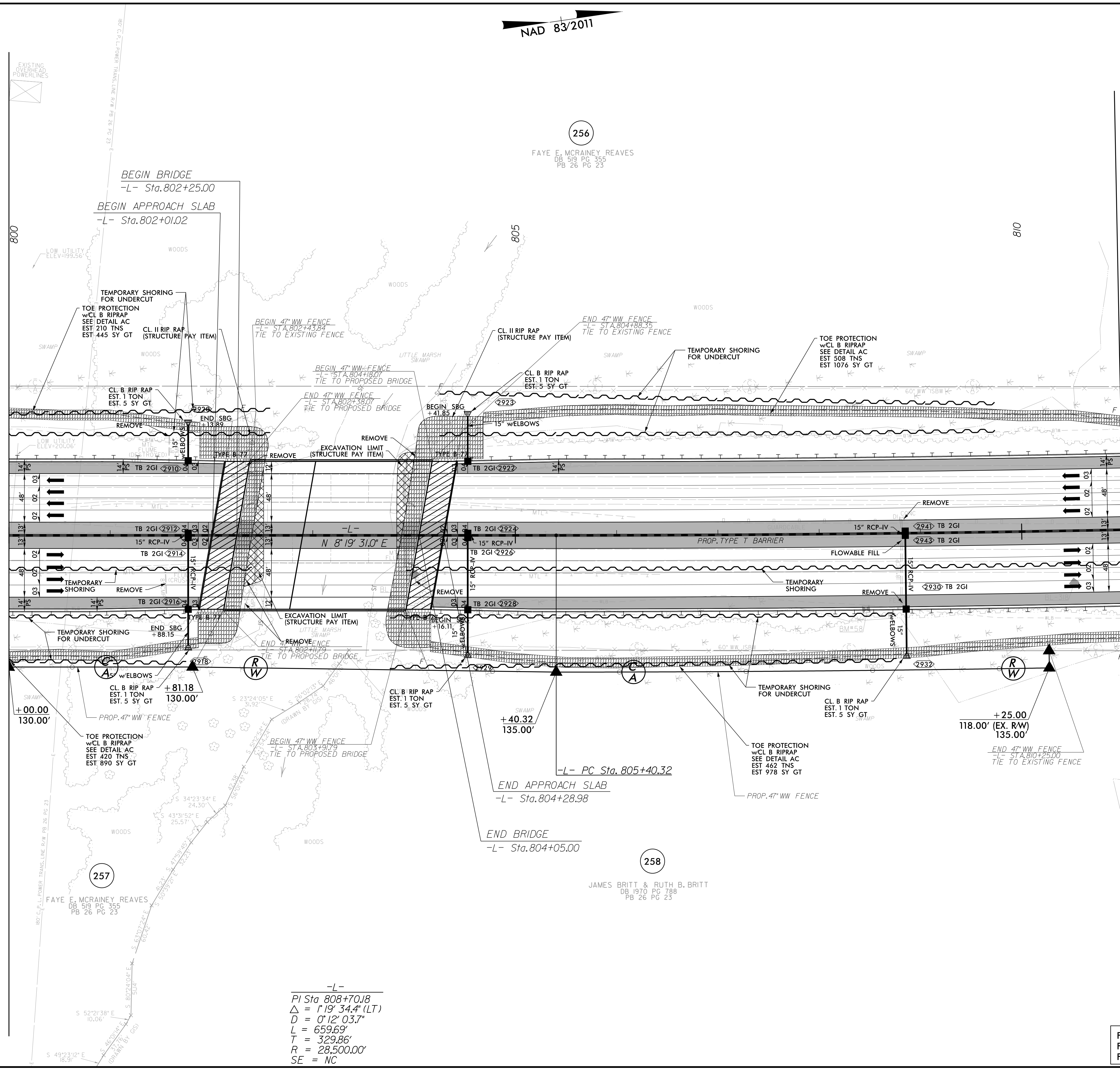
5/14/99
 4/21/2022
 R:\P\04\15987b_rdy_psh_29.dgn

NAD 83/2011

PROJECT REFERENCE NO. 1-5987B	SHEET NO. 29
RW SHEET NO.	
ROADWAY DESIGN ENGINEER DAVID C. WALKER NORTH CAROLINA PROFESSIONAL ENGINEER SEAL 22888 LICENSE NO. F-0669	HYDRAULICS ENGINEER WETHERILL ENGINEERING, LLC NORTH CAROLINA PROFESSIONAL ENGINEER SEAL 31977 LICENSE NO. F-0377
DOCUMENT NOT CONSIDERED FINAL UNLESS ALL SIGNATURES COMPLETED	
Prepared in the Office of: MOTT MACDONALD & E, LLC 1223 Jones Franklin Rd. Fuquay-Varina, NC 27606 License No. F-0372 Bus: 919 851 8077 Fax: 919 851 8107	

MATCHLINE -L- STA. 800 + 00.00 SEE SHEET NO. 28

MATCHLINE -L- STA. 811 + 00.00 SEE SHEET NO. 30



-L-
 PI Sta 808+70.18
 $\Delta = 1' 19'' 34.4''$ (LT)
 $D = 0' 12'' 03.7''$
 $L = 659.69'$
 $T = 329.86'$
 $R = 28,500.00'$
 $SE = NC$

LEGEND

- PROPOSED PAVED SHOULDER
- PROPOSED APPROACH SLAB

FOR -L- PROFILE, SEE SHEET 74
 FOR DITCH DETAILS, SEE SHEETS 2D-1 THRU 2D-3
 FOR STRUCTURE PLANS, SEE SHEETS S9-1 THRU S9-69