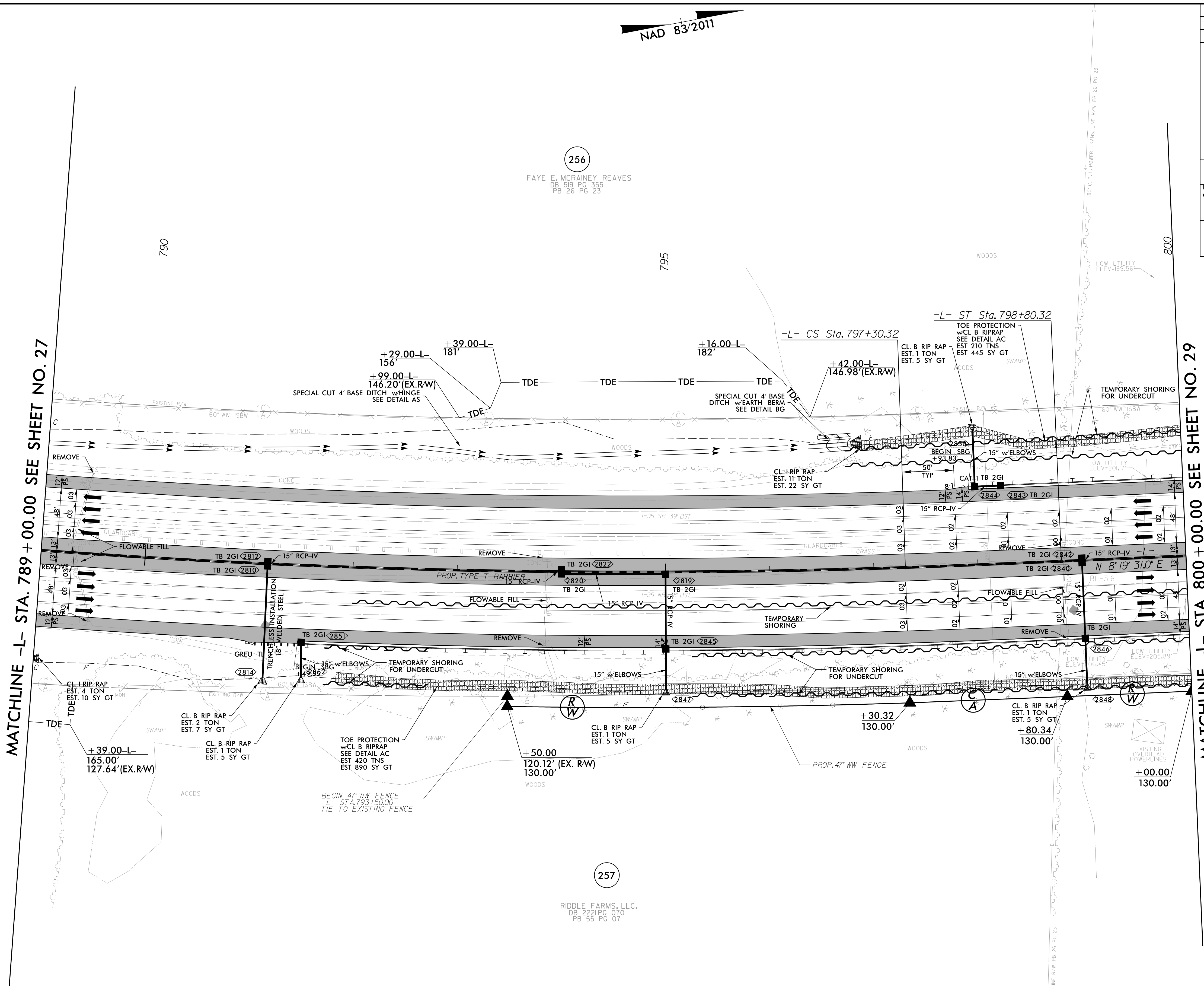


5/14/99

NAD 83/2011

PROJECT REFERENCE NO. 1-5987B	SHEET NO. 28
RW SHEET NO.	
ROADWAY DESIGN ENGINEER DAVID C. WALKER NORTH CAROLINA PROFESSIONAL ENGINEER SEAL 22888 LICENSE NO. 22888	HYDRAULICS ENGINEER WETHERILL ENGINEERING, LLC NORTH CAROLINA PROFESSIONAL ENGINEER SEAL 31977 LICENSE NO. 31977
DOCUMENT NOT CONSIDERED FINAL UNLESS ALL SIGNATURES COMPLETED	
Prepared in the Office of:	
MOTT MACDONALD & E, LLC LICENSE NO. F-0669	MOTT MACDONALD Fuquay-Varina, NC 27526 www.mottmac.com/americas
WETHERILL ENGINEERING 1223 Jones Franklin Rd. Raleigh, N.C. 27606 License No. F-0337 Bus: 919 851 8077 Fax: 919 851 8107	



MATCHLINE -L- STA. 789 + 00.00 SEE SHEET NO. 27

MATCHLINE -L- STA. 800 + 00.00 SEE SHEET NO. 29

-L-

PI Sta 788+81.45	PIs Sta 797+80.32
$\Delta = 12' 33" 12.3" (LT)$	$\Theta_s = 0' 33" 08.4"$
$D = 0' 44" 11.2"$	$L_s = 150.00'$
$L = 1704.58'$	$LT = 100.00'$
$T = 855.72'$	$ST = 50.00'$
$R = 7780.00'$	
$SE = 03$	
$RO = 150.00'$	

LEGEND

■ PROPOSED PAVED SHOULDER

FOR -L- PROFILE, SEE SHEET 73
FOR DITCH DETAILS, SEE SHEETS 2D-1 THRU 2D-3

4/21/2022
R:\P\09\15987b_rdy_psh_28.dgn
WAL