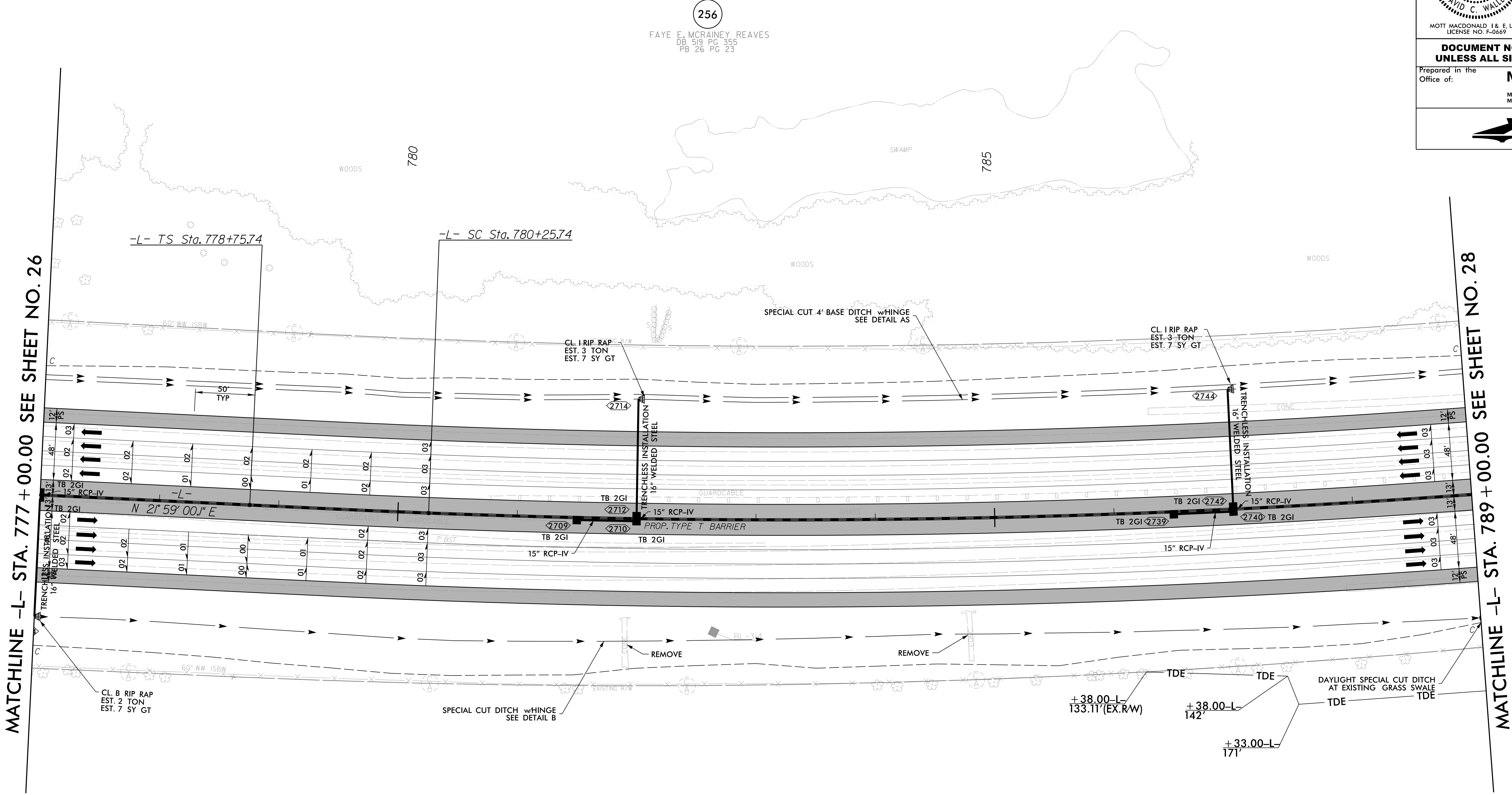


5/14/99

4/21/2022
R:\Projects\15987b_rdy_psh_27.dgn



PROJECT REFERENCE NO. 1-5987B		SHEET NO. 27	
RW SHEET NO.			
ROADWAY DESIGN ENGINEER		HYDRAULICS ENGINEER	
MOTT MACDONALD I & E, LLC LICENSE NO. F-0669		WETHERILL ENGINEERING, LLC. LICENSE NO. F-0377	
DOCUMENT NOT CONSIDERED FINAL UNLESS ALL SIGNATURES COMPLETED			
Prepared in the Office of:			



-L-

PIs Sta 779+75.74	PI Sta 788+81.45
Os = 0° 33' 08.4"	Δ = 12° 33' 12.3" (LT)
Ls = 150.00'	D = 0' 44' 11.2"
LT = 100.00'	L = 1,704.58'
ST = 50.00'	T = 855.72'
	R = 7,780.00'
	SE = 03
	RO = 150.00'

LEGEND

PROPOSED PAVED SHOULDER

FOR -L- PROFILE, SEE SHEET 72
FOR DITCH DETAILS, SEE SHEETS 2D-1 THRU 2D-3

(256)
FAYE E. MCRAINEY REAVES
DB 519 PG 355
PB 26 PG 23

(257)
RIDDLE FARMS, LLC.
DB 222 PG 010
PB 55 PG 07