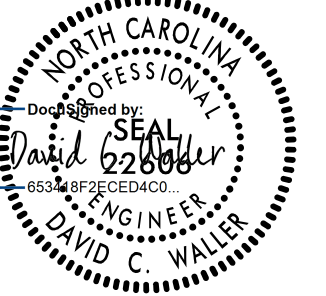
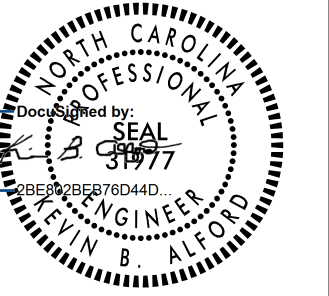


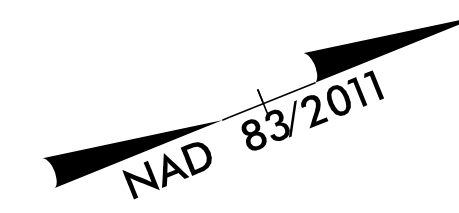


5/14/99

PROJECT REFERENCE NO. 1-5987B		SHEET NO. 26	
RW SHEET NO.			
ROADWAY DESIGN ENGINEER		HYDRAULICS ENGINEER	
			
MOTT MACDONALD I & E, LLC LICENSE NO. F-0669		WETHERILL ENGINEERING, LLC LICENSE NO. F-0377	
DOCUMENT NOT CONSIDERED FINAL UNLESS ALL SIGNATURES COMPLETED			
Prepared in the Office of:			
			



256

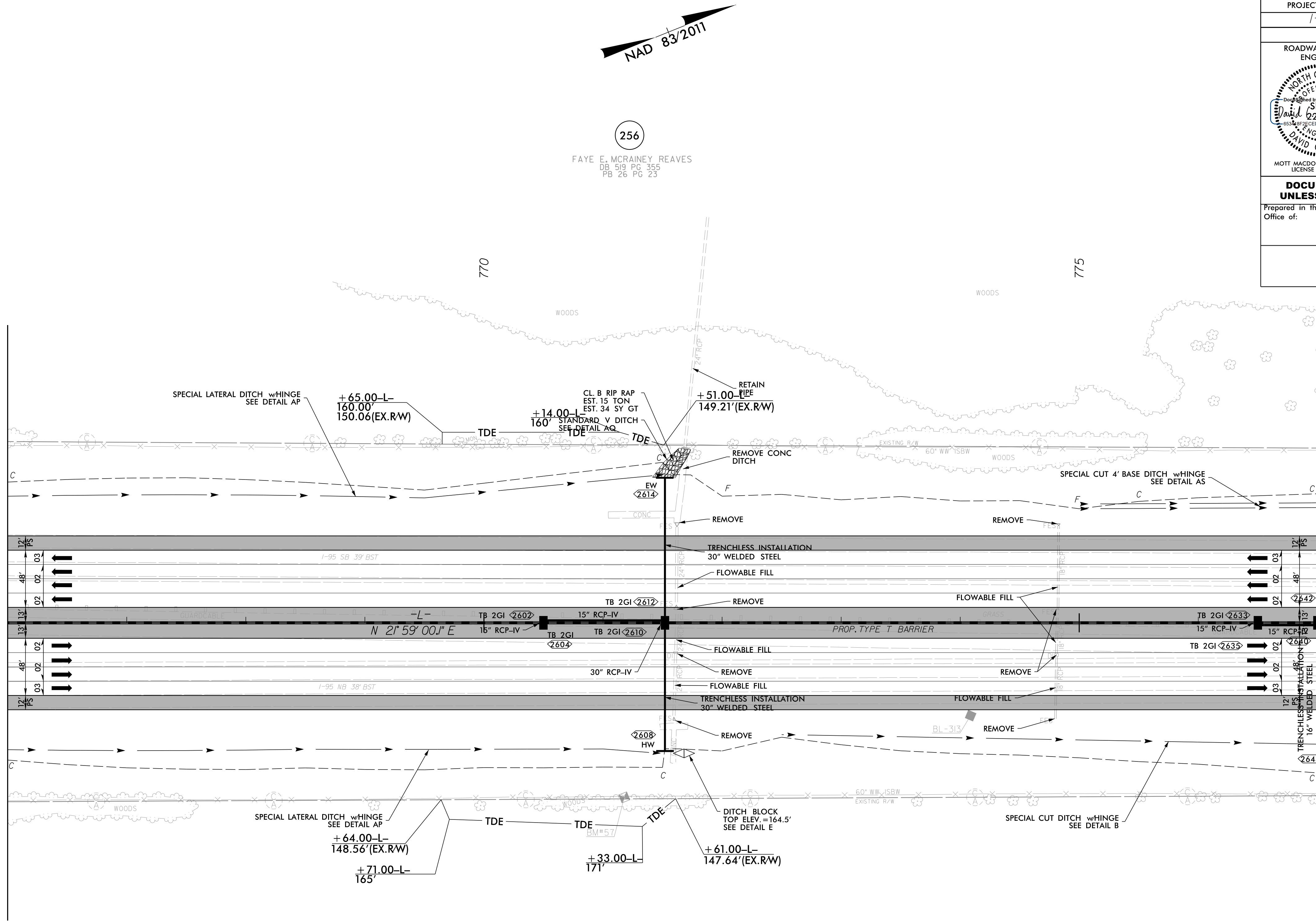
FAYE E. MCRAINEY REAVES
DB 519 PG 355
PB 26 PG 23

257

RIDDLE FARMS, LLC.
DB 2221 PG 070
PB 55 PG 07

MATCHLINE -L- STA. 766 + 00.00 SEE SHEET NO. 25

MATCHLINE -L- STA. 777 + 00.00 SEE SHEET NO. 27



LEGEND

 PROPOSED PAVED SHOULDER

FOR -L- PROFILE, SEE SHEET 71
FOR DITCH DETAILS, SEE SHEETS 2D-1 THRU 2D-3

R:\P\04\15987b_rdy_psh_26.dgn
4/21/2022
10:58:14